

**DESCRIPTION**

Solenoid valve 2 way normally closed  
direct acting poppet type

**CONSTRUCTION**

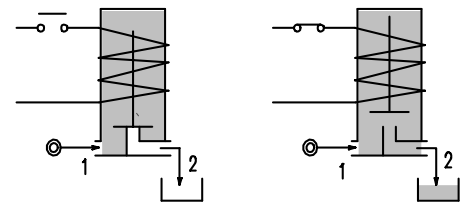
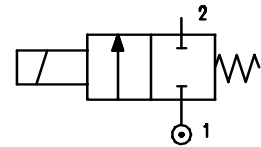
Body	Brass
Armature tube	Brass
Plunger and core	Stainless steel
Springs	Stainless steel
Seal material	NBR FPM



**2**

**FEATURES**

Maximum allowable pressure 30 bar  
 Maximum fluid viscosity 25cSt (mm<sup>2</sup>/s)  
 Ambient temperature : with class F coil -10°C +55°C  
 with class H coil -10°C +80°C  
 Universal mounting position



**OPTIONS :** Electroless nickel plating

CODE ① ②	Connection	Orifice mm	KV m <sup>3</sup> /h	Differential pressure bar			Nominal power			Coil		Seal ①	Temp. Range °C
				Min	Max		AC Inrush	VA Holding	DC Watt	Series	Width		
					AC	DC							
D121L.....10///.....	M5	1	0.03	0	-	10	-	-	2	6	16	NBR=B	-10 +90
D121L.....12///.....	M5	1.2	0.037	0	-	7	-	-	2	6	16		
D121L.....12///.....	M5	1.2	0.037	0	-	12	-	-	4	6	16		
D121L.....16///.....	M5	1.6	0.055	0	-	3	-	-	2	6	16	FPM=V	-10 +130
D121L.....16///.....	M5	1.6	0.055	0	-	8	-	-	4	6	16		
D121L.....20///.....	M5	2	0.082	0	-	1.4	-	-	2	6	16		
D121L.....20///.....	M5	2	0.082	0	-	4	-	-	4	6	16		

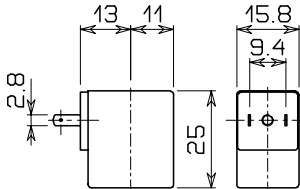
- ① Seal
- ② Coil

Example: D121LV12///60112 FPM seal  
Coil 24V DC 2W

COIL	Direct Current				Electrical connection	Connectors
	12V		24V			
	2W	4W	2W	4W		
Series 6 Width 16 Code ②	60012	60014	60112	60114	AMP 2.8X0.5	PG7 10348040

**DESCRIPTION**  
 Class F insulation  
 Voltage tolerance  $\pm 5\%$   
 Protection class  
 IP65 with connector fitted  
 IP00 without connector  
 Continuous service ED100%

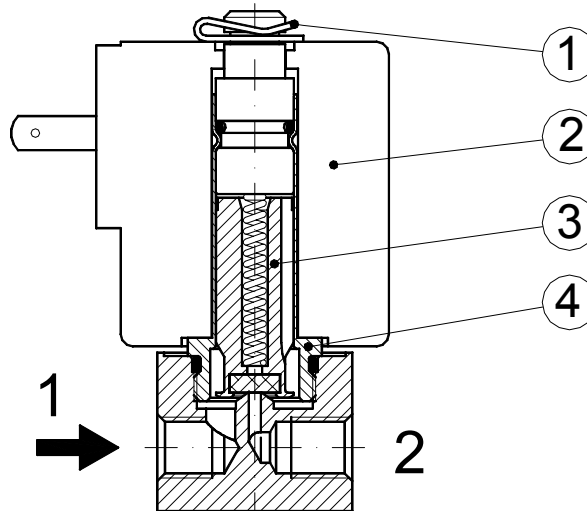
**OPTIONS**  
 Cable attached  
 Special coil voltages  
 Special coil powers



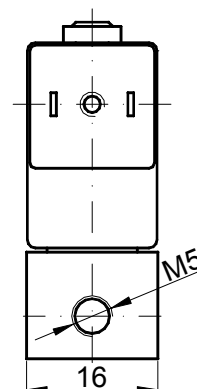
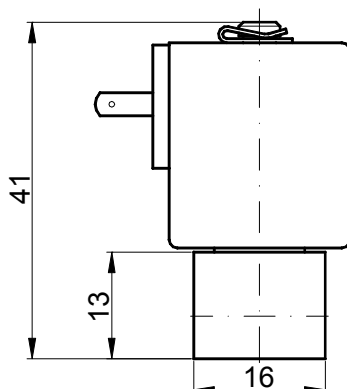
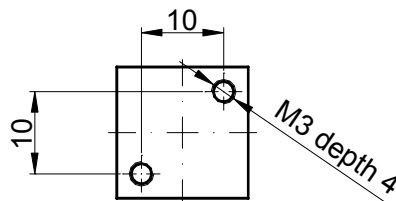
Series 6 Weight 0.02Kg

### SPARE PARTS LIST

1. Coil fixing nut
2. Coil
3. Plunger
4. Armature tube with core



### OVERALL DIMENSION



Weight = 0.05 Kg

### DESCRIPTION

Solenoid valve 2 way normally closed direct acting poppet type, suitable for food application and all compatible fluids.

### CONSTRUCTION

Body	Thermoplastic polymer: NSF, WRC, KTW, FDA certified
Armature tube	Brass chemically nickel plated
Plunger and core	Stainless steel
Springs	Stainless steel
Seal material	NBR food contact certified FPM food contact certified EPDM food contact certified

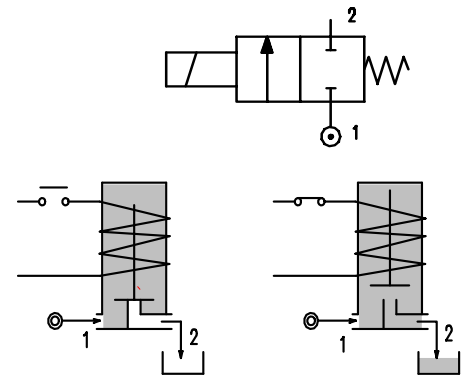


2

### FEATURES

Maximum allowable pressure 30 bar \*  
 Maximum fluid viscosity 25cSt (mm<sup>2</sup>/s)  
 Ambient temperature : with class F coil -10°C +55°C  
 with class H coil -10°C +80°C  
 Universal mounting position

**OPTIONS :** Stainless steel armature tube  
 Type N connection without nut



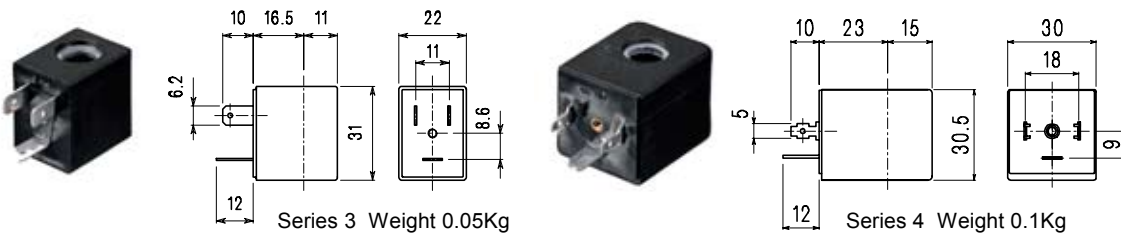
CONNECTIONS					
K	N	P	W ③	Y	Z
<b>SPIGGOT</b>	<b>G1/8" male thread</b> with <b>NUT</b> for flexible and semiflexible pipes	<b>HOSETAIL</b> for flexible pipes	<b>COMPRESSION</b> for flexible and semiflexible pipes	<b>PUSH IN</b> for semiflexible pipes Øext.6	<b>PUSH IN</b> for semiflexible pipes Øext.4

CODE ① ②	Connection *	Orifice mm	KV m <sup>3</sup> /h	Differential pressure bar			Nominal power			Coil		Seal ①	Temp. range °C
				Min	Max		AC Inrush	VA Holding	DC Watt	Series	Width		
					AC	DC							
E135*.....15///.....	K-N-P-W-Y-Z	1.5	0.06	0	16	16	12	8	6.5	3	22	NBR=A	-10 +90
E135*.....20///.....	K-N-P-W-Y-Z	2	0.09	0	12	10	12	8	6.5	3	22		
E135*.....25///.....	K-N-P-W-Y-Z	2.5	0.14	0	8	5.5	12	8	6.5	3	22		
E135*.....30///.....	K-N-P-Y	3	0.19	0	4.5	2	12	8	6.5	3	22	EPDM=E	<+140
E135*.....40///.....	N-P-Y	4	0.35	0	2.5	1.2	12	8	6.5	3	22		
E135*.....20///.....	K-N-P-W-Y-Z	2	0.09	0	25	15	15	11	5	4	30	FPM=V	-10 +130
E135*.....25///.....	K-N-P-W-Y-Z	2.5	0.14	0	16	8	15	11	5	4	30		
E135*.....30///.....	K-N-P-Y	3	0.19	0	8	4	15	11	5	4	30		
E135*.....40///.....	N-P-Y	4	0.35	0	5	2.5	15	11	5	4	30		

① Seal Example: E135KA20///30B NBR seal SPIGGOT connection  
 ② Coil Coil 24V 50/60Hz  
 ③ Only for connection "W" E135W..../1/....

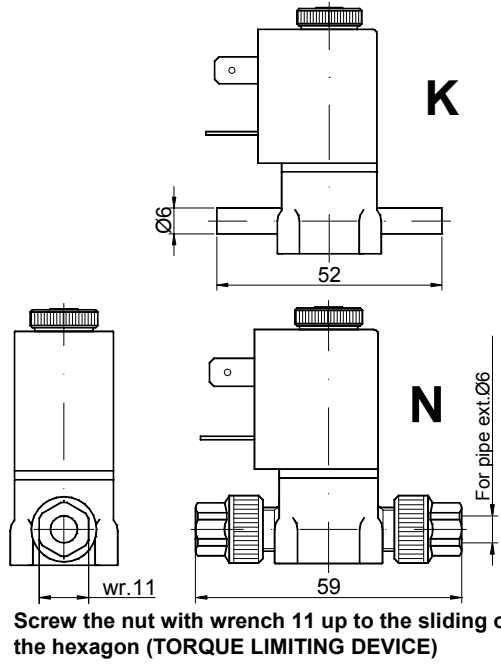
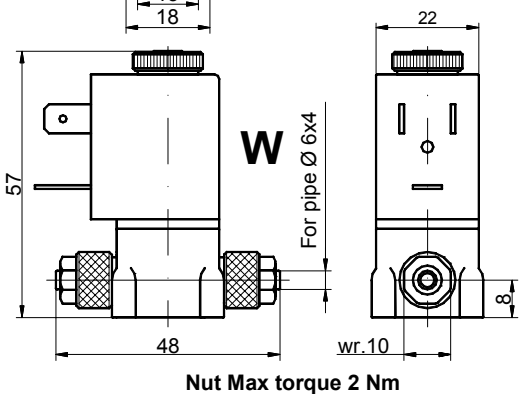
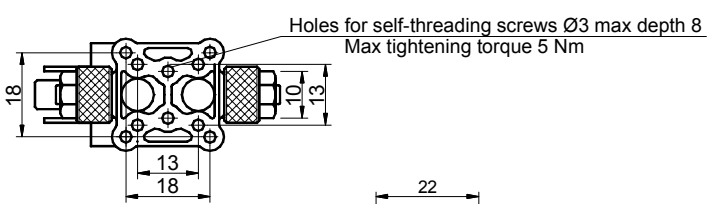
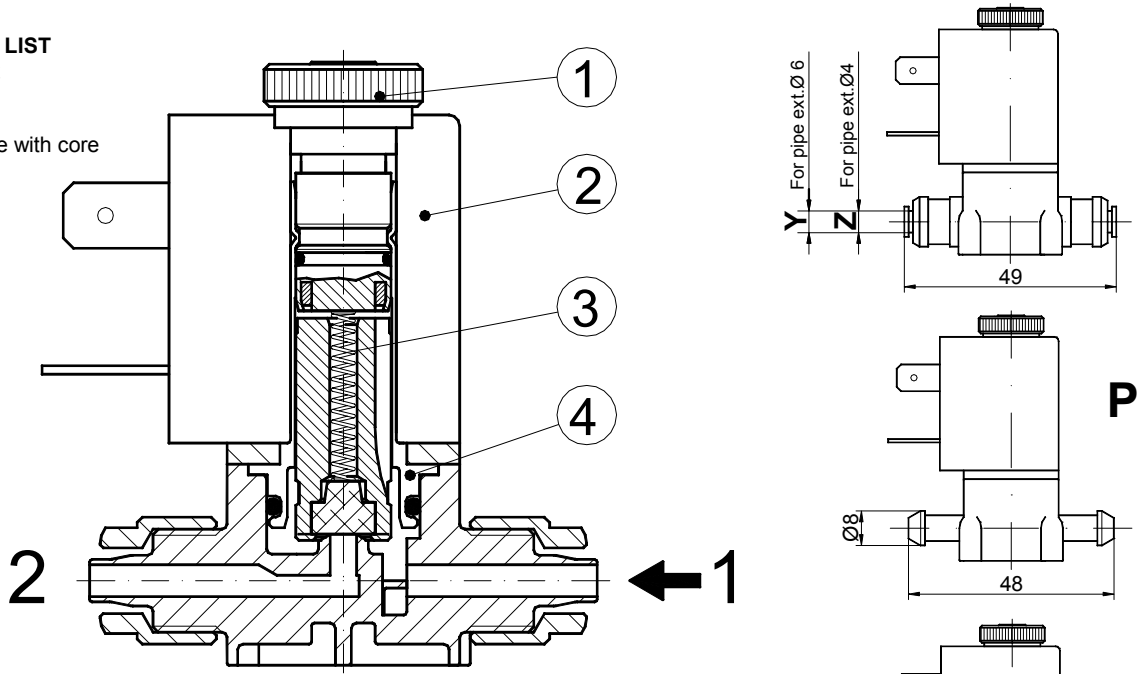
\* REMARK: The maximum allowable pressure PS for steam is 2,5bar (gauge pressure)

COILS	Alternating Current ~50/60Hz Volt							Direct Current Volt			Electrical connection	Connectors	DESCRIPTION Class F insulation Voltage tolerance AC +15% -10% DC ± 10% Protection class IP65 with connector fitted IP00 without connector Continuous service ED100%
	12	24	48	110	220 230	240	380	12	24	48			
Series 3 Width 22 Code ②	30A	30B	30C	30D	30E	30F	30G	300	301	302	DIN 46244	PG9 code 10348000	OPTIONS Class H insulation Cable attached Special coil voltages Special coil powers
Series 4 Width 30 Code ②	40A	40B	40C	40D	40E	40F	40G	400	401	402	DIN 43650A	PG9 code 10349000	



### SPARE PARTS LIST

1. Coil fixing nut
2. Coil
3. Plunger
4. Armature tube with core



Weight with coil series 3 = 0.10 Kg  
Weight with coil series 4 = 0.15 Kg

### DESCRIPTION

Solenoid valve 2 way normally closed  
direct acting with dry armature.  
No metal parts in contact with the media.

### CONSTRUCTION

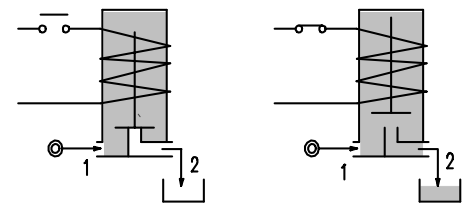
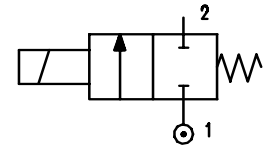
Body	Acetal copolymer
Armature tube	Brass
Plunger and core	Stainless steel
Springs	Stainless steel
Seal material	Silicone



2

### FEATURES

Maximum allowable pressure 2 bar  
Maximum fluid viscosity 25cSt (mm<sup>2</sup>/s)  
Ambient temperature : with class F coil -10°C +55°C  
with class H coil -10°C +80°C  
Preferred mounting position with vertical coil above.



### Versions with closed vent

CODE ②	Connection G ISO 228	Orifice mm	KV m <sup>3</sup> /h	Differential pressure bar			Nominal power			Coil		Seal	Temp. range °C
				Min	Max		AC Inrush	VA Holding	DC Watt	Series	Width		
					AC	DC							
E150PS75///.....	-	7.5	0.7	0	0.2	0.2	12	8	6.5	3	22	SILICONE=S	< +95
E150PS75/6/.....	1/4"	7.5	0.7	0	0.2	0.2	12	8	6.5	3	22		
D150PS75///.....	-	7.5	0.7	0	-	0.2	12	8	6.5	3	22		
D150PS75/5/.....	1/4"	7.5	0.7	0	-	0.2	12	8	6.5	3	22		

### Versions with open vent

CODE ②	Connection G ISO 228	Orifice mm	KV m <sup>3</sup> /h	Differential pressure bar			Nominal power			Coil		Seal	Temp. range °C
				Min	Max		AC Inrush	VA Holding	DC Watt	Series	Width		
					AC	DC							
E150PS75/7/.....	-	7.5	0.7	0	0.2	0.2	12	8	6.5	3	22	SILICONE=S	< +95
E150PS75/1/.....	1/4"	7.5	0.7	0	0.2	0.2	12	8	6.5	3	22		
D150PS75/4/.....	-	7.5	0.7	0	-	0.2	12	8	6.5	3	22		
D150PS75/3/.....	1/4"	7.5	0.7	0	-	0.2	12	8	6.5	3	22		

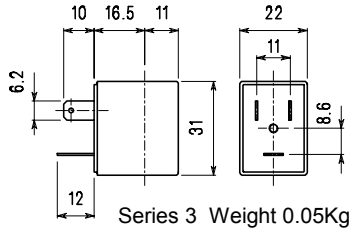
② Coil

Example: E150PS75///30E Fixing by flange – Closed vent  
Coil 220V 50/60Hz

COILS	Alternating Current ~50/60Hz Volt							Direct Current Volt			Electrical Connection	Connectors
	12	24	48	110	220 230	240	380	12	24	48		
Series 3 Width 22 Code ②	30A	30B	30C	30D	30E	30F	30G	300	301	302	DIN 46244	PG9 code 10348000

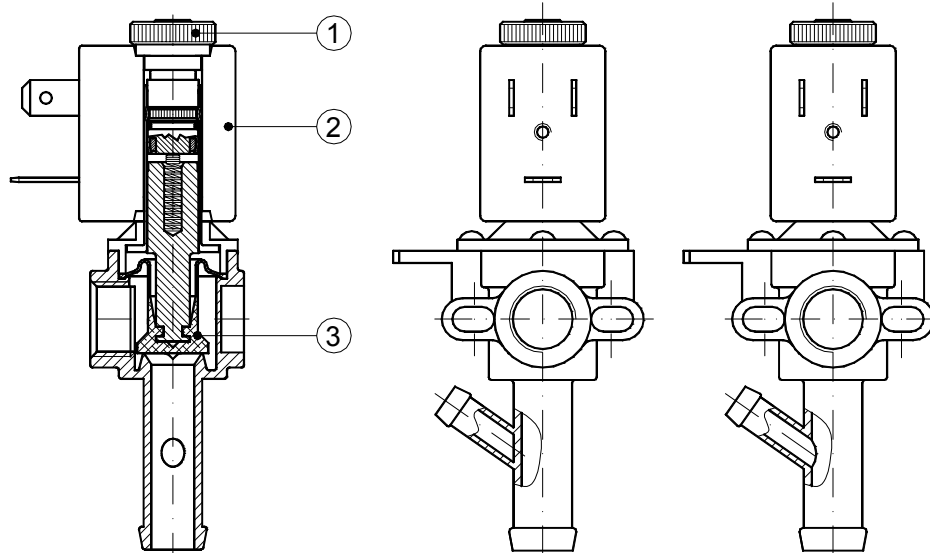
**DESCRIPTION**  
 Class F insulation  
 Voltage tolerance  
 AC +15% -10%  
 DC ± 10%  
 Protection class  
 IP65 with connector fitted  
 IP00 without connector  
 Continuous service ED100%

**OPTIONS**  
 Class H insulation  
 Cable attached  
 Special coil voltages  
 Special coil powers



### SPARE PARTS LIST

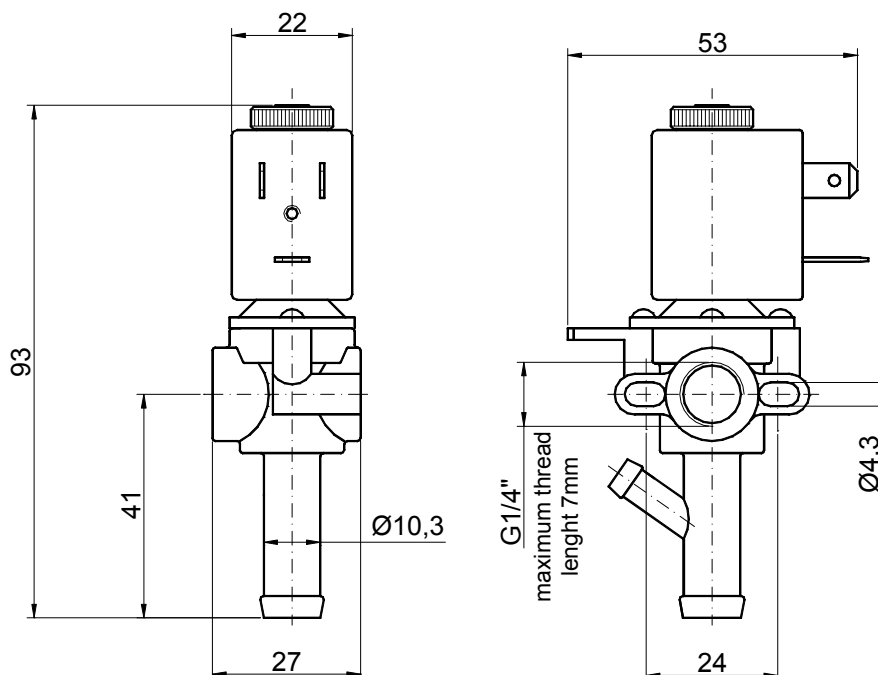
1. Coil fixing nut
2. Coil
3. Diaphragm



Version with closed vent

Version with open vent

### OVERALL DIMENSION



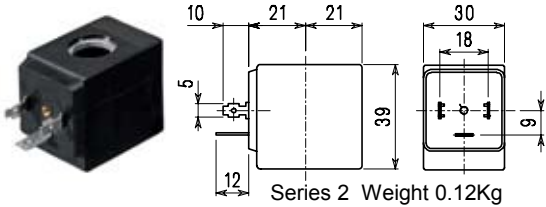
Weight = 0.1 Kg



COILS	Alternating Current ~50/60Hz Volt							Direct Current Volt			Electrical connection	Connectors
	12	24	48	110	220 230	240	380	12	24	48		
Series 2 Width 30 Code ②	20A	20B	20C	20D	20E	20F	20G	200	201	202	DIN 43650A	PG9 code 10349000

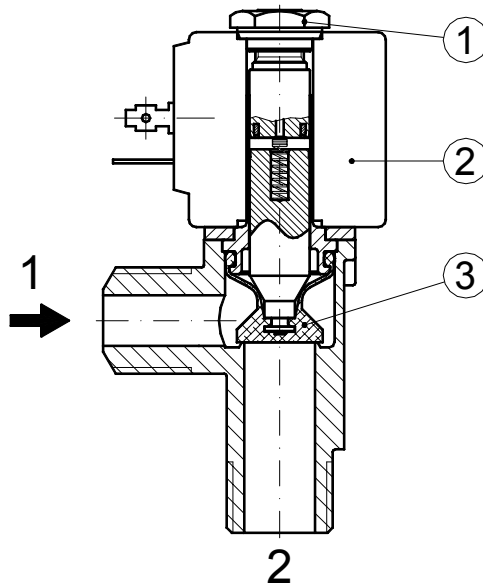
**DESCRIPTION**  
 Class F insulation  
 Voltage tolerance  
 AC +15% -10%  
 DC ± 10%  
 Protection class  
 IP65 with connector fitted  
 IP00 without connector  
 Continuous service ED100%

**OPTIONS**  
 Class H insulation  
 Cable attached  
 Special coil voltages  
 Special coil powers



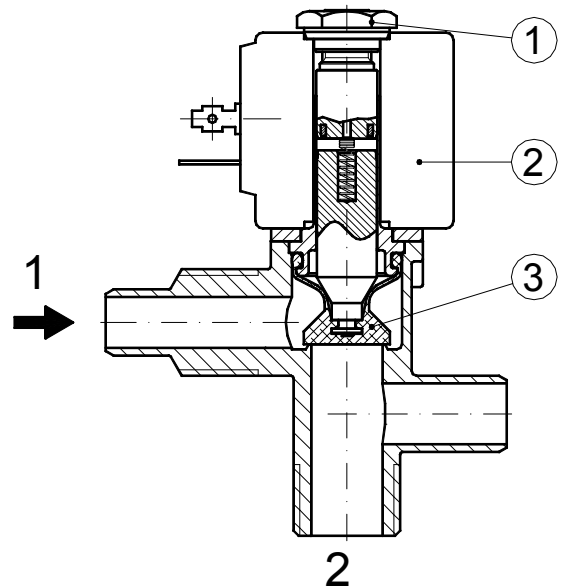
### SPARE PARTS LIST

1. Coil fixing nut
2. Coil
3. Diaphragm



**E160SS10/2/...**

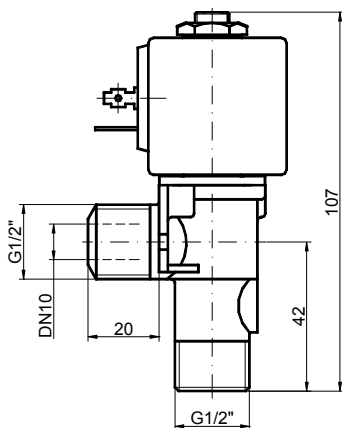
Version with closed vent



**E160SS10/3/...**

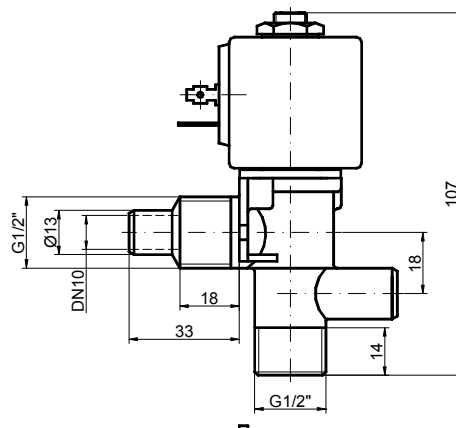
Version with open vent

### OVERALL DIMENSION



**E160SS10/2/...**

Weight 0.22 Kg



**E160SS10/3/...**

Weight 0.24 Kg



## DESCRIPTION

Solenoid valve 2 way normally closed  
 direct acting with dry armature and  
 hosetails for flexible pipes.  
 No metal parts in contact with the media.

## CONSTRUCTION

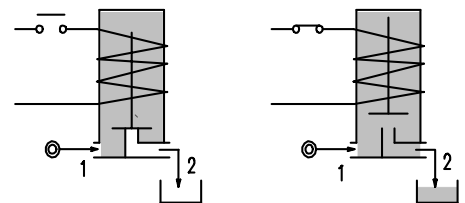
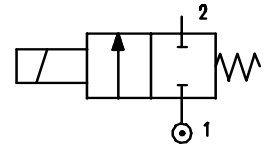
Body	Acetal copolymer
Armature tube	Stainless steel
Plunger and core	Stainless steel
Springs	Stainless steel
Seal material	Silicone



2

## FEATURES

Maximum allowable pressure 2 bar  
 Maximum fluid viscosity 25cSt (mm<sup>2</sup>/s)  
 Ambient temperature : with class F coil -10° +55°C  
 with class H coil -10° +80°C  
 Mounting position with vertical coil above



CODE ②	Connection mm	KV m³/h	Differential pressure bar			Nominal power			Coil		Seal	Temp. range °C
			Min	Max		AC Inrush	VA Holding	DC Watt	Series	Width		
				AC	DC							
E161PS8///.....	8	1.1	0	0.15	0.15	20	15	10	2	30	SILICONE=S	< +95
E161PS8/1/.....	8	1.1	0	0.5	0.5	40	30	27	5	36		

## For use with VACUUM – feeds from 2 to 1

CODE ②	Connection mm	KV m³/h	Differential pressure bar			Nominal power			Coil		Seal	Temp. range °C
			Min	Max		AC Inrush	VA Holding	DC Watt	Series	Width		
				AC	DC							
E161PS8/V/.....	8	1.1	0	-0.9	-0.7	20	15	10	2	30	SILICONE=S	< +95
E161PS8/V/.....	8	1.1	0	-0.9	-0.9	40	30	27	5	36		

② Coil

Example: E161PS8///20E  
 Coil 220V 50/60Hz



**DESCRIPTION**

Solenoid valve in-line 2 way normally open direct acting poppet type

**CONSTRUCTION**

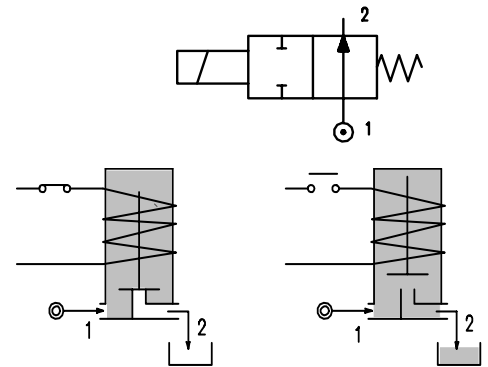
Body	Brass
Armature tube	Stainless steel
Plunger and core	Stainless steel
Springs	Stainless steel
Seal material	NBR
	FPM
	EPDM



**2**

**FEATURES**

Maximum allowable pressure 50 bar  
 Maximum fluid viscosity 25cSt (mm<sup>2</sup>/s)  
 Ambient temperature : with class F coil -10°C +55°C  
 with class H coil -10°C +80°C  
 Universal mounting position



**OPTIONS :** Electroless nickel plating

CODE ① ②	Connection G ISO 228	Orifice mm	KV m <sup>3</sup> /h	Differential pressure bar			Nominal power			Coil		Seal ①	Temp. range °C
				Min	Max		AC Inrush	VA Holding	DC Watt	Series	Width		
					AC	DC							
E203A.....20///.....	1/8"	2	0.1	0	16	16	20	15	10	2	30	NBR=B	-10 +90
E203A.....25///.....	1/8"	2.5	0.14	0	13	13	20	15	10	2	30	EPDM=E	<+140
E203A.....29///.....	1/8"	2.9	0.17	0	10	10	20	15	10	2	30	FPM=V	-10 +130

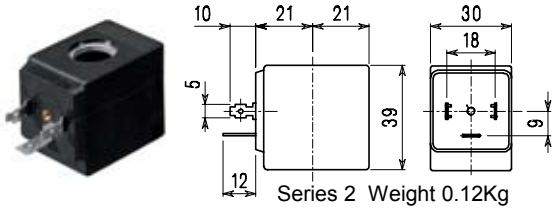
- ① Seal
- ② Coil

Example: E203AV25///20E FPM seal  
 Coil 220V 50/60Hz

COILS	Alternating Current ~50/60Hz Volt							Direct Current Volt			Electrical connection	Connectors
	12	24	48	110	220 230	240	380	12	24	48		
Series 2 Width 30 Code ②	20A	20B	20C	20D	20E	20F	20G	200	201	202	DIN 43650A	PG9 code 10349000

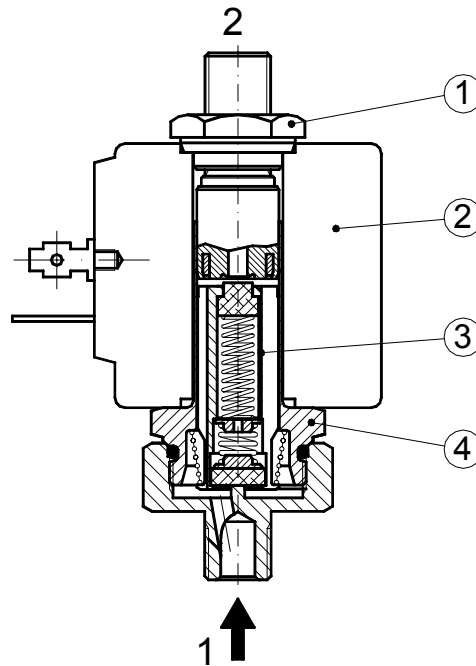
**DESCRIPTION**  
 Class F insulation  
 Voltage tolerance  
 AC +15% -10%  
 DC ± 10%  
 Protection class  
 IP65 with connector fitted  
 IP00 without connector  
 Continuous service ED100%

**OPTIONS**  
 Class H insulation  
 Cable attached  
 Special coil voltages  
 Special coil powers

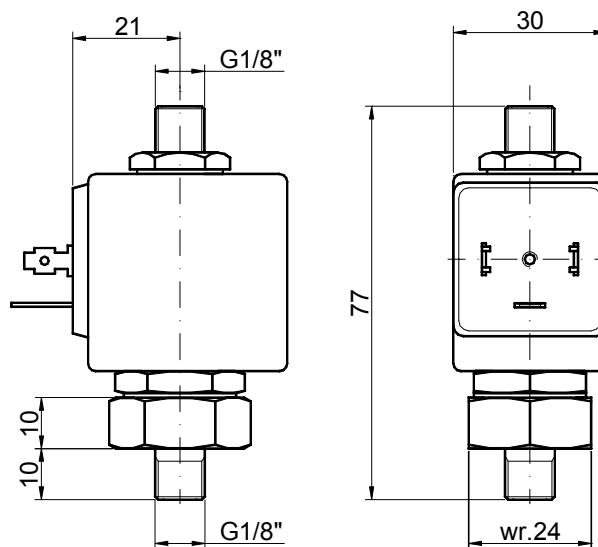


### SPARE PARTS LIST

1. Coil fixing nut
2. Coil
3. Plunger
4. Armature tube with core



### OVERALL DIMENSION



Weight = 0.22 Kg

## DESCRIPTION

Solenoid valve in-line 2 way normally open direct acting poppet type.

## CONSTRUCTION

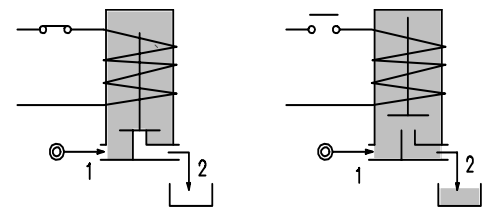
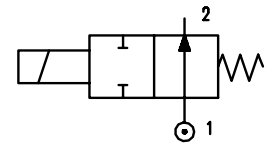
Body	Brass
Armature tube	Brass
Plunger and core	Stainless steel
Springs	Stainless steel
Seal material	NBR
	FPM
	EPDM



2

## FEATURES

Maximum allowable pressure : max working pressure +10%  
 Maximum fluid viscosity 25cSt (mm<sup>2</sup>/s)  
 Ambient temperature : with class F coil -10°C +55°C  
 with class H coil -10°C +80°C  
 Universal mounting position



**OPTIONS :** Armature tube in stainless steel  
 Electroless nickel plating  
 Explosion proof coil according to ATEX - EExmII Series 7  
 User port with hosetail connection

CODE ① ②	Connection G ISO 228	Orifice mm	KV m <sup>3</sup> /h	Differential pressure bar				Nominal power			Coil		Seal ①	Temp. range °C
				Min	Max		AC Inrush	VA Holding	DC Watt	Series	Width			
					AC	DC								
<b>User port with M5 connection</b>														
E204A.....15///.....	1/8"	1.5	0.06	0	16	16	12	8	6.5	3	22	NBR=B	-10 +90	
E204A.....17///.....	1/8"	1.7	0.08	0	12	12	12	8	6.5	3	22			
<b>User port with hosetail connection</b>														
E204A.....15/1/.....	1/8"	1.5	0.06	0	16	16	12	8	6.5	3	22	EPDM=E	<+140	
E204A.....17/1/.....	1/8"	1.7	0.08	0	12	12	12	8	6.5	3	22			
<b>User port with hosetail connection and relief valve</b>														
E204A.....15/3/.....	1/8"	1.5	0.06	0	16	16	12	8	6.5	3	22	FPM=V	-10 +130	
E204A.....17/3/.....	1/8"	1.7	0.08	0	12	12	12	8	6.5	3	22			

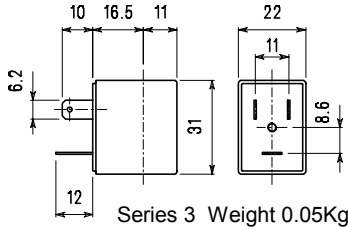
① Seal  
 ② Coil

Example: E204AB17///301 NBR seal  
 Coil 24V DC

COILS	Alternating Current ~50/60Hz Volt							Direct Current Volt			Electrical connection	Connectors
	12	24	48	110	220 230	240	380	12	24	48		
Series 3 Width 22 Code ②	30A	30B	30C	30D	30E	30F	30G	300	301	302	DIN 46244	PG9 code 10348000

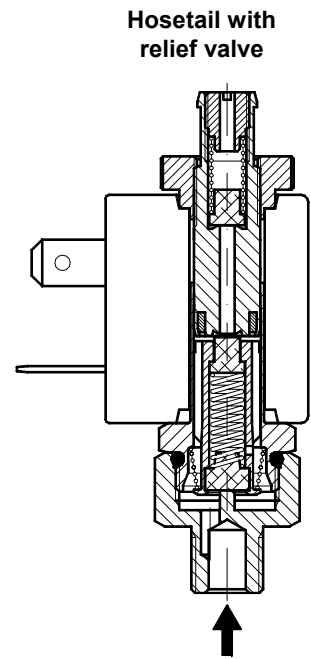
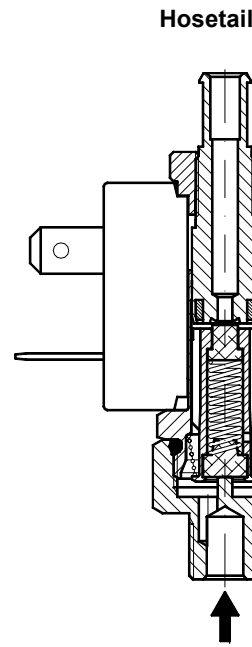
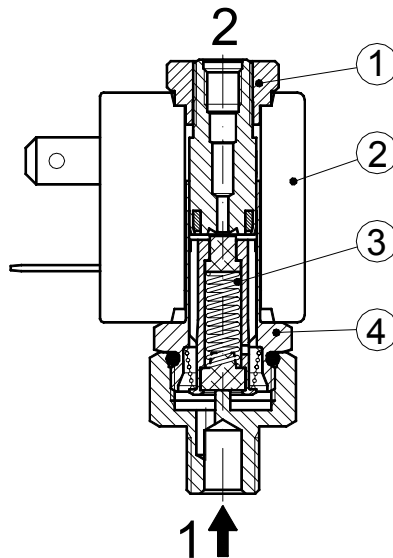
**DESCRIPTION**  
 Class F insulation  
 Voltage tolerance  
 AC +15% -10%  
 DC ± 10%  
 Protection class  
 IP65 with connector fitted  
 IP00 without connector  
 Continuous service ED100%

**OPTIONS**  
 Class H insulation  
 Cable attached  
 Special coil voltages  
 Special coil powers

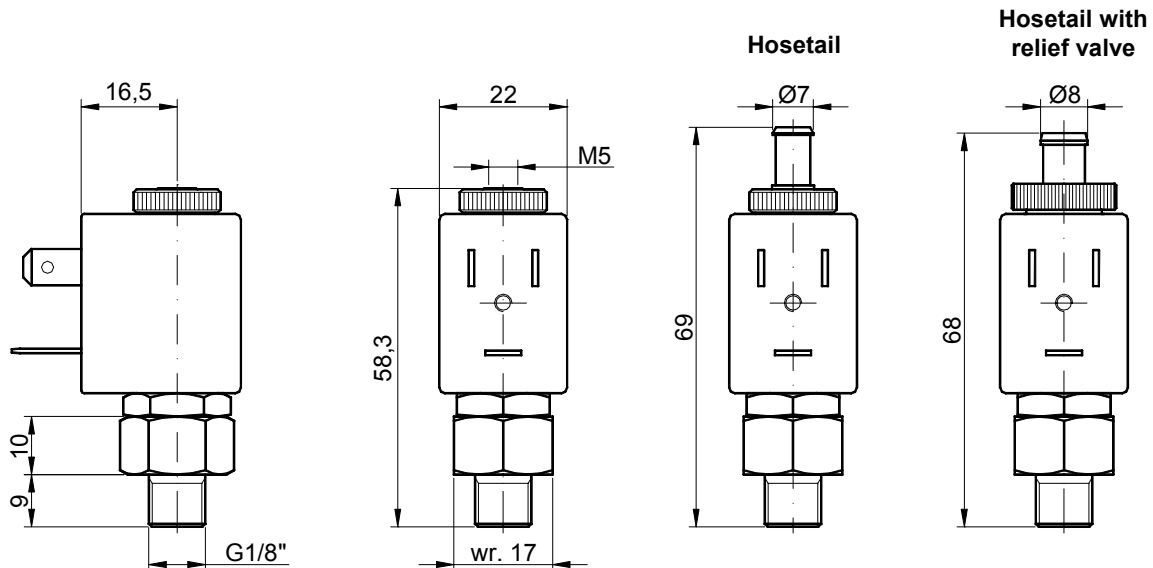


### SPARE PARTS LIST

1. Coil fixing nut
2. Coil
3. Plunger
4. Armature tube with core



### OVERALL DIMENSION



Weight = 0.10 Kg

### DESCRIPTION

Solenoid valve 2 way normally open  
open direct acting poppet type.

### CONSTRUCTION

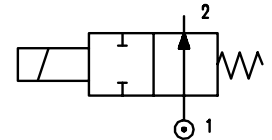
Body	Brass
Armature tube	Brass
Plunger and core	Stainless steel
Springs	Stainless steel
Seal material	NBR
	FPM
	EPDM



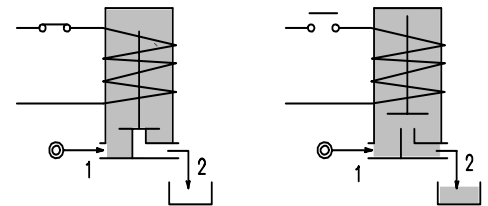
2

### FEATURES

Maximum allowable pressure 50 bar \*  
Maximum fluid viscosity 25cSt (mm<sup>2</sup>/s)  
Ambient temperature : with class F coil -10°C +55°C  
with class H coil -10°C +80°C  
Universal mounting position



**OPTIONS :** Stainless steel armature tube  
Electroless nickel plating  
Explosion proof coil according  
to ATEX - EExmII Series 7



CODE ① ②	Connection G ISO 228	Orifice mm	KV M <sup>3</sup> /h	Differential pressure bar			Nominal power			Coil		Seal ①	Temp. range °C
				Min	Max		AC Inrush	VA Holding	DC Watt	Series	Width		
					AC	DC							
E205A.....12///.....	1/8"	1.2	0.04	0	19	19	12	8	6.5	3	22	NBR=B	-10 +90
E205A.....15///.....	1/8"	1.5	0.06	0	14	14	12	8	6.5	3	22		
E205A.....20///.....	1/8"	2	0.09	0	8	8	12	8	6.5	3	22	EPDM=E	<+140
E205A.....25///.....	1/8"	2.5	0.14	0	4.5	4.5	12	8	6.5	3	22		
E205A.....31///.....	1/8"	3.1	0.19	0	2.5	2.5	12	8	6.5	3	22	FPM=V	-10 +130

- ① Seal
- ② Coil

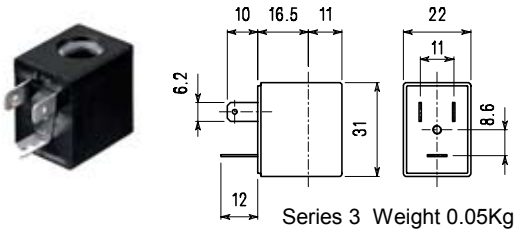
Example: E205AB20///30B NBR seal  
Coil 24V 50/60Hz

\* REMARK: The maximum allowable pressure PS for steam is 2,5bar (gauge pressure)

COILS	Alternating Current ~50/60Hz Volt							Direct Current Volt			Electrical connection	Connectors
	12	24	48	110	220 230	240	380	12	24	48		
Series 3 Width 22 Code ②	30A	30B	30C	30D	30E	30F	30G	300	301	302	DIN 46244	PG9 code 10348000

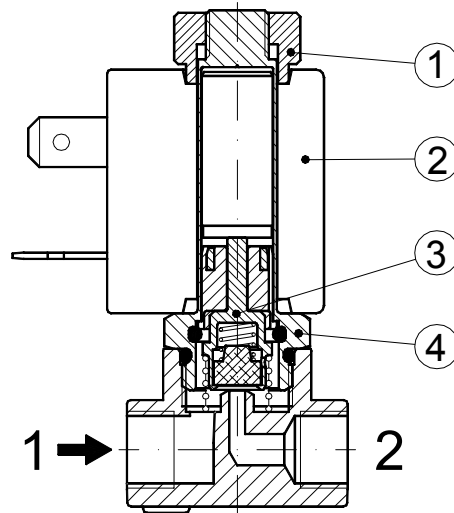
**DESCRIPTION**  
 Class F insulation  
 Voltage tolerance  
 AC +15% -10%  
 DC ± 10%  
 Protection class  
 IP65 with connector fitted  
 IP00 without connector  
 Continuous service ED100%

**OPTIONS**  
 Class H insulation  
 Cable attached  
 Special coil voltages  
 Special coil powers

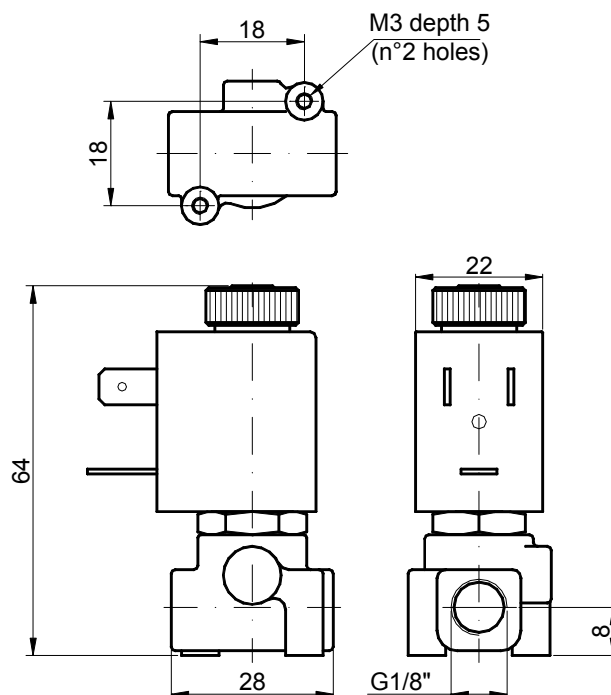


### SPARE PARTS LIST

1. Coil fixing nut
2. Coil
3. Seal assembly
4. Armature tube with core



### OVERALL DIMENSION



Weight = 0.13 Kg



### DESCRIPTION

Solenoid valve 2 way normally open direct acting poppet type.

### CONSTRUCTION

Body	Brass
Armature tube	Brass
Plunger and core	Stainless steel
Springs	Stainless steel
Seal material	NBR
	FPM
	EPDM

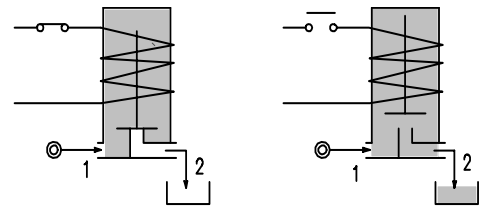
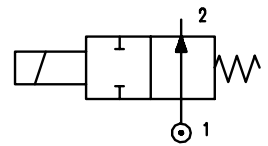


2

### FEATURES

Maximum allowable pressure 50 bar \*  
 Maximum fluid viscosity 25cSt (mm<sup>2</sup>/s)  
 Ambient temperature : with class F coil -10°C +55°C  
 with class H coil -10°C +80°C  
 Universal mounting position

**OPTIONS :** Electroless nickel plating  
 Stainless steel seat  
 Stainless steel armature tube



CODE ① ②	Connection G ISO 228	Orifice mm	KV m <sup>3</sup> /h	Differential pressure bar			Nominal power			Coil		Seal ①	Temp. range °C
				Min	Max		AC Inrush	VA Holding	DC Watt	Series	Width		
					AC	DC							
E206A.....15///.....	1/8"	1.5	0.07	0	23	23	20	15	10	2	30	NBR=B	-10 +90
E206A.....20///.....	1/8"	2	0.1	0	17	17	20	15	10	2	30		
E206A.....25///.....	1/8"	2.5	0.15	0	12	12	20	15	10	2	30		
E206A.....35///.....	1/8"	3.5	0.32	0	7	4 ③	20	15	10	2	30	EPDM=E	<+140
E206B.....15///.....	1/4"	1.5	0.07	0	23	23	20	15	10	2	30		
E206B.....20///.....	1/4"	2	0.1	0	17	17	20	15	10	2	30		
E206B.....25///.....	1/4"	2.5	0.15	0	12	12	20	15	10	2	30	FPM=V	-10 +130
E206B.....35///.....	1/4"	3.5	0.32	0	7	4 ③	20	15	10	2	30		
E206B.....45///.....	1/4"	4.5	0.41	0	4.5	3 ③	20	15	10	2	30		
E206B.....52///.....	1/4"	5.2	0.47	0	3	2.2 ③	20	15	10	2	30		
E206B.....64///.....	1/4"	6.4	0.64	0	3.5	3.5	40	30	27	5	36		

① Seal

Example: E206BB35///20E NBR seal

② Coil

Coil 220V 50/60Hz

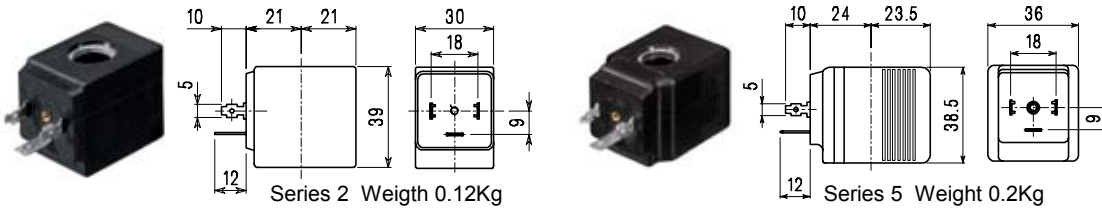
③ Only for the DC on the orifices Ø 3,5 - 4 - 4,5 - 5,2 the code is D206...../3/.....

\* REMARK: The maximum allowable pressure PS for steam is 2,5bar (gauge pressure)

COILS	Alternating Current ~50/60Hz Volt							Direct Current Volt			Electrical connection	Connectors
	12	24	48	110	220 230	240	380	12	24	48		
Series <b>2</b> Width 30 Code ②	20A	20B	20C	20D	20E	20F	20G	200	201	202	DIN 43650A	PG9 code 10349000
Series <b>5</b> Width 36 Code ②	52A	52B	52C	52D	52E	52F	52G	521	521	522	DIN 43650A	PG11 code 10349001

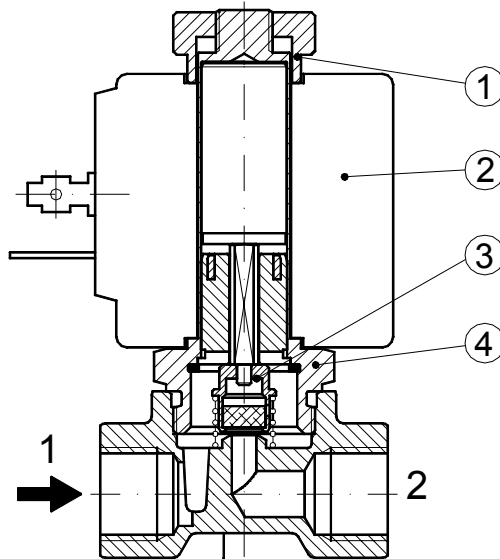
**DESCRIPTION**  
 Insulation class  
 Series 2=F Series 5=H  
 Voltage tolerance  
 AC +15% -10%  
 DC ± 10%  
 Protection class  
 IP65 with connector fitted  
 IP00 without connector  
 Continuous service ED100%

**OPTIONS**  
 Class H insulation (series 2)  
 Cable attached  
 Special coil voltages  
 Special coil powers

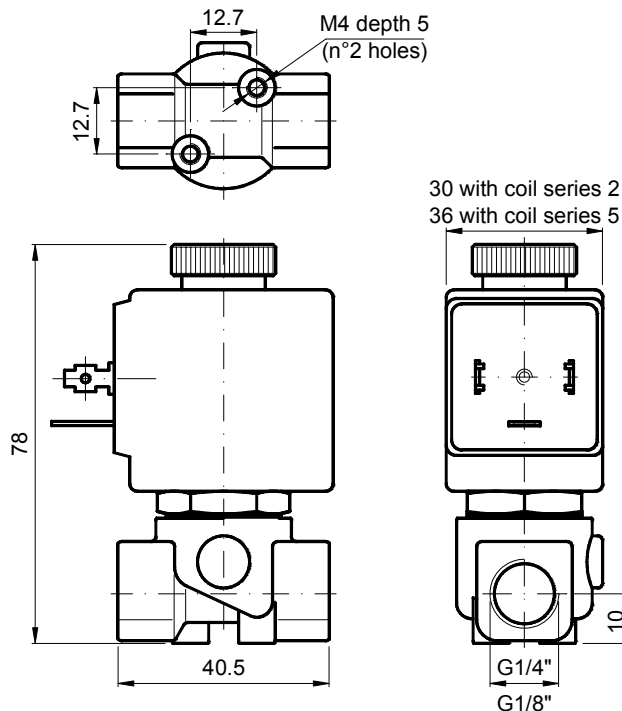


### SPARE PARTS LIST

1. Coil fixing nut
2. Coil
3. Seal assembly
4. Armature tube with core



### OVERALL DIMENSION



Weight with coil series 2 = 0.30 Kg  
 Weight with coil series 5 = 0.38 Kg

### DESCRIPTION

Solenoid valve 2 way normally open  
direct acting poppet type

### CONSTRUCTION

Body	Brass
Armature tube	Brass
Plunger and core	Stainless steel
Springs	Stainless steel
Seal material	NBR
	FPM
	EPDM

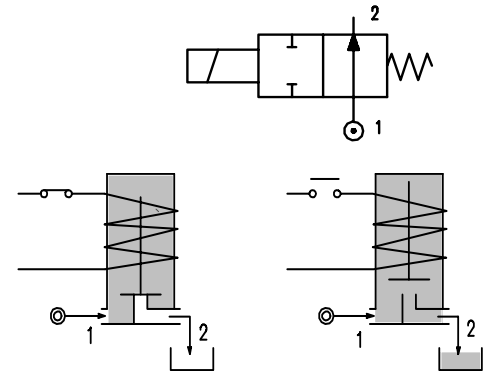


2

### FEATURES

Maximum allowable pressure 50 bar \*  
Maximum fluid viscosity 25cSt (mm<sup>2</sup>/s)  
Ambient temperature : with class F coil -10°C +55°C  
with class H coil -10°C +80°C  
Universal mounting position

**OPTIONS :** Electroless nickel plating  
Stainless steel armature tube



CODE ① ②	Connection G ISO 228	Orifice mm	KV m <sup>3</sup> /h	Differential pressure bar			Nominal power			Coil		Seal ①	Temp. range °C
				Min	Max		AC Inrush	VA Holding	DC Watt	Series	Width		
					AC	DC							
E206C.....30///.....	3/8"	3	0.25	0	9	9	20	15	10	2	30	NBR=B	-10 +90
E206C.....35///.....	3/8"	3.5	0.32	0	7	4 ③	20	15	10	2	30		
E206C.....40///.....	3/8"	4	0.36	0	5.5	3.5 ③	20	15	10	2	30		
E206C.....45///.....	3/8"	4.5	0.41	0	4.5	3 ③	20	15	10	2	30		
E206C.....52///.....	3/8"	5.2	0.47	0	3	2.2	20	15	10	2	30	EPDM=E	<+140
E206C.....64///.....	3/8"	6.4	0.64	0	3.5	3.5	40	30	27	5	36		
E206D.....30///.....	1/2"	3	0.25	0	9	9	20	15	10	2	30	FPM=V	-10 +130
E206D.....35///.....	1/2"	3.5	0.32	0	7	4 ③	20	15	10	2	30		
E206D.....40///.....	1/2"	4	0.36	0	5.5	3.5 ③	20	15	10	2	30		
E206D.....45///.....	1/2"	4.5	0.41	0	4.5	3 ③	20	15	10	2	30		
E206D.....52///.....	1/2"	5.2	0.47	0	3	2.2 ③	20	15	10	2	30		
E206D.....64///.....	1/2"	6.4	0.64	0	3.5	3.5	40	30	27	5	36		

- ① Seal
- ② Coil

Example: E206CB45///20E NBR seal  
Coil 220V 50/60Hz

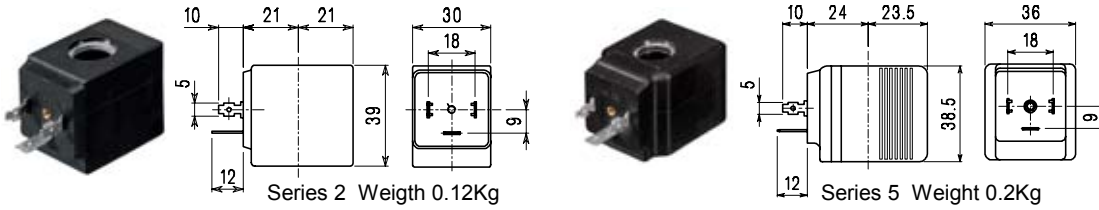
- ③ Only for the DC on the orifices Ø 3,5 - 4 - 4,5 - 5,2 the code is D206...../3/.....

\* REMARK: The maximum allowable pressure PS for steam is 2,5bar (gauge pressure)

COILS	Alternating Current ~50/60Hz Volt							Direct Current Volt			Electrical connection	Connectors
	12	24	48	110	220 230	240	380	12	24	48		
Series 2 Width 30 Code ②	20A	20B	20C	20D	20E	20F	20G	200	201	202	DIN 43650A	PG9 code 10349000
Series 5 Width 36 Code ②	52A	52B	52C	52D	52E	52F	52G	521	521	522	DIN 43650A	PG11 code 10349001

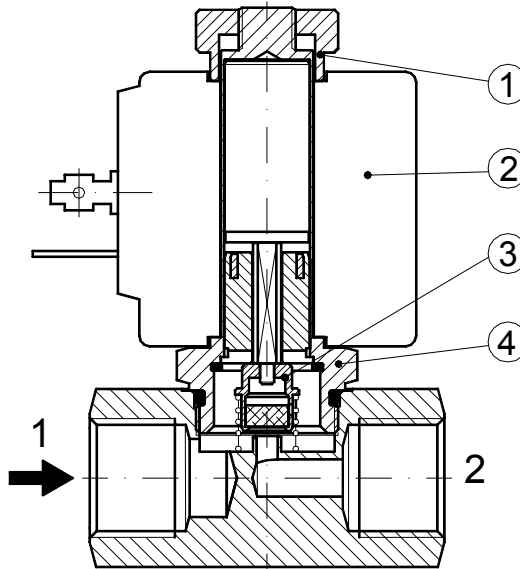
**DESCRIPTION**  
 Insulation class  
 Series 2=F Series 5=H  
 Voltage tolerance  
 AC +15% -10%  
 DC ± 10%  
 Protection class  
 IP65 with connector fitted  
 IP00 without connector  
 Continuous service ED100%

**OPTIONS**  
 Class H insulation (series 2)  
 Cable attached  
 Special coil voltages  
 Special coil powers

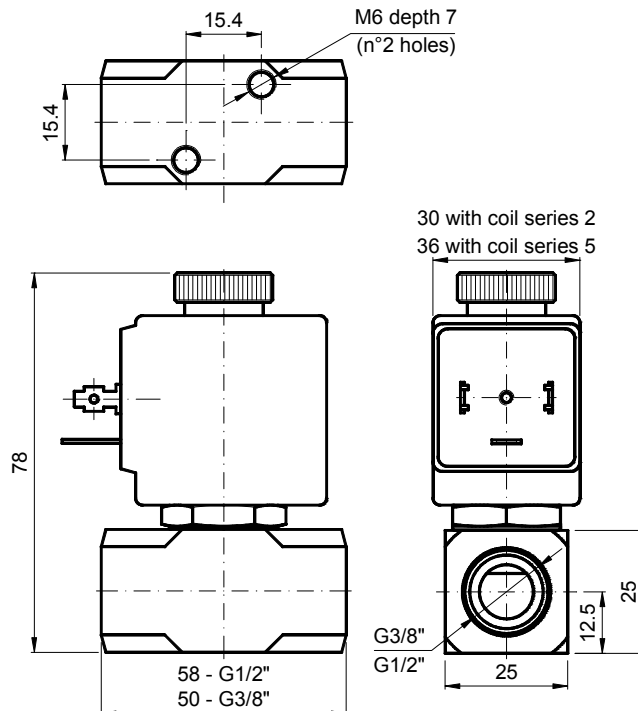


### SPARE PARTS LIST

1. Coil fixing nut
2. Coil
3. Seal assembly
4. Armature tube



### OVERALL DIMENSION



Weight with coil series 2 = 0.36 Kg  
 Weight with coil series 5 = 0.44 Kg

## DESCRIPTION

Solenoid valve 2 way normally open  
direct acting poppet type

## CONSTRUCTION

Body	Stainless steel
Armature tube	Stainless steel
Plunger and core	Stainless steel
Springs	Stainless steel
Seal material	NBR
	FPM
	EPDM

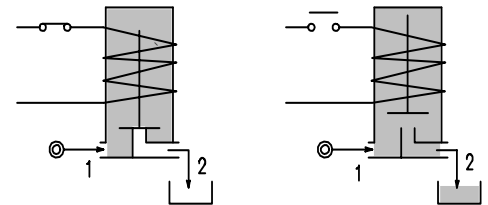
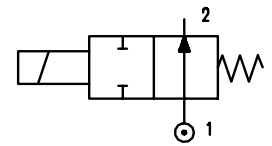


2

## FEATURES

Maximum allowable pressure 50 bar \*  
Maximum fluid viscosity 25cSt (mm<sup>2</sup>/s)  
Ambient temperature : with class F coil -10°C +55°C  
with class H coil -10°C +80°C  
Universal mounting position

**OPTIONS :** Silver shading ring



CODE ① ②	Connection G ISO 228	Orifice mm	KV m <sup>3</sup> /h	Differential pressure bar			Nominal power			Coil		Seal ①	Temp. range °C
				Min	Max		AC Inrush	VA Holding	DC Watt	Series	Width		
					AC	DC							
E210B.....20///.....	1/4"	2	0.1	0	17	17	20	15	10	2	30	NBR=B	-10 +90
E210B.....25///.....	1/4"	2.5	0.15	0	12	12	20	15	10	2	30		
E210B.....35///.....	1/4"	3.5	0.32	0	7	4 ③	20	15	10	2	30		
E210B.....45///.....	1/4"	4.5	0.41	0	4.5	3 ③	20	15	10	2	30		
E210B.....52///.....	1/4"	5.2	0.47	0	3	2.2③	20	15	10	2	30		
E210C.....20///.....	3/8"	2	0.1	0	17	17	20	15	10	2	30	EPDM=E	<+140
E210C.....35///.....	3/8"	3.5	0.32	0	7	4 ③	20	15	10	2	30		
E210C.....52///.....	3/8"	5.2	0.47	0	3	2.2③	20	15	10	2	30		
E210C.....64///.....	3/8"	6.4	0.64	0	3.5	3.5	40	30	27	5	36	FPM=V	-10 +130
E210D.....20///.....	1/2"	2	0.1	0	17	17	20	15	10	2	30		
E210D.....35///.....	1/2"	3.5	0.32	0	7	4 ③	20	15	10	2	30		
E210D.....52///.....	1/2"	5.2	0.47	0	3	2.2③	20	15	10	2	30		
E210D.....64///.....	1/2"	6.4	0.64	0	3.5	3.5	40	30	27	5	36		

① Seal Example: E210BB52///20B NBR seal  
② Coil Coil 24V 50/60Hz

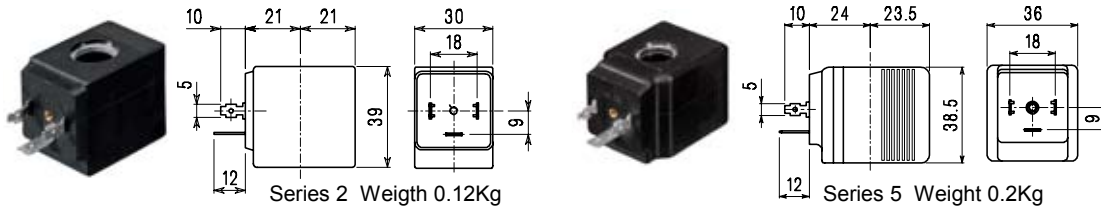
③ Only for the DC on the orifices Ø 3,5 - 4 - 4,5 - 5,2 the code is D210...../3/.....

\* REMARK: The maximum allowable pressure PS for steam is 2,5bar (gauge pressure)

COILS	Alternating Current ~50/60Hz Volt							Direct Current Volt			Electrical connection	Connectors
	12	24	48	110	220 230	240	380	12	24	48		
Series <b>2</b> Width 30 Code ②	20A	20B	20C	20D	20E	20F	20G	200	201	202	DIN 43650A	PG9 code 10349000
Series <b>5</b> Width 36 Code ②	52A	52B	52C	52D	52E	52F	52G	521	521	522	DIN 43650A	PG11 code 10349001

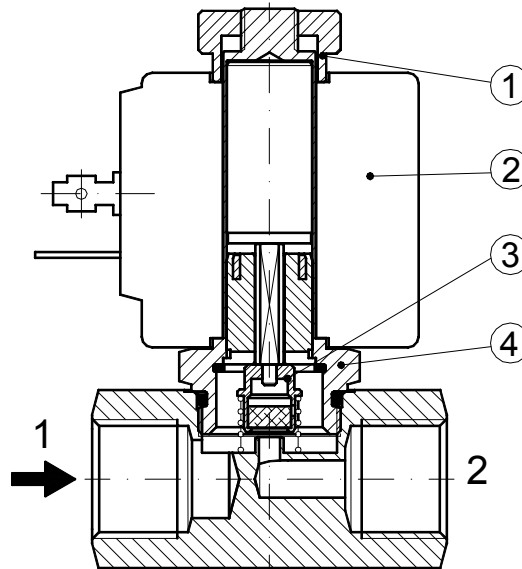
**DESCRIPTION**  
 Insulation class  
 Series 2=F Series 5=H  
 Voltage tolerance  
 AC +15% -10%  
 DC ± 10%  
 Protection class  
 IP65 with connector fitted  
 IP00 without connector  
 Continuous service ED100%

**OPTIONS**  
 Class H insulation (series 2)  
 Cable attached  
 Special coil voltages  
 Special coil powers

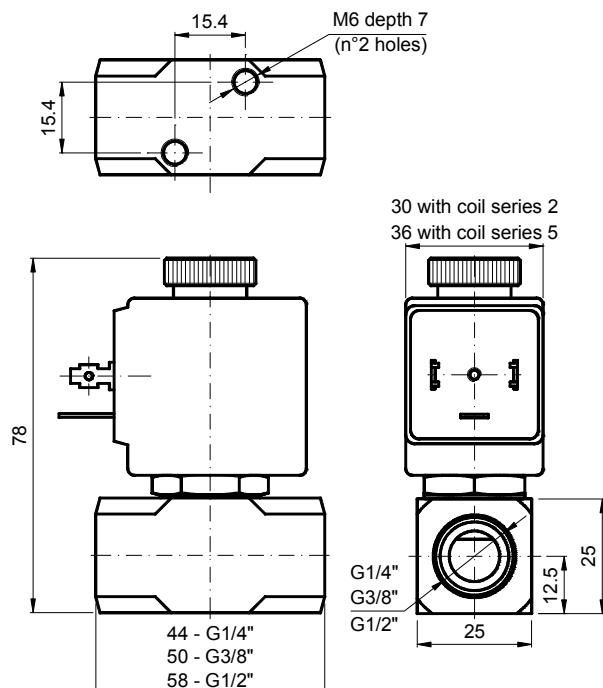


### SPARE PARTS LIST

1. Coil fixing nut
2. Coil
3. Seal assembly
4. Armature tube



### OVERALL DIMENSION



Weight with coil series 2 = 0.30 Kg  
 Weight with coil series 5 = 0.38 Kg

### DESCRIPTION

Solenoid valve 2 way normally open direct acting poppet type.

### CONSTRUCTION

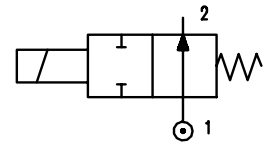
Body	Brass
Armature tube	Brass
Plunger and core	Stainless steel
Springs	Stainless steel
Seal material	NBR
	FPM
	EPDM



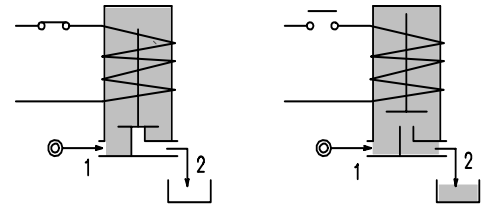
2

### FEATURES

Maximum allowable pressure 50 bar \*  
 Maximum fluid viscosity 25cSt (mm<sup>2</sup>/s)  
 Ambient temperature : with class F coil -10°C +55°C  
 with class H coil -10°C +80°C  
 Universal mounting position



**OPTIONS :** Stainless steel armature tube  
 Electroless nickel plating  
 Explosion proof coil according to ATEX - EExmII Series 7



CODE ① ②	Flange	Orifice mm	KV m <sup>3</sup> /h	Differential pressure bar			Nominal power			Coil		Seal ①	Temp. Range °C
				Min	Max		AC Inrush	VA Holding	DC Watt	Series	Width		
					AC	DC							
E212X.....12///.....	Q 25	1.2	0.04	0	19	19	12	8	6.5	3	22	NBR=B EPDM=E FPM=V	-10 +90 <+140 -10 +130
E212X.....15///.....	Q 25	1.5	0.06	0	14	14	12	8	6.5	3	22		
E212X.....20///.....	Q 25	2	0.09	0	8	8	12	8	6.5	3	22		
E212X.....25///.....	Q 25	2.5	0.14	0	4.5	4.5	12	8	6.5	3	22		

① Seal Example: E212XB20///30B NBR seal  
 ② Coil Coil 24V 50/60Hz

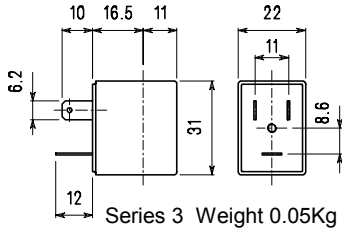
Solenoid valve supplied without fixing screws

\* REMARK: The maximum allowable pressure PS for steam is 2,5bar (gauge pressure)

COILS	Alternating Current ~50/60Hz Volt							Direct Current Volt			Electrical connection	Connectors
	12	24	48	110	220 230	240	380	12	24	48		
Series 3 Width 22 Code ②	30A	30B	30C	30D	30E	30F	30G	300	301	302	DIN 46244	PG9 code 10348000

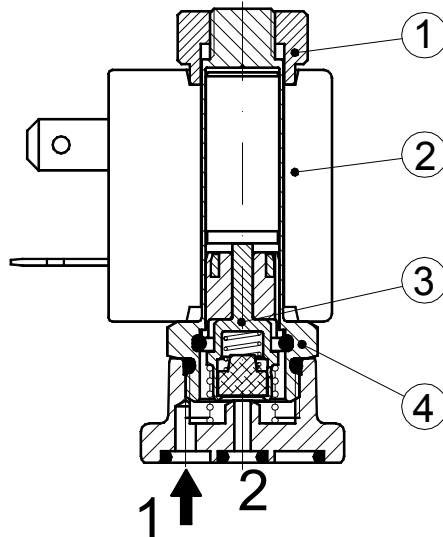
**DESCRIPTION**  
 Class F insulation  
 Voltage tolerance  
 AC +15% -10%  
 DC ± 10%  
 Protection class  
 IP65 with connector fitted  
 IP00 without connector  
 Continuous service ED100%

**OPTIONS**  
 Class H insulation  
 Cable attached  
 Special coil voltages  
 Special coil powers

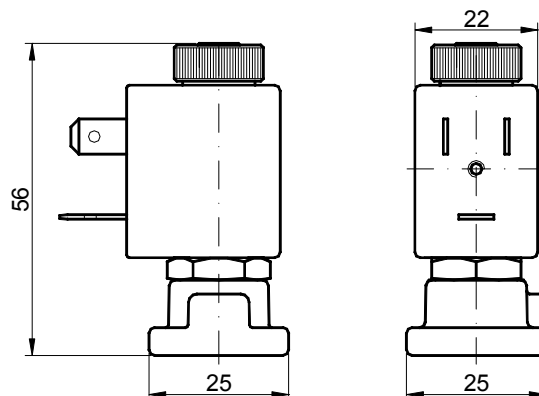
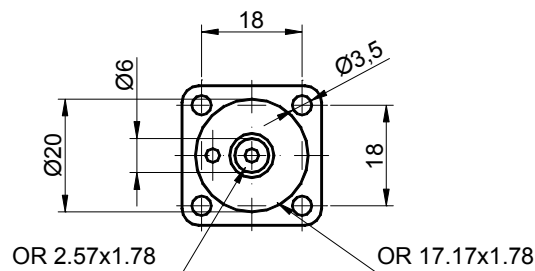


### SPARE PARTS LIST

1. Coil fixing nut
2. Coil
3. Seal assembly
4. Armature tube



### OVERALL DIMENSION



Weight = 0.12 Kg



**DESCRIPTION**

Solenoid valve 2 way normally open direct acting poppet type.

**CONSTRUCTION**

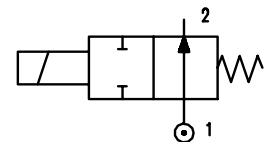
Body	Brass
Armature tube	Brass
Plunger and core	Stainless steel
Springs	Stainless steel
Seal material	NBR
	FPM
	EPDM



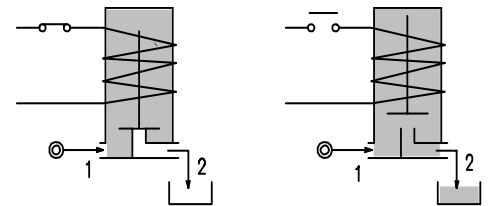
**2**

**FEATURES**

Maximum allowable pressure 50 bar \*  
 Maximum fluid viscosity 25cSt (mm<sup>2</sup>/s)  
 Ambient temperature : with class F coil F -10°C +55°C  
 with class H coil -10°C +80°C  
 Universal mounting position



**OPTIONS :** Stainless steel armature tube  
 Electroless nickel plating



CODE ① ②	Flange	Orifice mm	KV m <sup>3</sup> /h	Differential pressure bar			Nominal power			Coil		Seal ①	Temp. range °C
				Min	Max		AC Inrush	VA Holding	DC Watt	Series	Width		
					AC	DC							
E214X.....15///.....	Q 32	1.5	0.07	0	23	23	20	15	10	2	30	NBR=B	-10 +90
E214X.....20///.....	Q 32	2	0.1	0	17	17	20	15	10	2	30		
E214X.....25///.....	Q 32	2.5	0.15	0	12	12	20	15	10	2	30	EPDM=E	<+140
E214X.....35///.....	Q 32	3.5	0.32	0	7	4 ③	20	15	10	2	30		
E214X.....45///.....	Q 32	4.5	0.41	0	4.5	3 ③	20	15	10	2	30	FPM=V	-10 +130
E214X.....52///.....	Q 32	5.2	0.47	0	3	2.2 ③	20	15	10	2	30		

① Seal Example: E214XV52///20B FPM seal  
 ② Coil Coil 24V 50/60Hz

③ Only for the DC on the orifices Ø 3,5 - 4,5 - 5,2 the code is D214...../5/.....

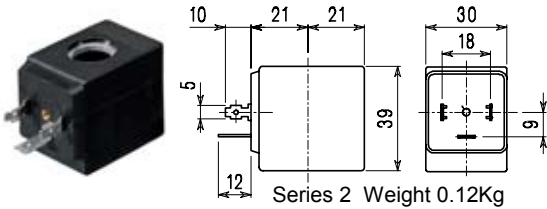
Solenoid valve supplied without fixing screws

\* REMARK: The maximum allowable pressure PS for steam is 2,5bar (gauge pressure)

COILS	Alternating Current ~50/60Hz Volt							Direct current Volt			Electrical connection	Connectors
	12	24	48	110	220 230	240	380	12	24	48		
Series 2 Width 30 Code ②	20A	20B	20C	20D	20E	20F	20G	200	201	202	DIN 43650A	PG9 code 10349000

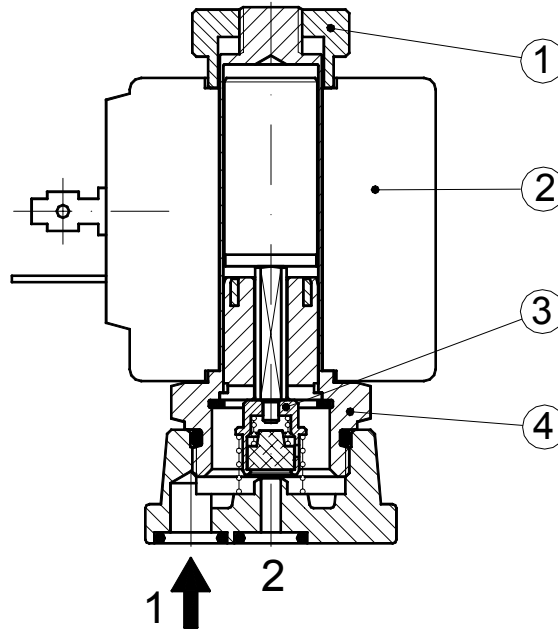
**DESCRIPTION**  
 Class F insulation  
 Voltage tolerance  
 AC +15% -10%  
 DC ± 10%  
 Protection class  
 IP65 with connector fitted  
 IP00 without connector  
 Continuous service ED100%

**OPTIONS**  
 Class H insulation  
 Cable attached  
 Special coil voltages  
 Special coil powers

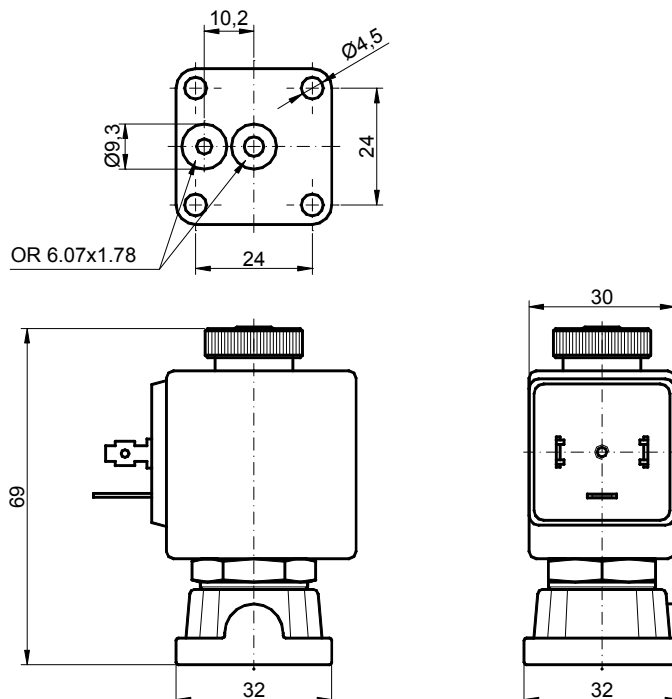


### SPARE PARTS LIST

1. Coil fixing nut
2. Coil
3. Seal assembly
4. Armature tube with core



### OVERALL DIMENSION



Weight = 0.25 Kg

## DESCRIPTION

Solenoid valve 2 way normally open direct acting poppet type, suitable for food application and all compatible fluids.

## CONSTRUCTION

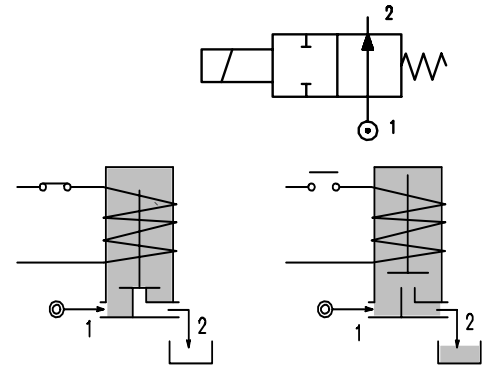
Body	Thermoplastic polymer: NSF, WRC, KTW, FDA certified
Armature tube	Brass chemically nickel plated
Plunger and core	Stainless steel
Springs	Stainless steel
Seal material	NBR food contact certified FPM food contact certified EPDM food contact certified



2

## FEATURES

Maximum allowable pressure 20 bar \*  
 Maximum fluid viscosity 25cSt (mm<sup>2</sup>/s)  
 Ambient temperature : with class F coil -10°C +55°C  
 with class H coil -10°C +80°C  
 Universal mounting position



**OPTIONS :** Stainless steel armature tube  
 Type N connection without nut

CONNECTIONS					
K	N	P	W ③	Y	Z
<b>SPIGGOT</b>	<b>G1/8" male thread with NUT for flexible and semiflexible pipes</b>	<b>HOSETAIL for flexible pipes</b>	<b>COMPRESSION for flexible and semiflexible pipes</b>	<b>PUSH IN for semiflexible pipes Øext.6</b>	<b>PUSH IN for semiflexible pipes Øext.4</b>

CODE ① ②	Connection *	Orifice mm	KV m <sup>3</sup> /h	Differential pressure bar			Nominal power			Coil		Seal ①	Temperature range °C
				Min	Max		AC Inrush	VA Holding	DC Watt	Series	Width		
					AC	DC							
E235*.....15///.....	K-N-P-W-Y-Z	1.5	0.06	0	14	14	12	8	6.5	3	22	NBR=A	-10 +90
E235*.....20///.....	K-N-P-W-Y-Z	2	0.09	0	8	8	12	8	6.5	3	22	EPDM=E	<+140
E235*.....25///.....	K-N-P-W-Y-Z	2.5	0.14	0	4.5	4.5	12	8	6.5	3	22	FPM=V	-10 +130

① Seal Example: E235PV20///30E FPM seal HOSETAIL connection  
 ② Coil Coil 230V 50/60Hz

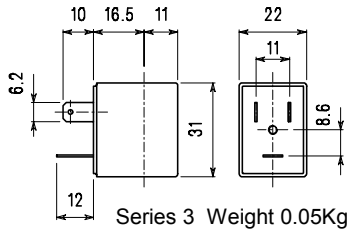
③ Only for connection "W" E235W...../1/.....

\* REMARK: The maximum allowable pressure PS for steam is 2,5bar (gauge pressure)

COILS	Alternating Current ~50/60Hz Volt							Direct Current Volt			Electrical connection	Connectors
	12	24	48	110	220 230	240	380	12	24	48		
Series 3 Width 22 Code ②	30A	30B	30C	30D	30E	30F	30G	300	301	302	DIN 46244	PG9 code 10348000

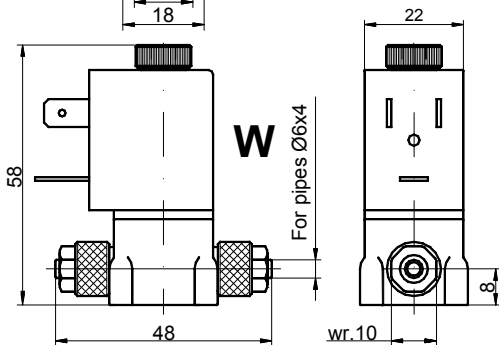
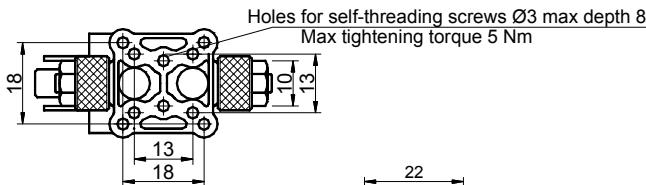
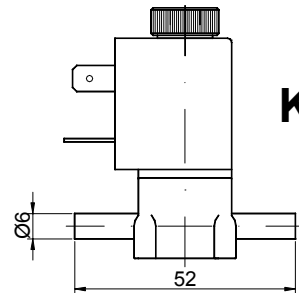
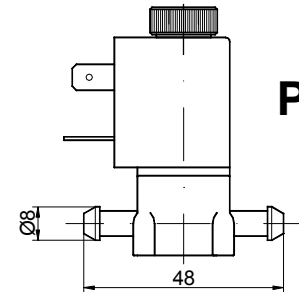
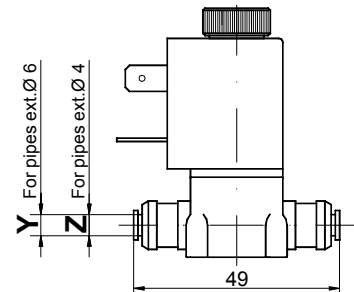
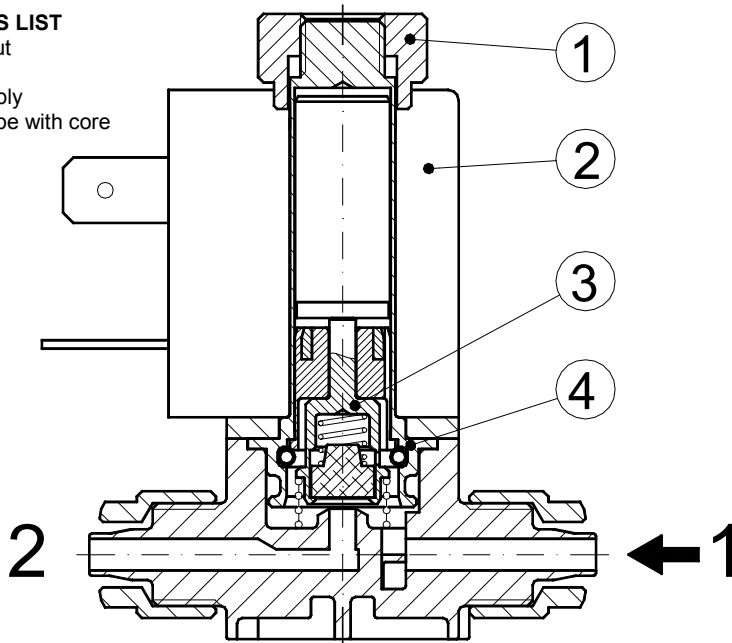
**DESCRIPTION**  
 Class F insulation  
 Voltage tolerance  
 AC +15% -10%  
 DC ± 10%  
 Protection class  
 IP65 with connector fitted  
 IP00 without connector  
 Continuous service ED100%

**OPTIONS**  
 Class H insulation  
 Cable attached  
 Special coil voltages  
 Special coil powers

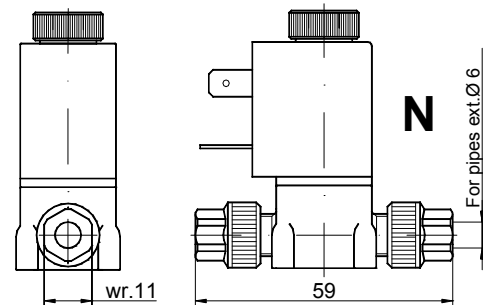


### SPARE PARTS LIST

1. Coil fixing nut
2. Coil
3. Seal assembly
4. Armature tube with core



Nut Max torque 2 Nm



Screw the nut with wrench 11 up to the sliding on the hexagon (TORQUE LIMITING DEVICE)

Weight = 0.10 Kg