

### DESCRIPTION

Solenoid valve 3 way  
direct acting poppet type

### CONSTRUCTION

Body	Brass
Armature tube	Brass
Plunger and core	Stainless steel
Springs	Stainless steel
Seal material	NBR
	FPM
	EPDM



### FEATURES

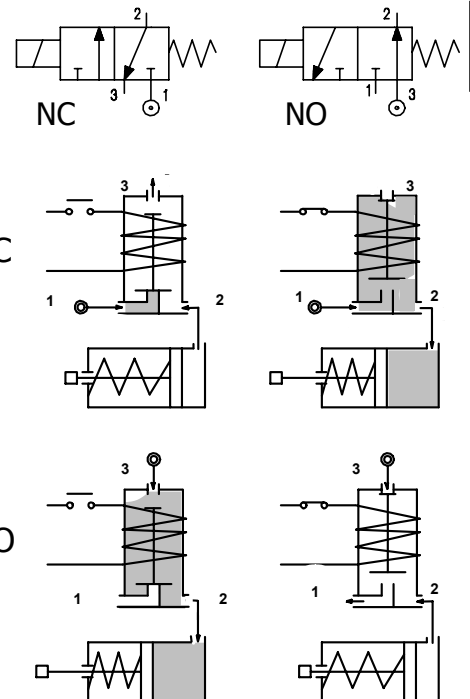
Maximum allowable pressure : maximum differential pressure +10%

Maximum fluid viscosity 25cSt (mm<sup>2</sup>/s)

Ambient temperature : with class F coil -10°C +55°C  
with class H coil -10°C +80°C

Universal mounting position

- OPTIONS :** Stainless steel armature tube  
Electroless nickel plating  
Explosion proof coil according to ATEX - EExmII Series7  
Exhaust port with hosedetail connection



3

CODE ① ②	Connection G ISO 228	Orifice mm		KV m <sup>3</sup> /h	Differential pressure bar			Nominal power			Coil		Seal ①	Temp. range °C
		Inlet	Exh.		Min	Max		AC Inrush	VA Holding	DC Watt	Series	Width		
						AC	DC							
<b>NC Normally closed</b>														
E304A.....15///.....	1/8"	1.5	0.06	0	10	10	12	8	6.5	3	22	NBR=B EPDM=E FPM=V	-10 +90 <+140 -10 +130	
<b>NO Normally open</b>														
E304A.....15/S/.....	1/8"	1.5	0.06	0	10	10	12	8	6.5	3	22			

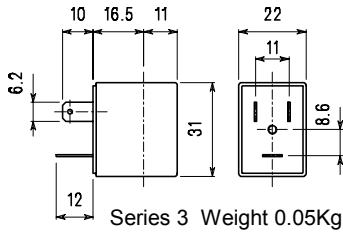
- ① Seal  
② Coil

Example: E304AV15///30B FPM seal Coil 24V 50/60Hz NC  
E304AB15/S/301 NBR seal Coil 24V DC NO

COILS	Alternating Current ~50/60Hz Volt							Direct Current Volt			Electrical connection	Connectors
	12	24	48	110	220 230	240	380	12	24	48		
Series 3 Width 22 Code ②	30A	30B	30C	30D	30E	30F	30G	300	301	302	DIN 46244	PG9 code 10348000

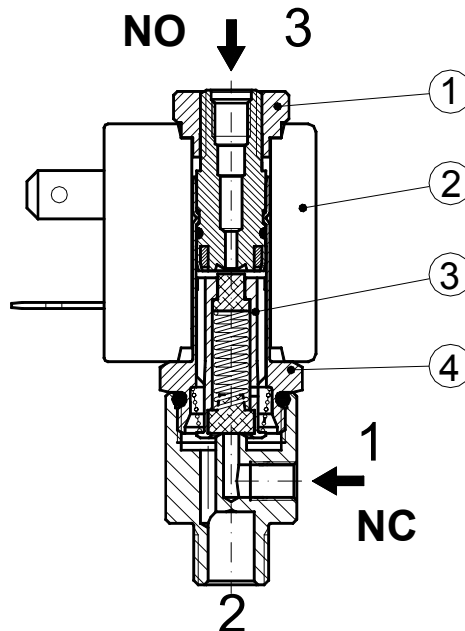
**DESCRIPTION**  
 Class F insulation  
 Voltage tolerance  
 AC +15% -10%  
 DC ± 10%  
 Protection class  
 IP65 with connector fitted  
 IP00 without connector  
 Continuous service ED100%

**OPTIONS**  
 Class H insulation  
 Cable attached  
 Special coil voltages  
 Special coil powers

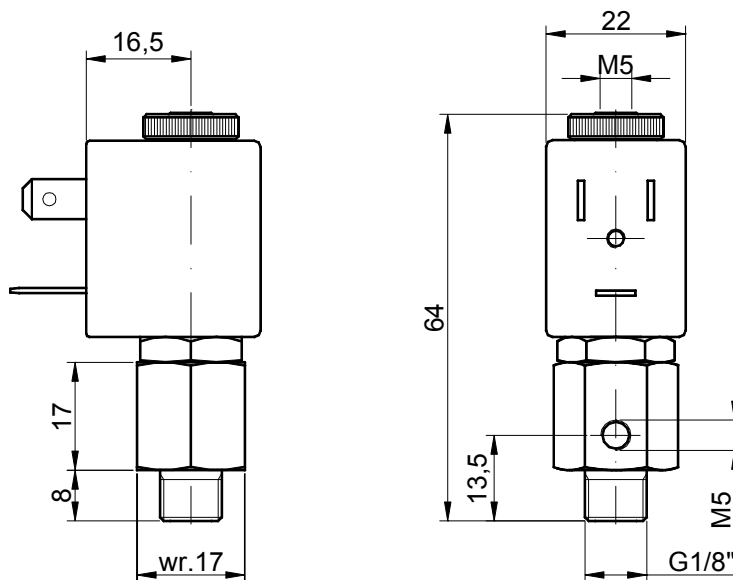


### SPARE PARTS LIST

1. Coil fixing nut
2. Coil
3. Plunger
4. Armature tube with core



### OVERALL DIMENSION



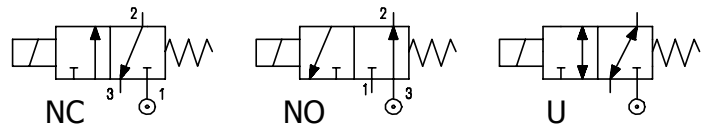
Weight = 0.11 Kg

### DESCRIPTION

Solenoid valve 3 way  
direct acting poppet type

### CONSTRUCTION

Body	Brass
Armature tube	Brass
Plunger and core	Stainless steel
Springs	Stainless steel
Seal material	NBR
	FPM
	EPDM



3

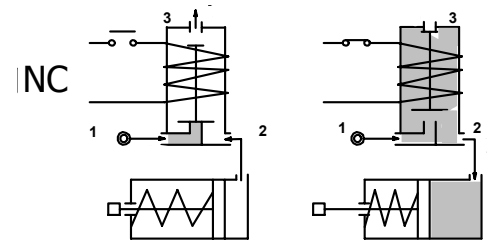
### FEATURES

Maximum allowable pressure : maximum differential pressure+10%

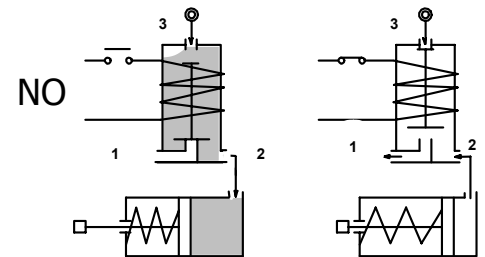
Maximum fluid viscosity 25cSt (mm<sup>2</sup>/s)

Ambient temperature : with class F coil -10°C +55°C  
with class H coil -10°C +80°C

Universal mounting position



- OPTIONS :** Manual override  
Stainless steel armature tube  
Electroless nickel plating  
Explosion proof coil according to ATEX - EExmII Series7  
Exhaust port with hosetail connection



CODE ① ②	Connection G ISO 228	Orifice mm		KV m <sup>3</sup> /h	Differential pressure bar				Nominal power			Coil		Seal ①	Temp. range °C
		Inlet	Exh.		Min	Max		AC Inrush	VA Holding	DC Watt	Series	Width			
						AC	DC								
<b>NC Normally closed</b>															
E305A.....12///.....	1/8"	1.2	1.5	0.04	0	15	15	12	8	6.5	3	22	NBR=B	-10 +90	
E305A.....15///.....	1/8"	1.5	1.5	0.06	0	10	10	12	8	6.5	3	22			
E305A.....20///.....	1/8"	2	1.7	0.09	0	6	6	12	8	6.5	3	22			
<b>NO Normally open</b>															
E305A.....15/S/.....	1/8"	1.5	1.5	0.06	0	10	10	12	8	6.5	3	22	EPDM=E	<+140	
E305A.....17/S/.....	1/8"	1.7	2	0.07	0	6	6	12	8	6.5	3	22			
<b>U Universal</b>															
E305A.....15/G/.....	1/8"	1.5	1.5	0.06	0	6	6	12	8	6.5	3	22	FPM=V	-10 +130	

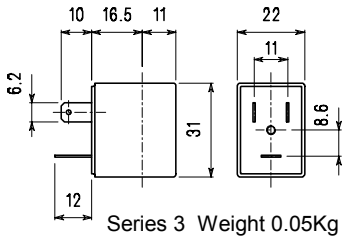
- ① Seal  
② Coil

Example: E305AV15///30B FPM seal Coil 24V 50/60Hz NC  
E305AB15/S/301 NBR seal Coil 24V DC NO

COILS	Alternating Current ~50/60Hz Volt							Direct Current Volt			Electrical connection	Connectors
	12	24	48	110	220 230	240	380	12	24	48		
Series 3 Width 22 Code ②	30A	30B	30C	30D	30E	30F	30G	300	301	302	DIN 46244	PG9 code 10348000

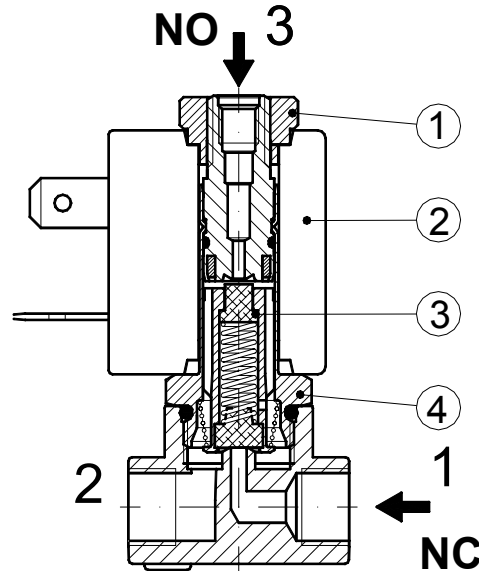
**DESCRIPTION**  
 Class F insulation  
 Voltage tolerance  
 AC +15% -10%  
 DC ± 10%  
 Protection class  
 IP65 with connector fitted  
 IP00 without connector  
 Continuous service ED100%

**OPTIONS**  
 Class H insulation  
 Cable attached  
 Special coil voltages  
 Special coil powers

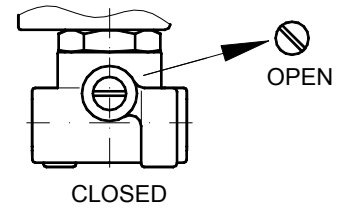


### SPARE PARTS LIST

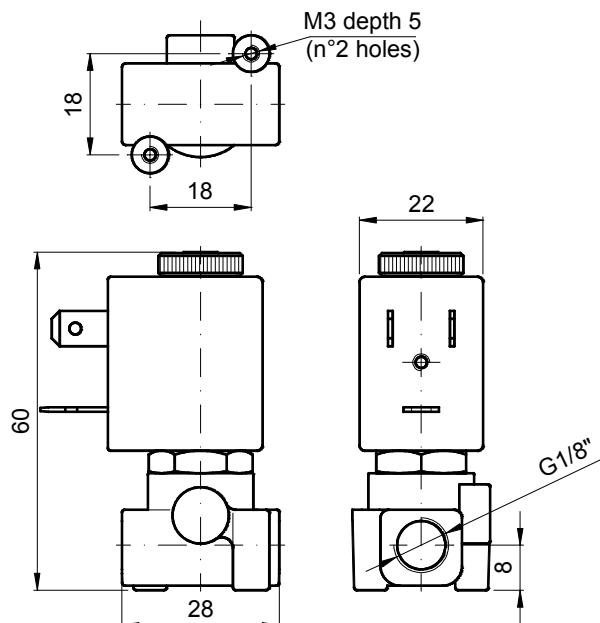
1. Coil fixing nut
2. Coil
3. Plunger
4. Armature tube with core



### MANUAL OVERRIDE



### OVERALL DIMENSION



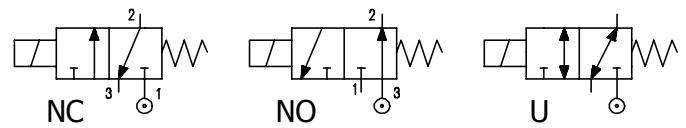
Weight = 0.13 Kg

## DESCRIPTION

Solenoid valve 3 way  
direct acting poppet type

## CONSTRUCTION

Body	Brass
Armature tube	Stainless steel
Plunger and core	Stainless steel
Springs	Stainless steel
Seal material	NBR
	FPM
	EPDM



## FEATURES

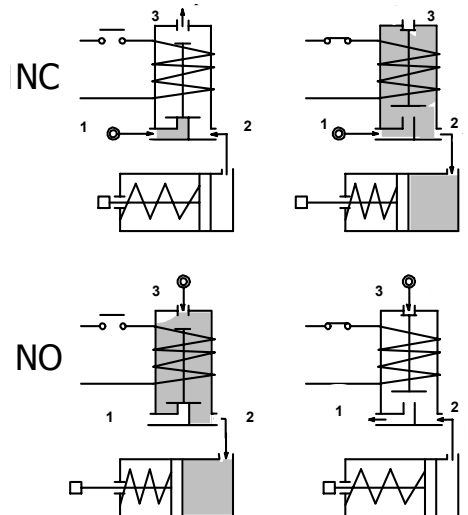
Maximum allowable pressure : maximum differential pressure +10%

Maximum fluid viscosity 25cSt (mm<sup>2</sup>/s)

Ambient temperature : with class F coil -10°C +55°C  
with class H coil -10°C +80°C

Universal mounting position

**OPTIONS :** Manual override  
Electroless nickel plating  
Stainless steel seat



**3**

CODE ① ②	Connection G ISO 228	Orifice mm		KV m <sup>3</sup> /h	Differential pressure bar			Nominal power			Coil		Seal ①	Temp. range °C
		Inlet	Exh.		Min	Max		AC Inrush	VA Holding	DC Watt	Series	Width		
						AC	DC							
<b>NC Normally closed</b>														
E306A.....15///.....	1/8"	1.5	2.4	0.07	0	20	20	20	15	10	2	30	NBR=B	-10 +90
E306A.....20///.....	1/8"	2	2.4	0.11	0	13	13	20	15	10	2	30		
E306A.....25///.....	1/8"	2.5	2.4	0.16	0	10	10	20	15	10	2	30		
E306B.....15///.....	1/4"	1.5	2.4	0.07	0	20	20	20	15	10	2	30	EPDM=E	<+140
E306B.....20///.....	1/4"	2	2.4	0.11	0	13	13	20	15	10	2	30		
E306B.....25///.....	1/4"	2.5	2.4	0.16	0	10	10	20	15	10	2	30		
<b>NO Normally open</b>														
E306B.....24/S/.....	1/4"	2.4	2.5	0.16	0	9	9	20	15	10	2	30	FPM=V	-10 +130
E306B.....29/S/.....	1/4"	2.9	3	0.20	0	6.5	6.5	20	15	10	2	30		
<b>U Universal</b>														
E306B.....25/G/.....	1/4"	2.5	2.4	0.16	0	5	4	20	15	10	2	30		

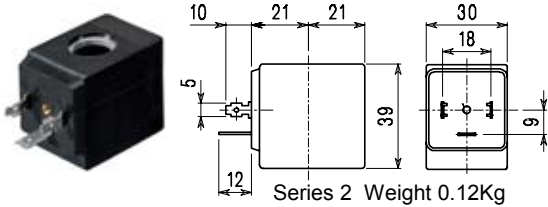
- ① Seal
- ② Coil

Example: E306BV15///20B FPM seal Coil 24V 50/60Hz NC  
E306BB24/S/201 NBR seal Coil 24V DC NO

COILS	Alternating Current ~50/60Hz Volt							Direct Current Volt			Electrical connection	Connectors
	12	24	48	110	220 230	240	380	12	24	48		
Series 2 Width 30 Code ②	20A	20B	20C	20D	20E	20F	20G	200	201	202	DIN 43650A	PG9 code 10349000

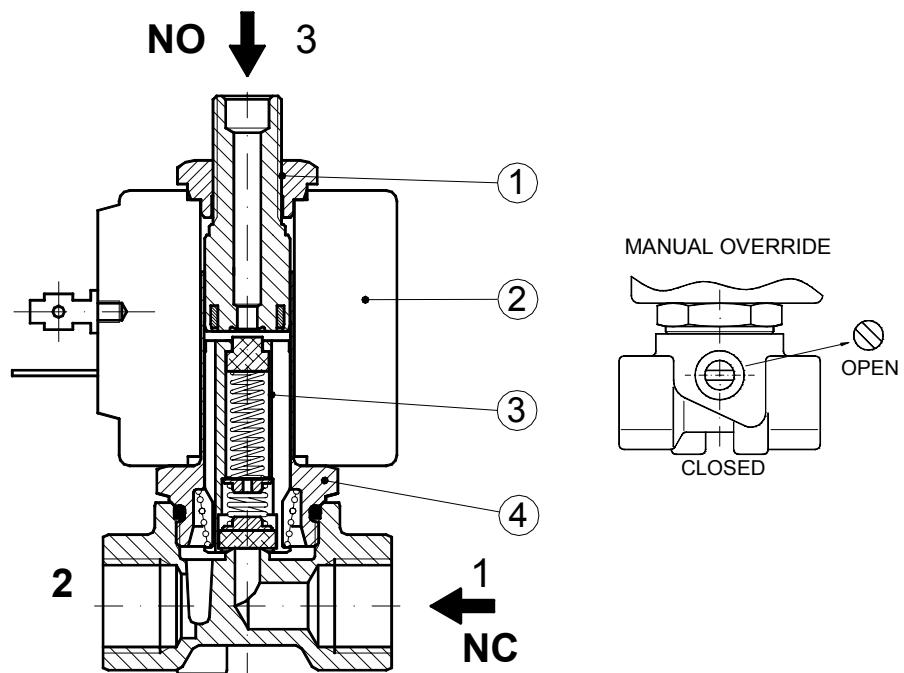
**DESCRIPTION**  
 Class F insulation  
 Voltage tolerance  
 AC +15% -10%  
 DC ± 10%  
 Protection class  
 IP65 with connector fitted  
 IP00 without connector  
 Continuous service ED100%

**OPTIONS**  
 Class H insulation  
 Cable attached  
 Special coil voltages  
 Special coil powers

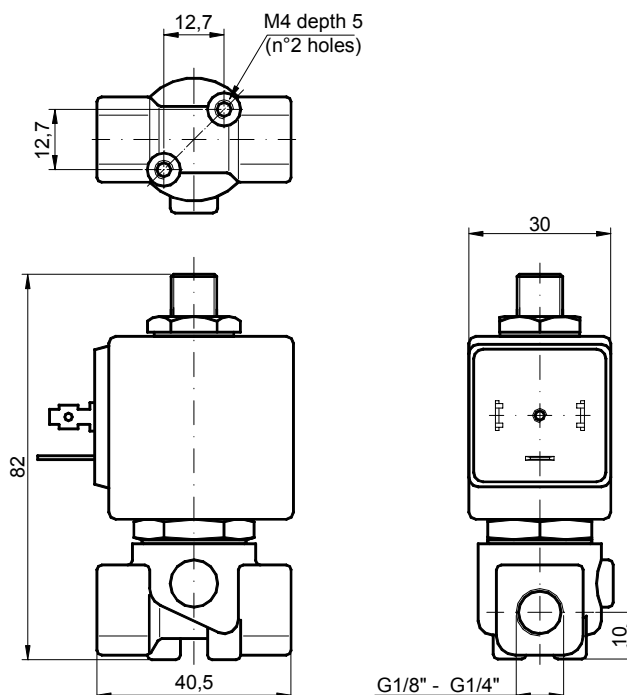


### SPARE PARTS LIST

1. Coil fixing nut
2. Coil
3. Plunger
4. Armature tube with core



### OVERALL DIMENSION



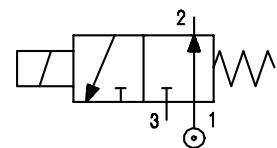
Weight = 0.32 Kg

**DESCRIPTION**

Solenoid valve 3 way normally open  
direct acting poppet type

**CONSTRUCTION**

Body	Brass
Armature tube	Brass
Plunger and core	Stainless steel
Springs	Stainless steel
Seal material	NBR
	FPM
	EPDM



**3**

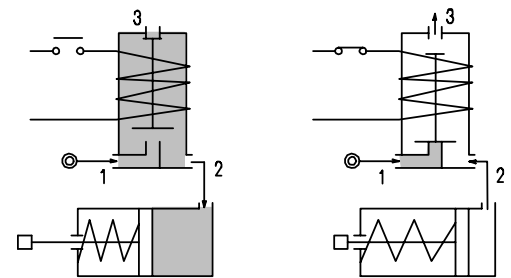
**FEATURES**

Maximum allowable pressure : maximum differential pressure +10%

Maximum fluid viscosity 25cSt (mm<sup>2</sup>/s)

Ambient temperature : with class F coil -10°C +55°C  
with class H coil -10°C +80°C

Universal mounting position



- OPTIONS :** Stainless steel armature tube  
Electroless nickel plating  
Explosion proof coil according to ATEX - EExmII Series 7  
Exhaust port with hosetail connection

CODE ① ②	Connection G ISO 228	Orifice mm		KV m <sup>3</sup> /h	Differential pressure bar			Nominal power			Coil		Seal ①	Temp. range °C
		Inlet	Exh.		Min	Max		AC Inrush	VA Holding	DC Watt	Series	Width		
						AC	DC							
E307A.....12///.....	1/8"	1.2	1.2	0.04	0	12	8	12	8	6.5	3	22	NBR=B	-10 +90
E307A.....15///.....	1/8"	1.5	1.2	0.06	0	9	6	12	8	6.5	3	22	EPDM=E FPM=V	<+140 -10 +130

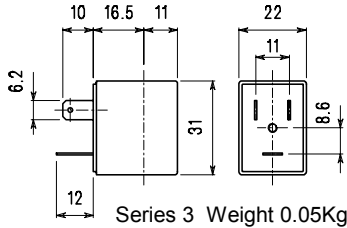
- ① Seal
- ② Coil

Example: E307AV15///30B FPM seal  
Coil 24V 50/60Hz

COILS	Alternating Current ~50/60Hz Volt							Direct Current Volt			Electrical Connection	Connectors
	12	24	48	110	220 230	240	380	12	24	48		
Series 3 Width 22 Code ②	30A	30B	30C	30D	30E	30F	30G	300	301	302	DIN 46244	PG9 code 10348000

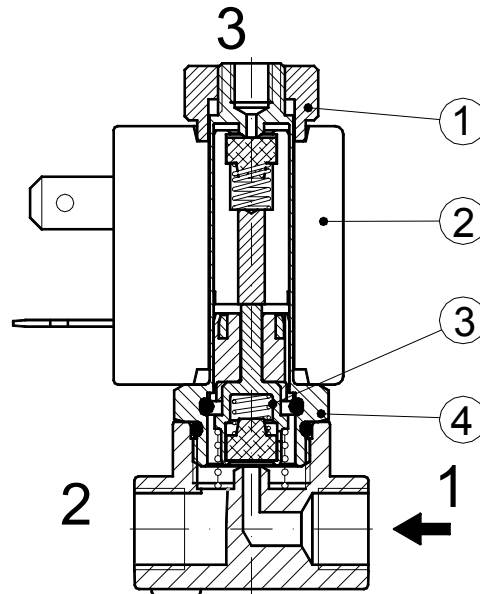
**DESCRIPTION**  
 Class F insulation  
 Voltage tolerance  
 AC +15% -10%  
 DC ± 10%  
 Protection class  
 IP65 with connector fitted  
 IP00 without connector  
 Continuous service ED100%

**OPTIONS**  
 Class H insulation  
 Cable attached  
 Special coil voltages  
 Special coil powers

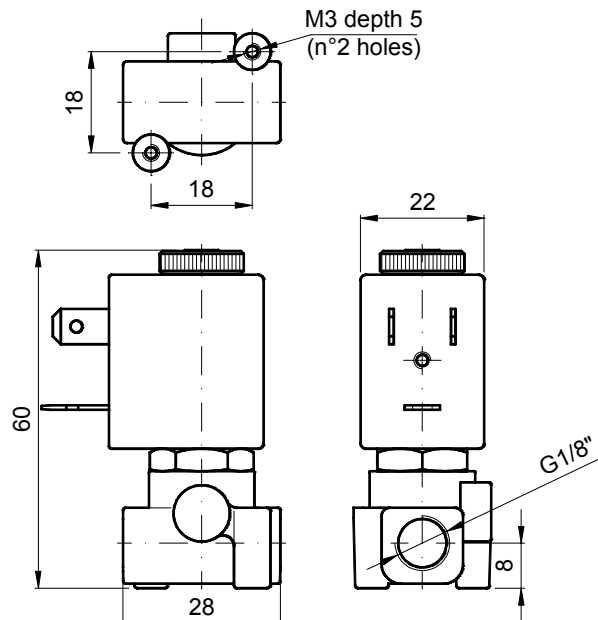


### SPARE PARTS LIST

1. Coil fixing nut
2. Coil
3. Seal assembly
4. Armature tube with core



### OVERALL DIMENSION



Weight = 0.13 Kg

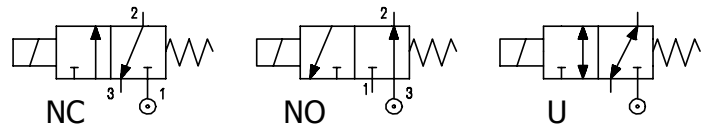


## DESCRIPTION

Solenoid valve 3 way  
direct acting poppet type

## CONSTRUCTION

Body	Stainless steel
Armature tube	Stainless steel
Plunger and core	Stainless steel
Springs	Stainless steel
Seal material	NBR
	FPM
	EPDM



## FEATURES

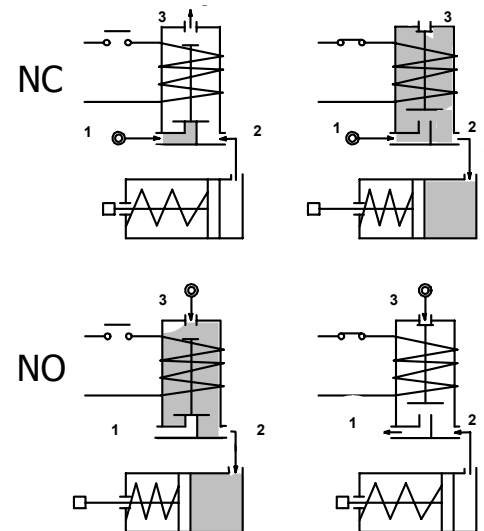
Maximum allowable pressure : maximum differential pressure +10%

Maximum fluid viscosity 25cSt (mm<sup>2</sup>/s)

Ambient temperature : with class F coil -10°C +55°C  
with class H coil -10°C +80°C

Universal mounting position

**OPZIONI :** Silver shading ring



**3**

CODE ① ②	Connection G ISO 228	Orifice mm		KV m <sup>3</sup> /h	Differential pressure bar			Nominal power			Coil		Seal ①	Temp. range °C
		Inlet	Exh.		Min	Max		AC Inrush	VA Holding	DC Watt	Series	Width		
						AC	DC							
<b>NC Normally closed</b>														
E310B.....20///.....	1/4"	2	2.4	0.11	0	13	13	20	15	10	2	30	NBR=B	-10 +90
E310B.....25///.....	1/4"	2.5	2.4	0.16	0	10	10	20	15	10	2	30		
<b>NA Normally open</b>														
E310B.....24/S/.....	1/4"	2.4	2.5	0.16	0	9	9	20	15	10	2	30	EPDM=E	<+140
E310B.....29/S/.....	1/4"	2.9	3	0.20	0	6.5	6.5	20	15	10	2	30		
<b>U Universal</b>														
E310B.....25/G/.....	1/4"	2.5	2.4	0.16	0	5	4	20	15	10	2	30	FPM=V	-10 +130

① Seal

② Coil

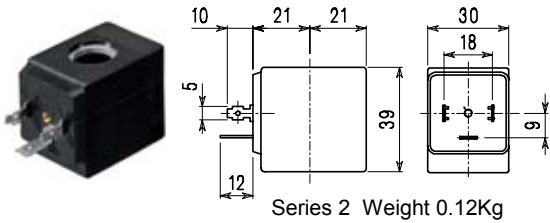
Example: E310BV20///20B FPM seal Coil 24V 50/60Hz NC

E310BB24/S/201 NBR seal Coil 24V DC NO

COIL	Alternating Current ~50/60Hz Volt							Direct Current Volt			Electrical connection	Connectors
	12	24	48	110	220 230	240	380	12	24	48		
Series 2 Width 30 Code ②	20A	20B	20C	20D	20E	20F	20G	200	201	202	DIN 43650A	PG9 code 10349000

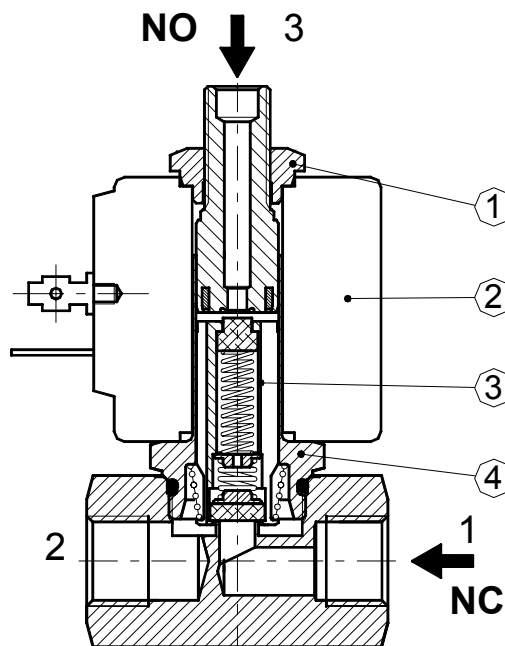
**DESCRIPTION**  
 Class F insulation  
 Voltage tolerance  
 AC +15% -10%  
 DC ± 10%  
 Protection class  
 IP65 with connector fitted  
 IP00 without connector  
 Continuous service ED100%

**OPTIONS**  
 Class H insulation  
 Cable attached  
 Special coil voltages  
 Special coil powers

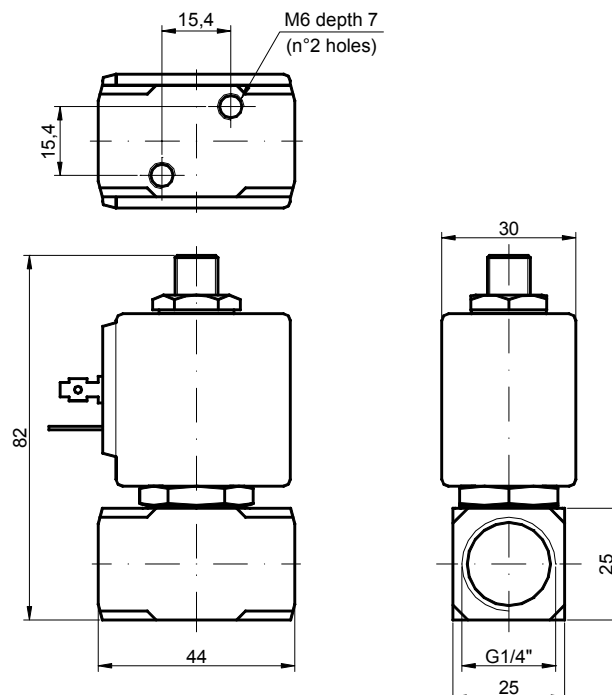


### SPARE PARTS LIST

1. Coil fixing nut
2. Coil
3. Plunger
4. Armature tube with core



### OVERALL DIMENSION



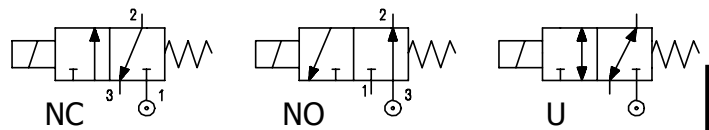
Weight = 0.36 Kg

## DESCRIPTION

Solenoid valve 3 way  
direct acting poppet type

## CONSTRUCTION

Body	Stainless steel
Armature tube	Stainless steel
Plunger and core	Stainless steel
Springs	Stainless steel
Seal material	NBR
	FPM
	EPDM



## FEATURES

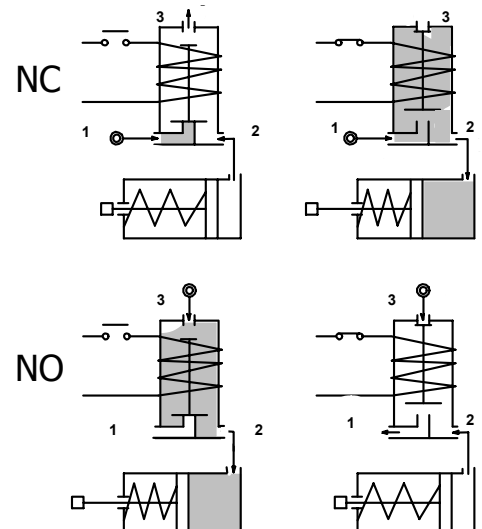
Maximum allowable pressure : maximum differential pressure +10%

Maximum fluid viscosity 25cSt (mm<sup>2</sup>/s)

Ambient temperature : with class F coil -10°C +55°C  
with class H coil -10°C +80°C

Universal mounting position

**OPTIONS :** Silver shading ring  
Explosion proof coil according to ATEX - EExmII Series 7  
Exhaust port with hosedtail connection



CODE ① ②	Connection G ISO 228	Orifice mm		KV m <sup>3</sup> /h	Differential pressure bar			Nominal power			Coil		Seal ①	Temp. range °C
		Inlet	Exh.		Min	Max		AC Inrush	VA Holding	DC Watt	Series	Width		
						AC	DC							
<b>NC Normally closed</b>														
E311A.....12///.....	1/8"	1.2	1.5	0.04	0	15	15	12	8	6.5	3	22	NBR=B	-10 +90
E311A.....15///.....	1/8"	1.5	1.5	0.06	0	10	10	12	8	6.5	3	22		
E311A.....20///.....	1/8"	2	1.7	0.09	0	6	6	12	8	6.5	3	22		
<b>NO Normally open</b>														
E311A.....15/S/.....	1/8"	1.5	1.5	0.06	0	10	10	12	8	6.5	3	22	EPDM=E	<+140
E311A.....17/S/.....	1/8"	1.7	2	0.07	0	6	6	12	8	6.5	3	22		
<b>U Universal</b>														
E311A.....15/G/.....	1/8"	1.5	1.5	0.06	0	6	6	12	8	6.5	3	22	FPM=V	-10 +130

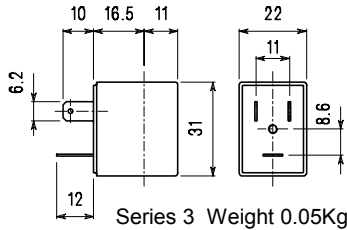
- ① Seal
- ② Coil

Example: E311AV15///30B FPM seal Coil 24V 50/60Hz NC  
E311AB15/S/301 NBR seal Coil 24V DC NO

COIL	Alternating Current ~50/60Hz Volt							Direct Current Volt			Electrical connection	Connectors
	12	24	48	110	220 230	240	380	12	24	48		
Series 3 Width 22 Code ②	30A	30B	30C	30D	30E	30F	30G	300	301	302	DIN 46244	PG9 code 10348000

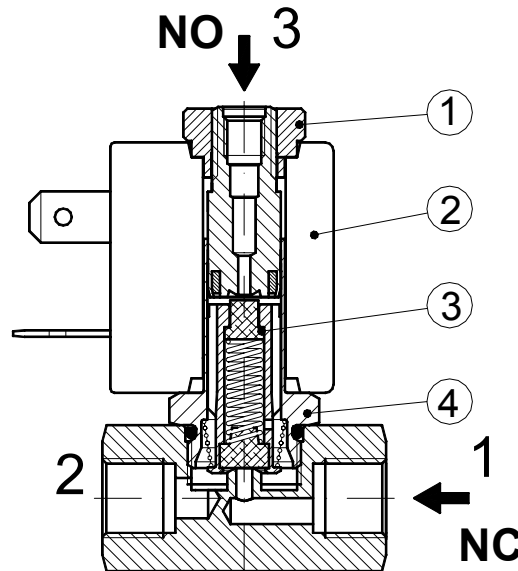
**DESCRIPTION**  
 Class F insulation  
 Voltage tolerance  
 AC +15% -10%  
 DC ± 10%  
 Protection class  
 IP65 with connector fitted  
 IP00 without connector  
 Continuous service ED100%

**OPTIONS**  
 Class H insulation  
 Cable attached  
 Special coil voltages  
 Special coil powers

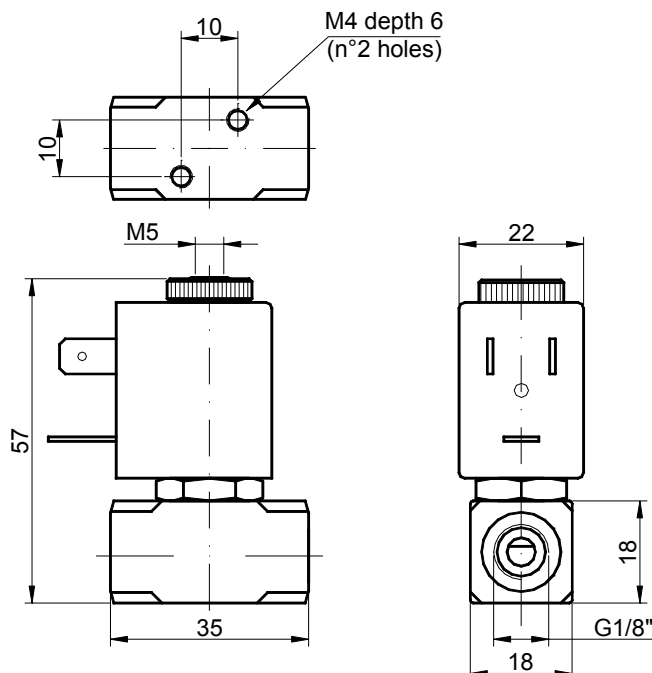


### SPARE PARTS LIST

1. Coil fixing nut
2. Coil
3. Plunger
4. Armature tube with core



### OVERALL DIMENSION



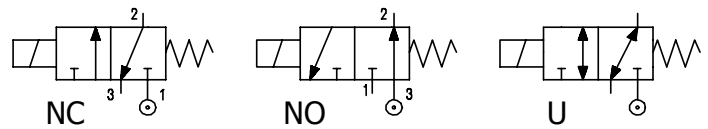
Weight = 0.15 Kg

## DESCRIPTION

Solenoid valve 3 way  
direct acting poppet type

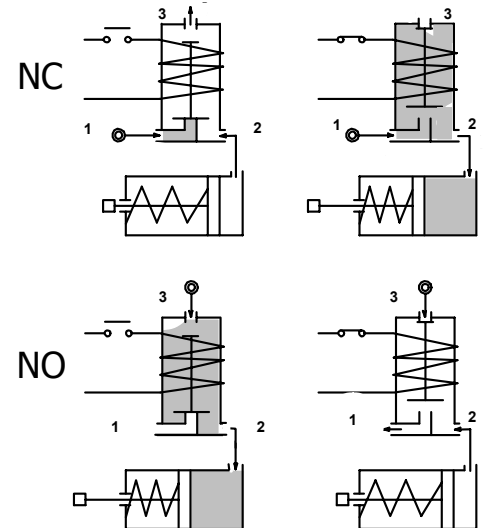
## CONSTRUCTION

Body	Brass
Armature tube	Brass
Plunger and core	Stainless steel
Springs	Stainless steel
Seal material	NBR
	FPM
	EPDM



## FEATURES

- Maximum allowable pressure : maximum differential pressure +10%
- Maximum fluid viscosity 25cSt (mm<sup>2</sup>/s)
- Ambient temperature : with class F coil -10°C +55°C  
with class H coil -10°C +80°C
- Universal mounting position



- OPTIONS :**
- Stainless steel armature tube
  - Electroless nickel plating
  - Explosion proof coil according to ATEX - EExmII Series 7
  - Exhaust port with hosetail connection

CODE ① ②	Flange	Orifice mm		KV m³/h	Differential pressure bar			Nominal powers			Coil		Seal ①	Temp. range °C
		Inlet	Exh.		Min	Max		AC Inrush	VA Holding	DC Watt	Series	Width		
						AC	DC							
<b>NC Normally closed</b>														
E312X.....12///.....	Q 25	1.2	1.5	0.04	0	15	15	12	8	6.5	3	22	NBR=B	-10 +90
E312X.....15///.....	Q 25	1.5	1.7	0.06	0	10	10	12	8	6.5	3	22		
<b>NO Normally open</b>														
E312X.....15/S/.....	Q 25	1.5	1.5	0.06	0	10	10	12	8	6.5	3	22	EPDM=E	<+140
<b>U Universal</b>														
E312X.....10/G/.....	Q 25	1	1	0.028	0	10	10	12	8	6.5	3	22	FPM=V	-10 +130

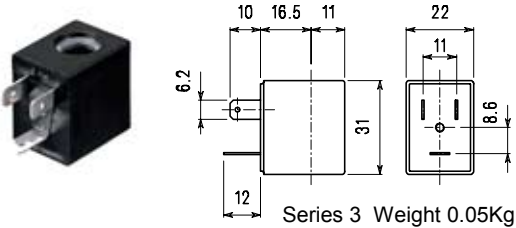
① Seal Example: E312XV15///30B FPM seal Coil 24V 50/60Hz NC  
 ② Coil E312XB15/S/301 NBR seal Coil 24V DC NO

P.S. Solenoid valve supplied without fixing screws

COILS	Alternating Current ~50/60Hz Volt							Direct Current Volt			Electrical connection	Connectors
	12	24	48	110	220 230	240	380	12	24	48		
Series 3 Width 22 Code ②	30A	30B	30C	30D	30E	30F	30G	300	301	302	DIN 46244	PG9 code 10348000

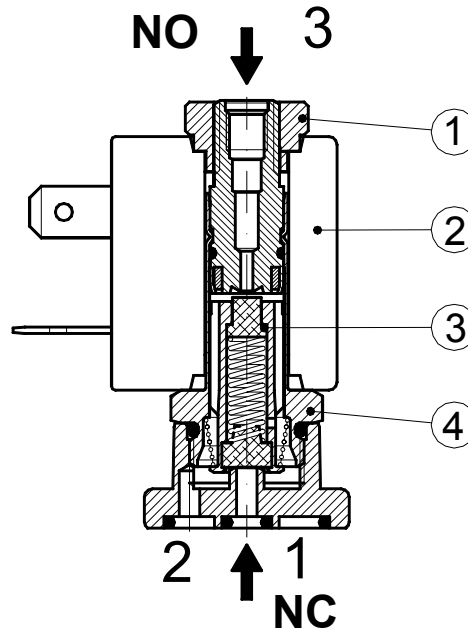
**DESCRIPTION**  
 Class F insulation  
 Voltage tolerance  
 AC +15% -10%  
 DC ± 10%  
 Protection class  
 IP65 with connector fitted  
 IP00 without connector  
 Continuous service ED100%

**OPTIONS**  
 Class H insulation  
 Cable attached  
 Special coil voltages  
 Special coil powers

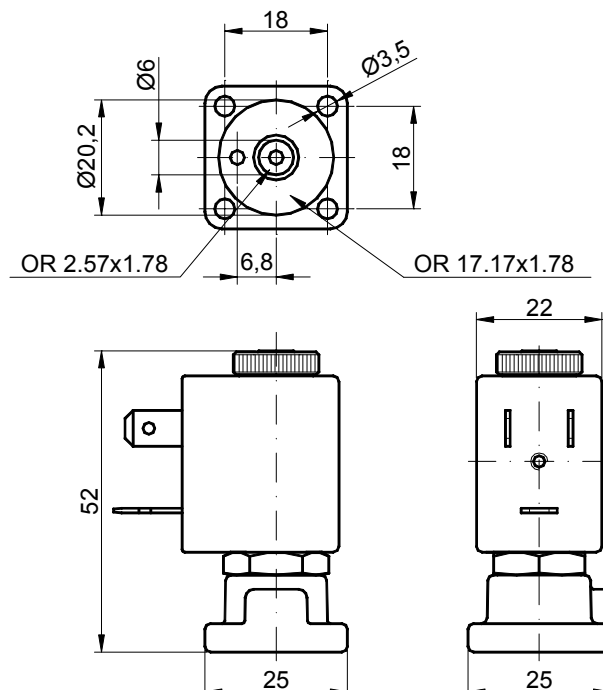


### SPARE PARTS LIST

1. Coil fixing nut
2. Coil
3. Plunger
4. Armature tube with core



### OVERALL DIMENSION



Weight = 0.12 Kg

**DESCRIPTION**

Solenoid valve 3 way normally open  
direct acting poppet type

**CONSTRUCTION**

Body	Brass
Armature tube	Brass
Plunger and core	Stainless steel
Springs	Stainless steel
Seal material	NBR
	FPM
	EPDM



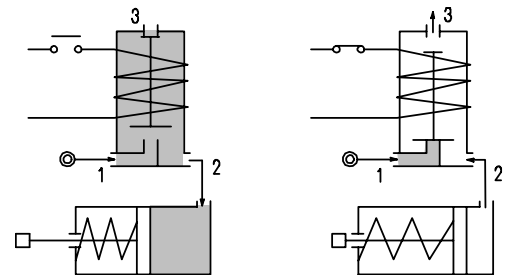
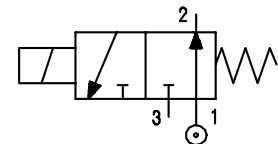
**FEATURES**

Maximum allowable pressure : maximum differential pressure +10%

Maximum fluid viscosity 25cSt (mm<sup>2</sup>/s)

Ambient temperature : with class F coil -10°C +55°C  
with class H coil -10°C +80°C

Universal mounting position



**3**

- OPTIONS :** Stainless steel armature tube  
Electroless nickel plating  
Explosion proof coil according to ATEX - EExmII Series 7  
Exhaust port with hosetail connection

CODE ① ②	Flange	Orifice mm		KV m <sup>3</sup> /h	Differential pressure bar			Nominal power			Coil		Seal ①	Temp. range °C
		Inlet	Exh.		Min	Max		AC Inrush	VA Holding	DC Watt	Series	Width		
						AC	DC							
E313X.....12///.....	Q 25	1.2	1.2	0.04	0	12	8	12	8	6.5	3	22	NBR=B EPDM=E FPM=V	-10 +90 <+140 -10 +130
E313X.....15///.....	Q 25	1.5	1.2	0.06	0	9	6	12	8	6.5	3	22		

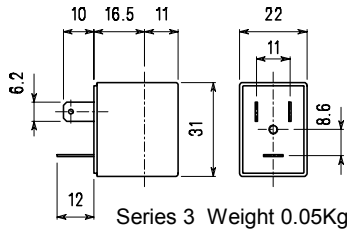
① Seal Example: E313XV15///30B FPM seal  
② Coil Coil 24V 50/60Hz

P.S. Solenoid valve supplied without fixing screws

COILS	Alternating Current ~50/60Hz Volt							Direct Current Volt			Electrical connection	Connectors
	12	24	48	110	220 230	240	380	12	24	48		
Series 3 Width 22 Code ②	30A	30B	30C	30D	30E	30F	30G	300	301	302	DIN 46244	PG9 code 10348000

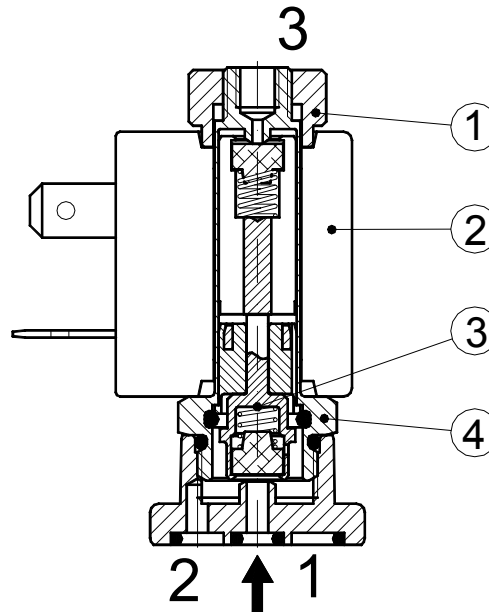
**DESCRIPTION**  
 Class F insulation  
 Voltage tolerance  
 AC +15% -10%  
 DC ± 10%  
 Protection class  
 IP65 with connector fitted  
 IP00 without connector  
 Continuous service ED100%

**OPTIONS**  
 Class H insulation  
 Cable attached  
 Special coil voltages  
 Special coil powers

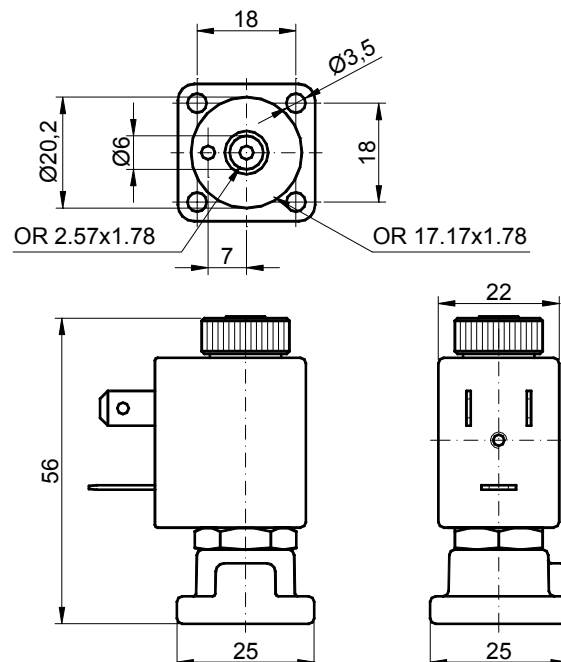


### SPARE PARTS LIST

1. Coil fixing nut
2. Coil
3. Plunger
4. Armature tube with core



### OVERALL DIMENSION



Weight = 0.12 Kg

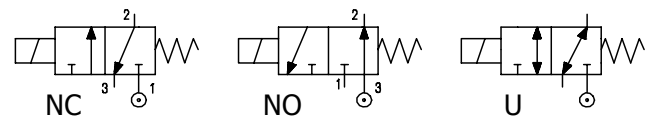


## DESCRIPTION

Solenoid valve 3 way  
direct acting poppet type

## CONSTRUCTION

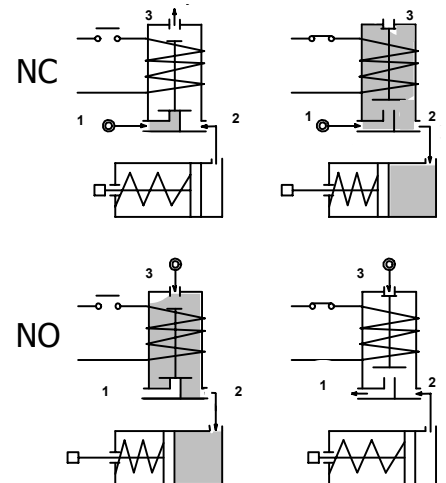
Body	Brass
Armature tube	Stainless steel
Plunger and core	Stainless steel
Springs	Stainless steel
Seal material	NBR FPM EPDM



## FEATURES

- Maximum allowable pressure : maximum differential pressure +10%
- Maximum fluid viscosity 25cSt (mm<sup>2</sup>/s)
- Ambient temperature : with class F coil -10°C +55°C  
with class H coil -10°C +80°C
- Universal mounting position

- OPTIONS :** Manual override  
Electroless nickel plating  
Stainless steel seat



**3**

CODE ① ②	Flange	Orifice mm		KV m <sup>3</sup> /h	Differential pressure bar			Nominal power			Coil		Seal ①	Temp. range °C
		Inlet	Exh.		Min	Max		AC Inrush	VA Holding	DC Watt	Series	Width		
						AC	DC							
<b>NC Normally closed</b>														
E314X.....15///.....	Q 32	1.5	2.4	0.07	0	20	20	20	15	10	2	30	NBR=B	-10 +90
E314X.....20///.....	Q 32	2	2.4	0.11	0	13	13	20	15	10	2	30		
E314X.....25///.....	Q 32	2.5	2.4	0.16	0	10	10	20	15	10	2	30		
<b>NO Normally open</b>														
E314X.....24/S/.....	Q 32	2.4	2.5	0.16	0	9	9	20	15	10	2	30	EPDM=E	<+140
E314X.....29/S/.....	Q 32	2.9	3	0.20	0	6.5	6.5	20	15	10	2	30		
<b>U Universal</b>														
E314X.....25/G/.....	Q 32	2.5	2.4	0.16	0	5	4	20	15	10	2	30	FPM=V	-10 +130

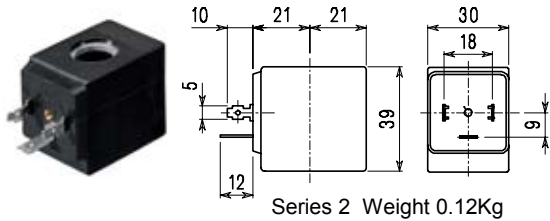
① Seal Example: E314XV15///20B FPM seal Coil 24V 50/60Hz NC  
② Coil E314XB24/S/201 NBR seal Coil 24V DC NO

P.S. Solenoid valve supplied without fixing screws

COIL	Alternating Current ~50/60Hz Volt							Direct Current Volt			Electrical connection	Connectors
	12	24	48	110	220 230	240	380	12	24	48		
Series 2 Width 30 Code ②	20A	20B	20C	20D	20E	20F	20G	200	201	202	DIN 43650A	PG9 code 10349000

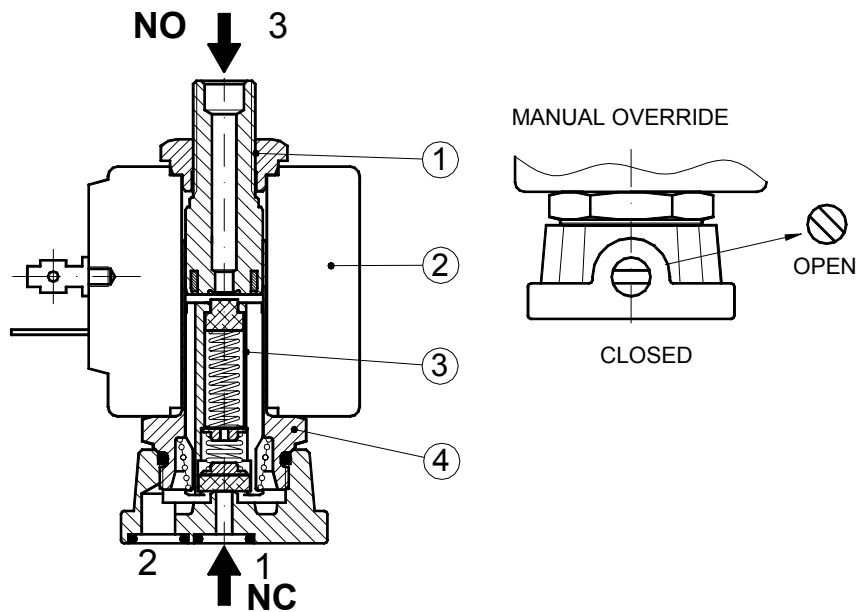
**DESCRIPTION**  
 Class F insulation  
 Voltage tolerance  
 AC +15% -10%  
 DC ± 10%  
 Protection class  
 IP65 with connector fitted  
 IP00 without connector  
 Continuous service ED100%

**OPTIONS**  
 Class H insulation  
 Cable attached  
 Special coil voltages  
 Special coil powers

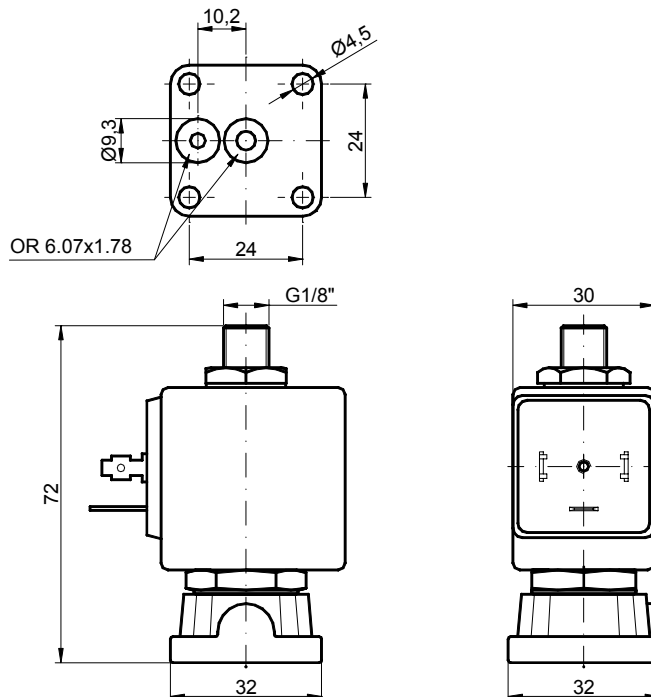


### SPARE PARTS LIST

1. Coil fixing nut
2. Coil
3. Plunger
4. Armature tube with core



### OVERALL DIMENSION



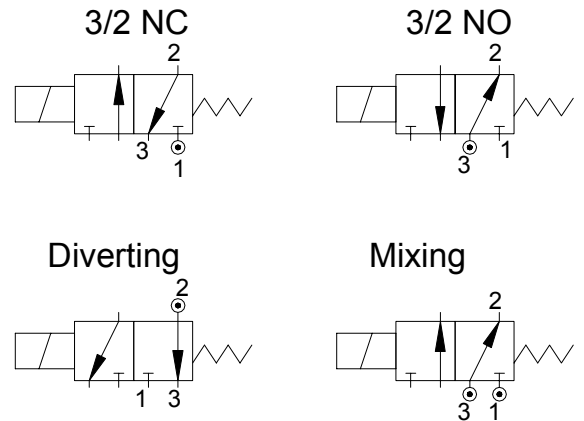
Weight = 0.25 Kg

### DESCRIPTION

Solenoid valve 3 way direct acting poppet type.  
 The balanced seal and the special construction allows a big flow.  
 The solenoid valve can be used as normally closed, normally open, mixer or diverter.

### CONSTRUCTION

Body	Anodized aluminium
Armature tube	Stainless steel
Plunger and core	Stainless steel
Springs	Stainless steel
Seal	FPM



**3**

### FEATURES

Maximum allowable pressure : 15 bar  
 Maximum fluid viscosity 25cSt (mm<sup>2</sup>/s)  
 Ambient temperature : -10°C +80°C  
 Universal mounting position

**OPTIONS :** Special version for higher differential pressure

CODE ②	Connection G ISO 228	Orifice mm	KV m <sup>3</sup> /h	Differential pressure bar			Nominal power			Coil		Seal	Temp. range °C
				Min	Max		AC Inrush	VA Holding	DC Watt	Series	Width		
					AC	DC							
E320BV75///.....	1/4"	7.5	0.64	0	5	-	40	30	-	5	36	FPM=V	-10 +130
D320BV75///.....	1/4"	7.5	0.64	0	-	5	-	-	27	5	36		

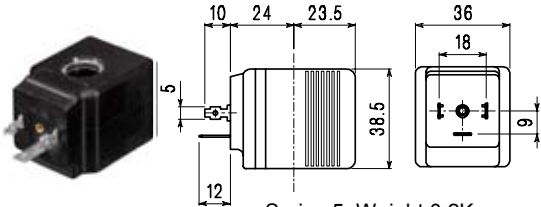
② Coil

Example: E320BV75///52E FPM seal Coil 230V 50-60Hz

COILS	Alternating Current ~50/60Hz Volt							Direct Current Volt			Electrical connection	Connectors
	12	24	48	110	220 230	240	380	12	24	48		
Series 5 Width 36 Code ②	52A	52B	52C	52D	52E	52F	52G	520	521	522	DIN 43650A	PG11 code 10349001

**DESCRIPTION**  
 Class H insulation  
 Voltage tolerance  
 AC +15% -10%  
 DC ± 10%  
 Protection class  
 IP65 with connector fitted  
 IP00 without connector  
 Continuous service ED100%

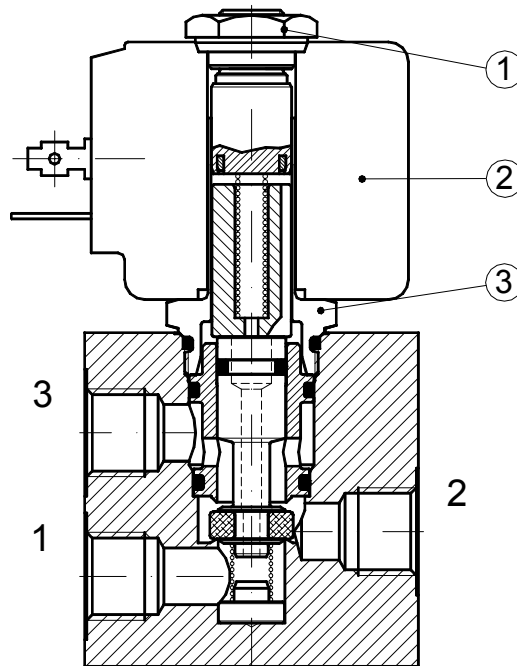
**OPTIONS**  
 Cable attached  
 Special coil powers  
 Special coil voltages



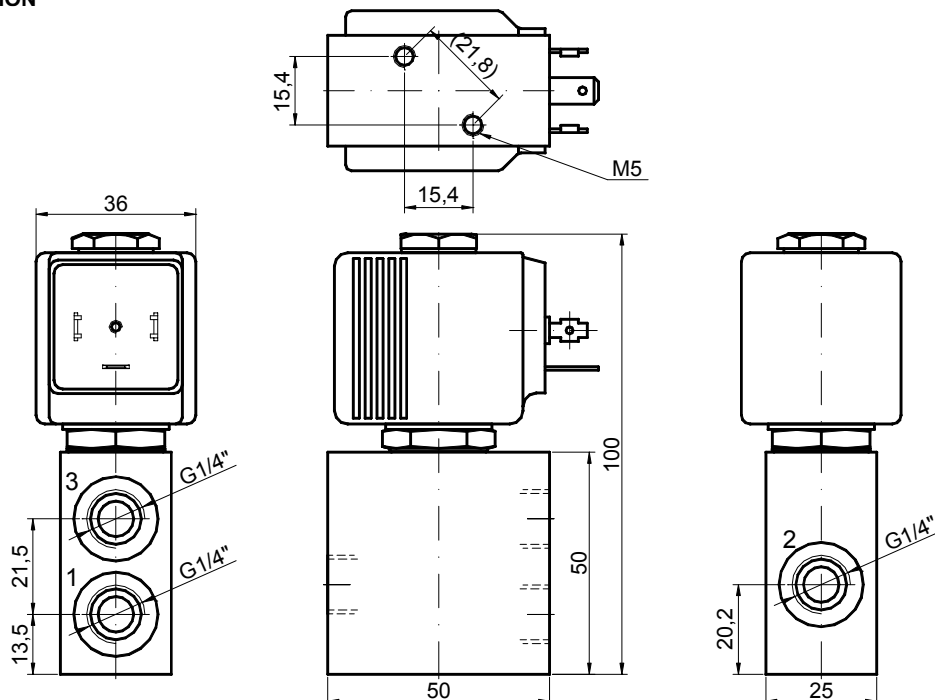
Series 5 Weight 0.2Kg

### SPARE PARTS LIST

1. Coil fixing nut
2. Coil
3. Armature tube with core



### OVERALL DIMENSION



Weight = 0.43 Kg

**DESCRIPTION**

Solenoid valve 3 way direct acting with dry armature.  
No metal parts in contact with the media.

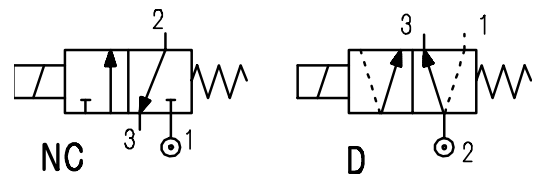
**CONSTRUCTION**

Body Acetal copolymer  
Seal material NBR



**FEATURES**

Maximum allowable pressure 0.5 bar  
Maximum fluid viscosity 25cSt (mm<sup>2</sup>/s)  
Ambient temperature: -10°C +45°C  
Maximum fluid temperature +50°C  
Universal mounting position



**3**

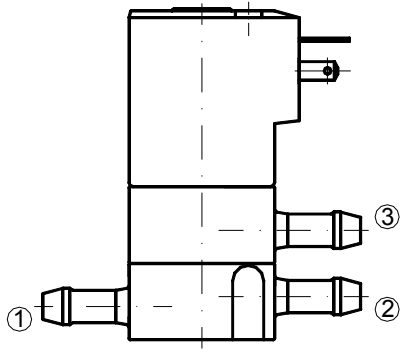
**ELECTRICAL OPERATING FEATURES**

Duty cycle : ED100%  
Insulation class : F  
Voltage tolerance : ±5%  
Protection class to IP65 with connector fitted

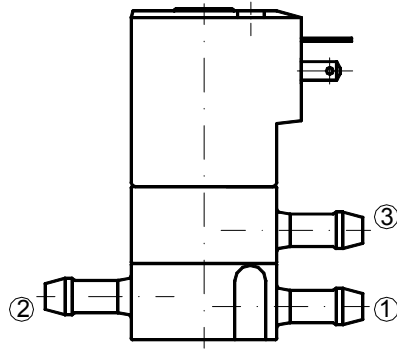
CODE	Hosetail connection	Orifice mm	KV m <sup>3</sup> /h	Differential pressure bar		Nominal power			Voltage		Connector
				Min	Max	Alternating current VA		Direct current Watt	AC	DC	
						Inrush	Holding				
				<b>NC Normally closed</b>		<b>D Diverting</b>					
① E330PB32/.../106620	ø5.5	3.2	0.2	0	0.4	6.5	4.5	---	230	---	PG7 10348040
① D330PB32/.../111140	ø5.5	3.2	0.2	0	0.4	---	---	4	---	12	
① D330PB32/.../111150	ø5.5	3.2	0.2	0	0.4	---	---	4	---	24	

① Configuration

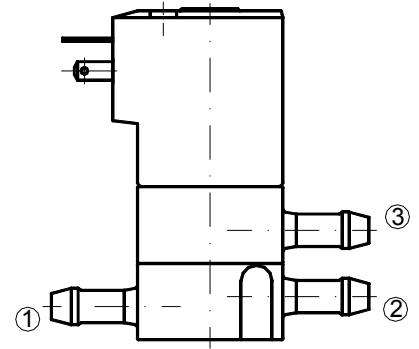
P.S. Solenoid valves and coils are not supplied separately



code /  
3/2 NC



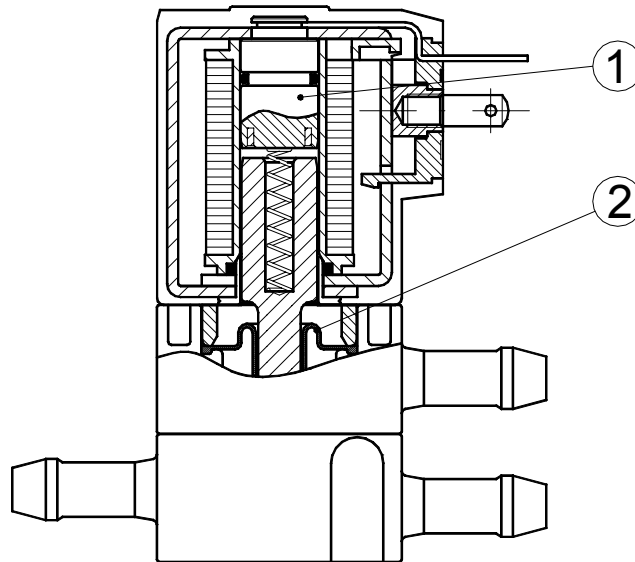
code D  
DIVERTING



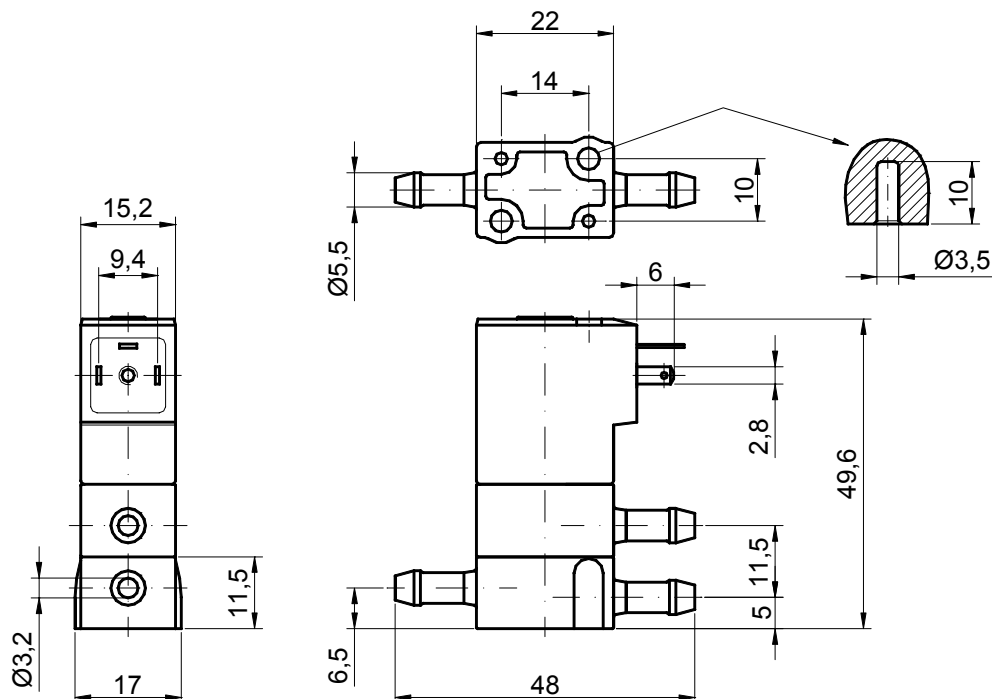
code R

### SPARE PARTS LIST

- 1. Coil
- 2. Diaphragm



### OVERALL DIMENSION



Weight = 0.04 Kg

## DESCRIPTION

Solenoid valve 3 way normally closed direct acting poppet type, suitable for food application and all compatible fluids.

## CONSTRUCTION

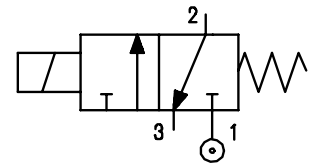
Body	Thermoplastic polymer: NSF, WRC, KTW, FDA certified
Armature tube	Brass chemically nickel plated
Plunger and core	Stainless steel
Springs	Stainless steel
Seal material	NBR food contact certified FPM food contact certified EPDM food contact certified



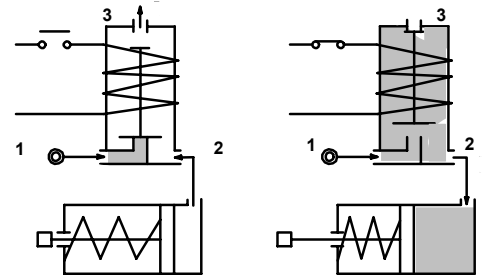
## FEATURES

- Maximum allowable pressure 10 bar
- Maximum fluid viscosity 25cSt (mm<sup>2</sup>/s)
- Ambient temperature : with class F coil -10°C +55°C  
with class H coil -10°C +80°C
- Universal mounting position

**OPTIONS :** Stainless steel armature tube  
Type N connection without nut



3



CONNECTIONS					
K	N	P	W ③	Y	Z
<b>SPIGGOT</b>	<b>G1/8" male thread with NUT for flexible and semiflexible pipes</b>	<b>HOSETAIL for flexible pipes</b>	<b>COMPRESSION for flexible and semiflexible pipes</b>	<b>PUSH IN for semiflexible pipes Øext.6</b>	<b>PUSH IN for semiflexible pipes Øext.4</b>

CODE ① ②	Connection *	Orifice mm	KV m <sup>3</sup> /h	Differential pressure bar			Nominal power			Coil		Seal ①	Temp. range °C
				Min	Max		AC Inrush	VA Holding	DC Watt	Series	Width		
					AC	DC							
E335*.....15///.....	K-N-P-W-Y-Z	1.5	0.06	0	9	9	12	8	6.5	3	22	NBR=A EPDM=E FPM=V	-10 +90 <+140 -10 +130

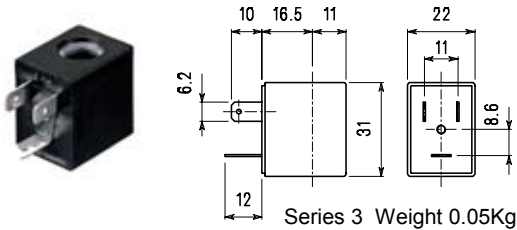
- ① Seal
- ② Coil
- ③ Only for connection "W"

Example: E335KA20///30B NBR seal SPIGGOT connection  
Coil 24V 50/60Hz  
E335W..../1/....

COILS	Alternating current ~50/60Hz Volt							Direct Current Volt			Electrical connection	Connectors
	12	24	48	110	220 230	240	380	12	24	48		
Series 3 Width 22 Code ②	30A	30B	30C	30D	30E	30F	30G	300	301	302	DIN 46244	PG9 code 10348000

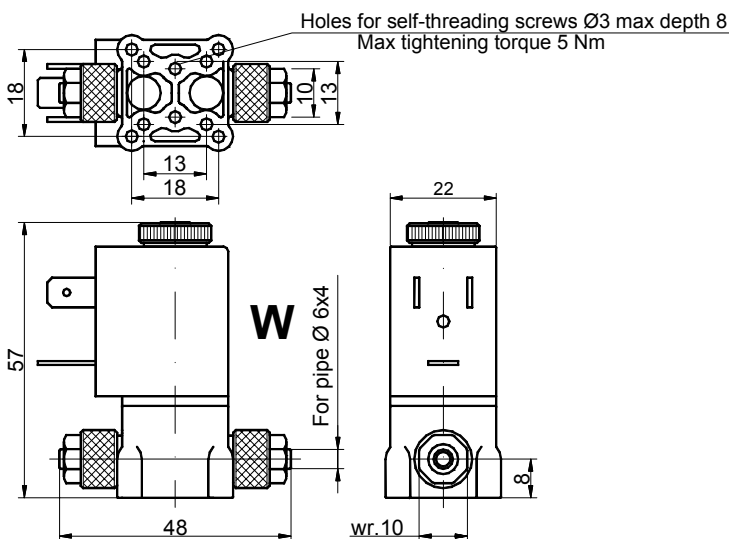
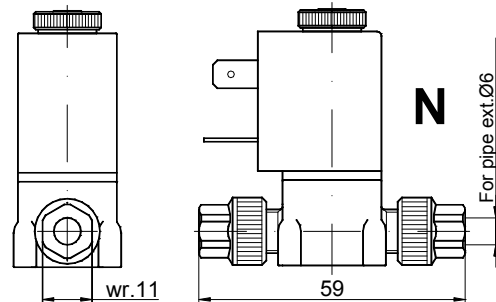
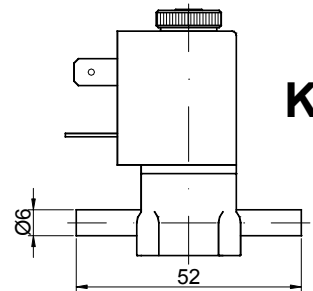
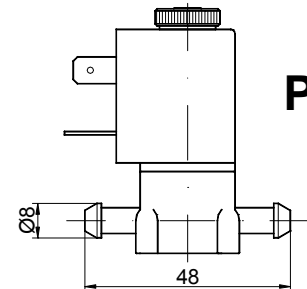
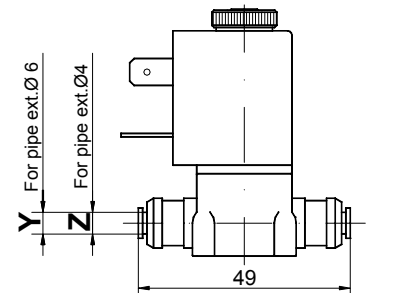
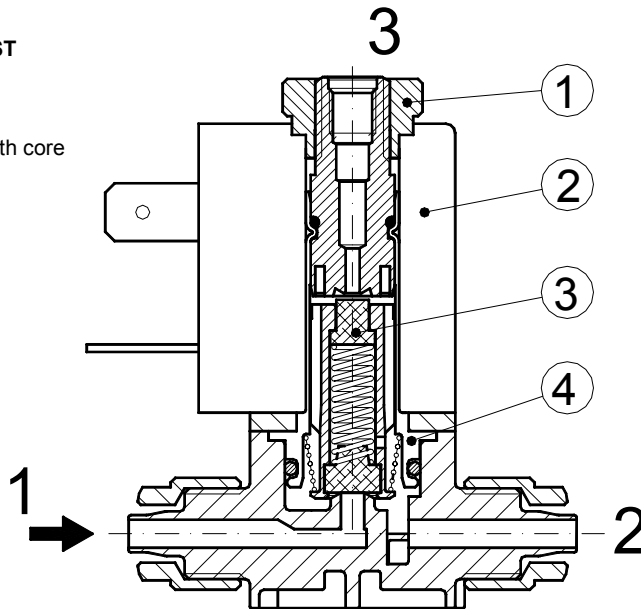
**DESCRIPTION**  
 Class F insulation  
 Voltage tolerance  
 AC +15% -10%  
 DC ± 10%  
 Protection class  
 IP65 with connector fitted  
 IP00 without connector  
 Continuous service ED100%

**OPTIONS**  
 Class H insulation  
 Cable attached  
 Special coil power  
 Special coil voltages



### SPARE PARTS LIST

1. Coil fixing nut
2. Coil
3. Plunger
4. Armature tube with core



Nut Max torque 2 Nm

Screw the nut with wrench 11 up to the sliding on the hexagon (TORQUE LIMITING DEVICE)

Weight = 0.10 Kg



## DESCRIPTION

Solenoid valve 3 way normally open direct acting poppet type, suitable for food application and all compatible fluids.

## CONSTRUCTION

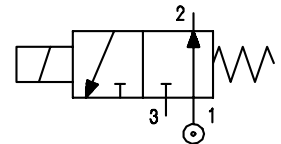
Body	Thermoplastic polymer: NSF, WRC, KTW, FDA certified
Armature tube	Brass
Plunger and core	Stainless steel
Springs	Stainless steel
Seal material	NBR food contact certified FPM food contact certified EPDM food contact certified



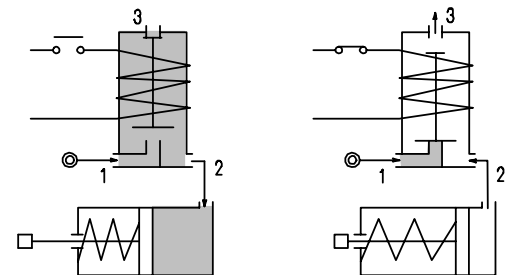
## FEATURES

Maximum allowable pressure 10 bar  
 Maximum fluid viscosity 25cSt (mm<sup>2</sup>/s)  
 Ambient temperature : with class F coil -10°C +55°C  
 with class H coil H -10°C +80°C  
 Universal mounting position

**OPTIONS :** Stainless steel armature tube  
 Chemically nickel-plated armature tube  
 Type N connection without nut



**3**



CONNECTIONS					
K	N	P	W ③	Y	Z
<b>SPIGGOT</b>	<b>G1/8" male thread with NUT for flexible and semiflexible pipes</b>	<b>HOSETAIL for flexible pipes</b>	<b>COMPRESSION for flexible and semiflexible pipes</b>	<b>PUSH IN for semiflexible pipes Øext.6</b>	<b>PUSH IN for semiflexible pipes Øext.4</b>

CODE ① ②	Connections *	Orifice mm	KV m <sup>3</sup> /h	Differential pressure bar			Nominal power			Coil		Seal ①	Temperature range °C
				Min	Max		AC Inrush	VA Holding	DC Watt	Series	Width		
					AC	DC							
<b>E337*.....15///.....</b>	<b>K-N-P-W-Y-Z</b>	<b>1.5</b>	<b>0.06</b>	<b>0</b>	<b>9</b>	<b>6</b>	<b>12</b>	<b>8</b>	<b>6.5</b>	<b>3</b>	<b>22</b>	<b>NBR=A</b> <b>EPDM=E</b> <b>FPM=V</b>	<b>-10 +90</b> <b>&lt;+140</b> <b>-10 +130</b>

- ① Seal Es. E337KA20///30B NBR seal Spigot connection
- ② Coil Coil 24V 50/60Hz
- ③ Only for connection "W" E337W..../1/....



## DESCRIPTION

Solenoid valve 3 way  
direct acting poppet type

## CONSTRUCTION

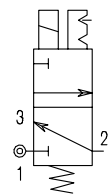
Body Acetal copolymer  
Internal parts Acetal copolymer – Stainless steel  
Seal material NBR



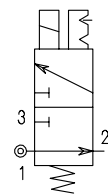
## FEATURES

Fixing method : M3 screws  
Max torque 0.5Nm  
Universal mounting position  
Fluid temperature : 50°C max  
Ambient temperature : -15°C +50°C  
Fluid : Air, Neutral gases  
Response time : 10-15ms  
Manual override : Enclosed bi-stable function

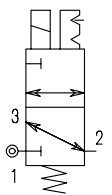
3/2 NC



3/2 NO



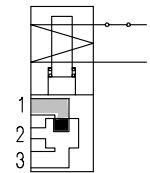
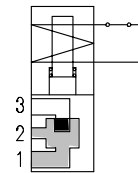
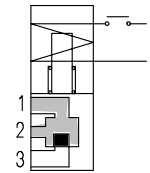
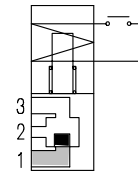
3/2 U



3

## ELECTRICAL OPERATING FEATURES

Duty cycle : ED100%  
Insulation class : F (155°C)  
Voltage tolerance : ±10%  
Protection class : Cables IP65  
Fast-on IP00  
With connector fitted IP65  
Electrical connection : Cables (L=300mm)  
AMP 2.8x0.5  
DIN 43650/C



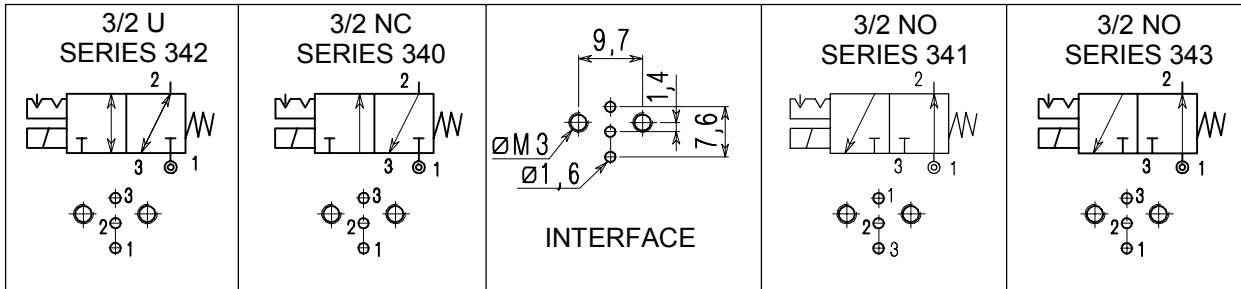
Connection	Orifice mm		Pa=6bar NI/1' Nominal rate +p=1bar	Differential pressure bar		Power consumption at 20°C			CODE	
	1→2	2→3		Min	Max	Alternating current VA		Direct current Watt	Alternating current	Direct current
<b>NC Normally closed</b>										
Flange	0.8	0.9	23	0	10	---	---	1.5	E340XB08	D340XB08
Flange	1.2	1.3	29	0	10	3.6	2.5	2.5	E340XB12	D340XB12
Flange	1.5	1.6	43	0	6	3.6	2.5	2.5	E340XB15	D340XB15
<b>NA Normally open</b>										
Flange	1	1.2	26	0	8	3.6	2.5	2.5	E341XB10	D341XB10
Flange	1	1.2	26	0	8	3.6	2.5	2.5	E343XB10	D343XB10
<b>U Universal</b>										
Flange	1.5	1.6	43	0	2.5	3.6	2.5	2.5	E342XB15	D342XB15

## COIL CODE

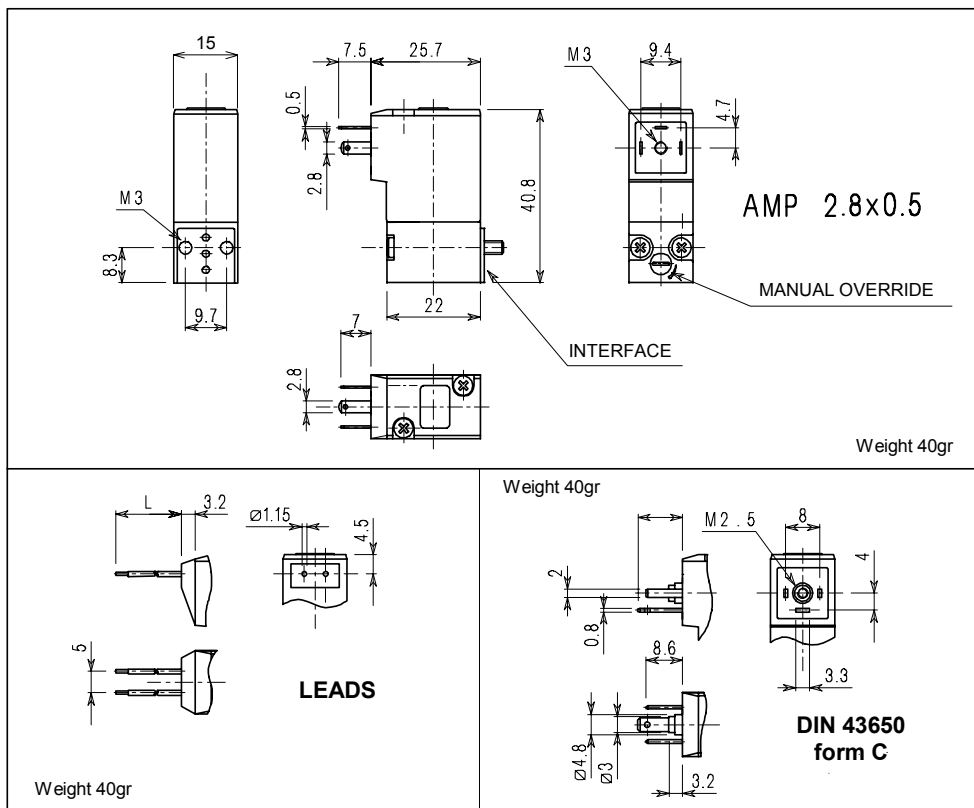
VOLTAGE	AMP 2.8 x 0.5			DIN 43650 C form			CABLE		
	50/60Hz	1.5WDC	2.5WDC	50/60Hz	1.5WDC	2.5WDC	50/60Hz	1.5WDC	2.5WDC
12	---	106970	106950	---	109020	109040	---	107010	106990
24	107030	106980	106960	108990	109030	109050	107040	107020	107000
110	107060	---	---	109000	---	---	---	---	---
220/230	107050	---	---	109010	---	---	---	---	---

P.S. 1,5W power available on Ø0.8 orifice only

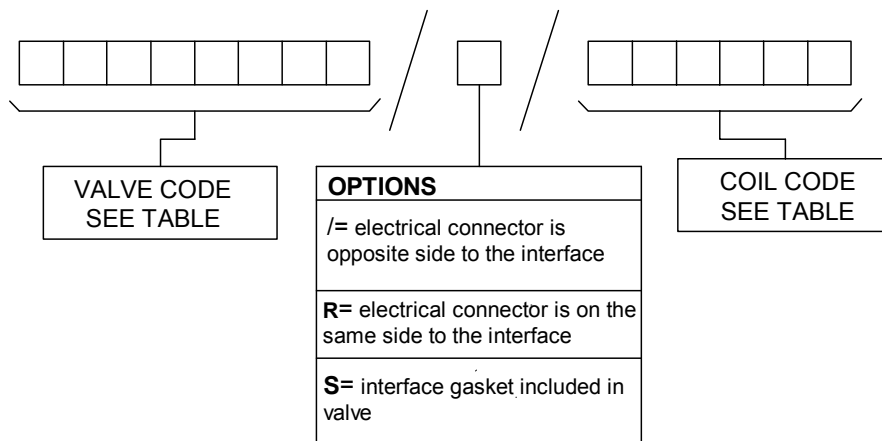
## CONNECTIONS



## OVERALL DIMENSIONS



## TYPE NUMBER COMPOSITION



Example :D340XB12///106960 3way NC-24V DC 2,5W. Electrical connection AMP2.8x0.5 is on the opposite side of the interface.