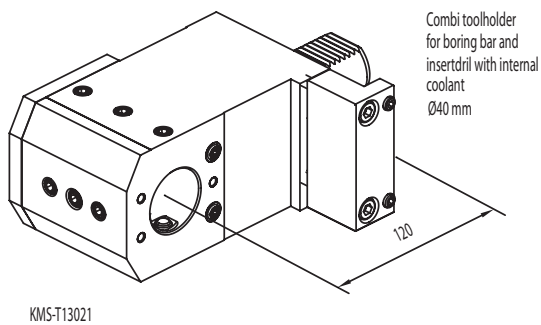
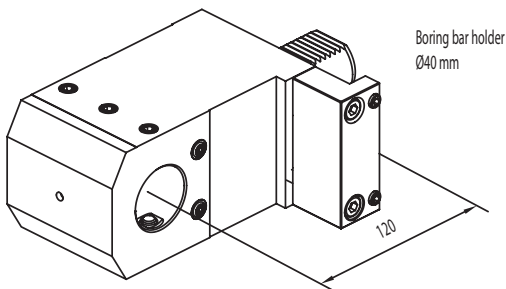
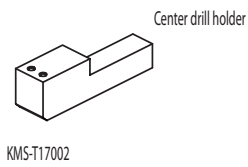
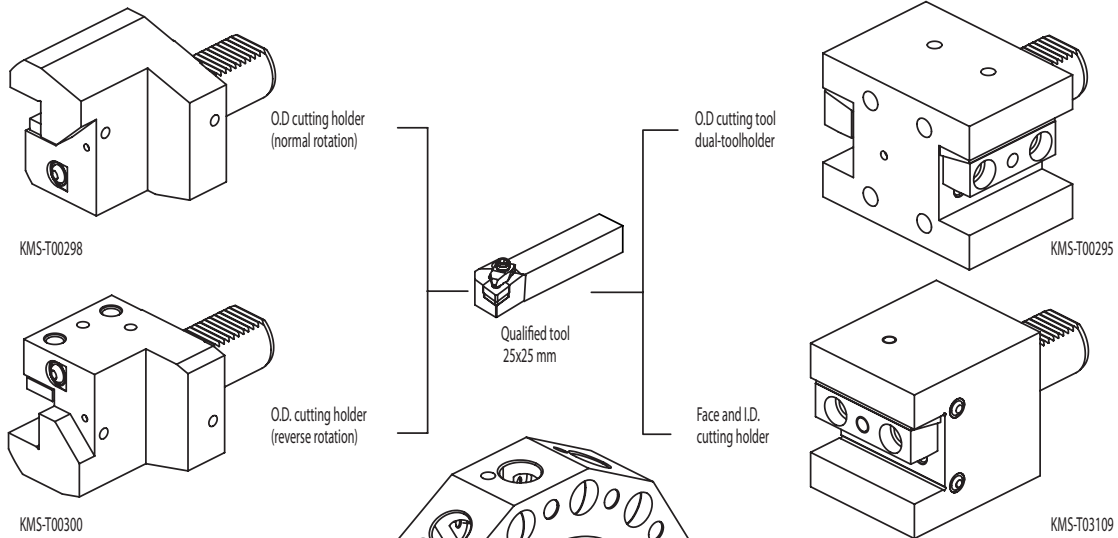




KINTEK



ACCESSORIES

Drill socket

- KMS-T22042 <MT3>
- KMS-T22046 <MT2>
- KMS-T22066 <MT1>

Boring bar sleeve

- KMS-T20098 (Ø32 mm)
- KMS-T20096 (Ø25 mm)
- KMS-T20094 (Ø20 mm)
- KMS-T20092 (Ø16 mm)
- KMS-T20090 (Ø12 mm)
- KMS-T20088 (Ø10 mm)
- KMS-T20086 (Ø8 mm)

Boring bar sleeve with internal coolant

- KMS-T20098-A (Ø32 mm)
- KMS-T20096-A (Ø25 mm)
- KMS-T20094-A (Ø20 mm)
- KMS-T20092-A (Ø16 mm)
- KMS-T20090-A (Ø12 mm)
- KMS-T20088-A (Ø10 mm)
- KMS-T20086-A (Ø8 mm)

- KMS-T20196-A (Ø20 mm)
- KMS-T20194-A (Ø16 mm)
- KMS-T20110-A (Ø12 mm)
- KMS-T20108-A (Ø10 mm)
- KMS-T20106-A (Ø8 mm)

Drill socket with internal coolant

- KMS-T22042-A (MT3)
- KMS-T22044-A (MT4)
- KMS-T22046-A (MT2)
- KMS-T22066-A (MT1)

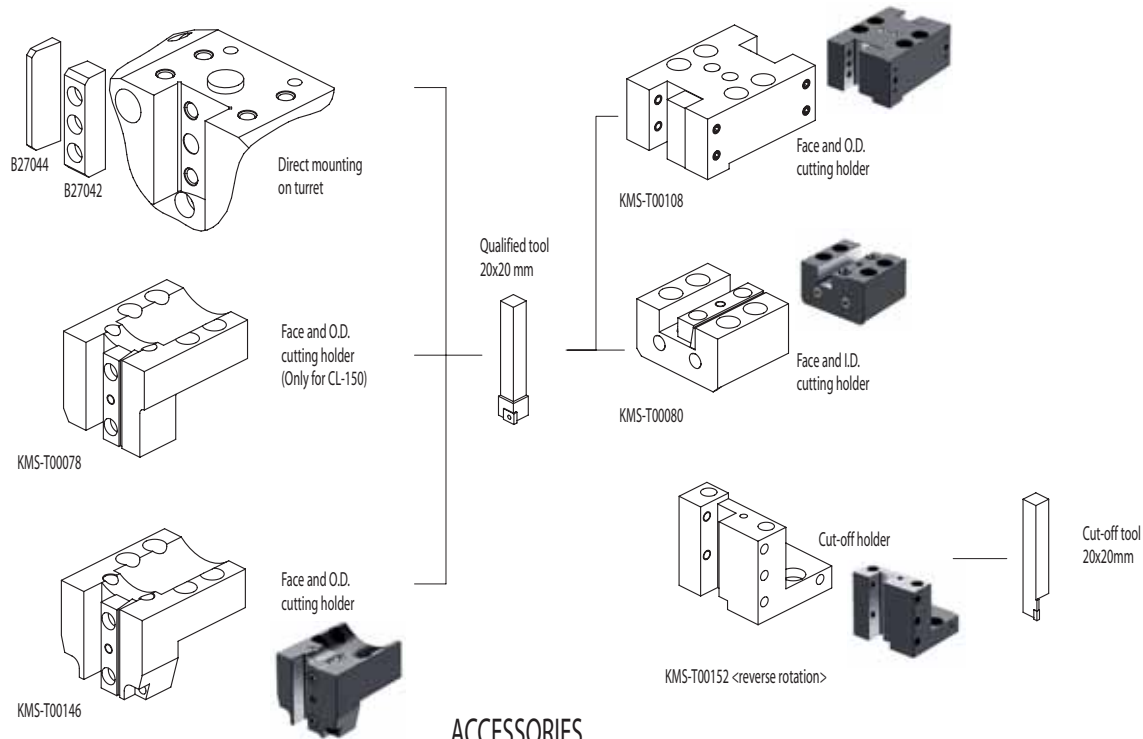
Throw-away drill socket

- KMS-T20100 (Ø32 mm)
- KMS-T20102 (Ø25 mm)
- KMS-T20104 (Ø20 mm)
- KMS-T20190 (Ø16 mm)

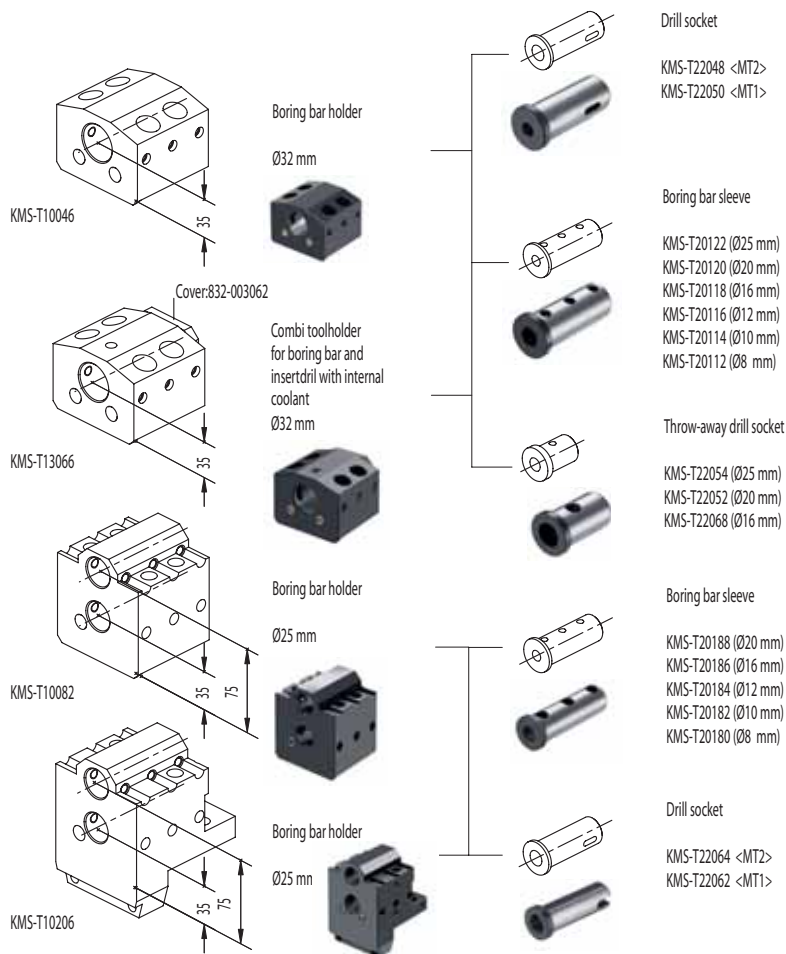


MORI SEIKI

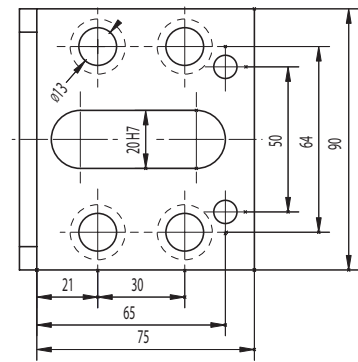
SL150 - SL153 - ZL150 - CL150 - SL154

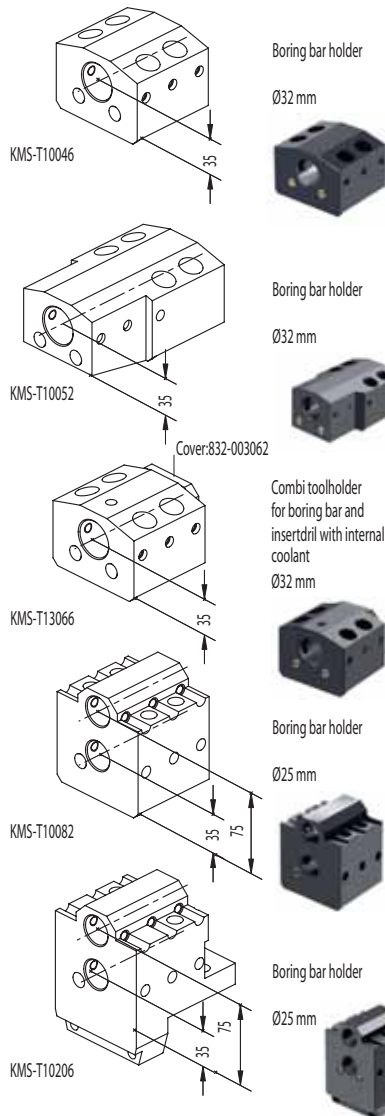
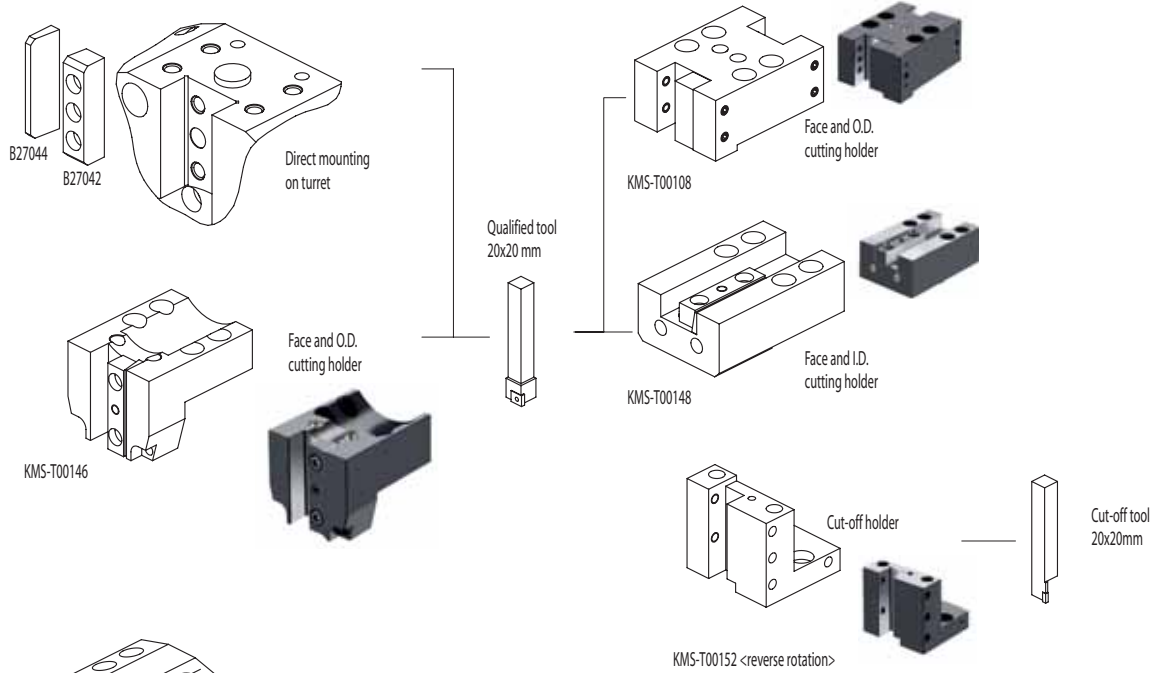


ACCESSORIES

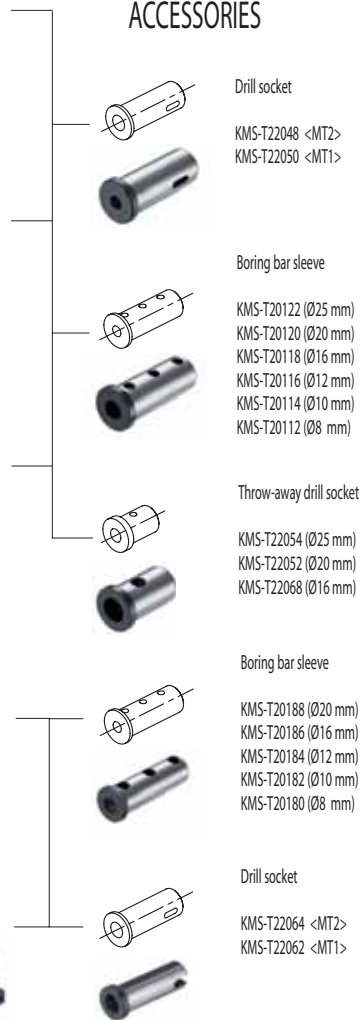


CONNECTION

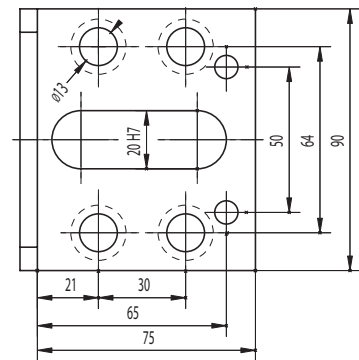




ACCESSORIES



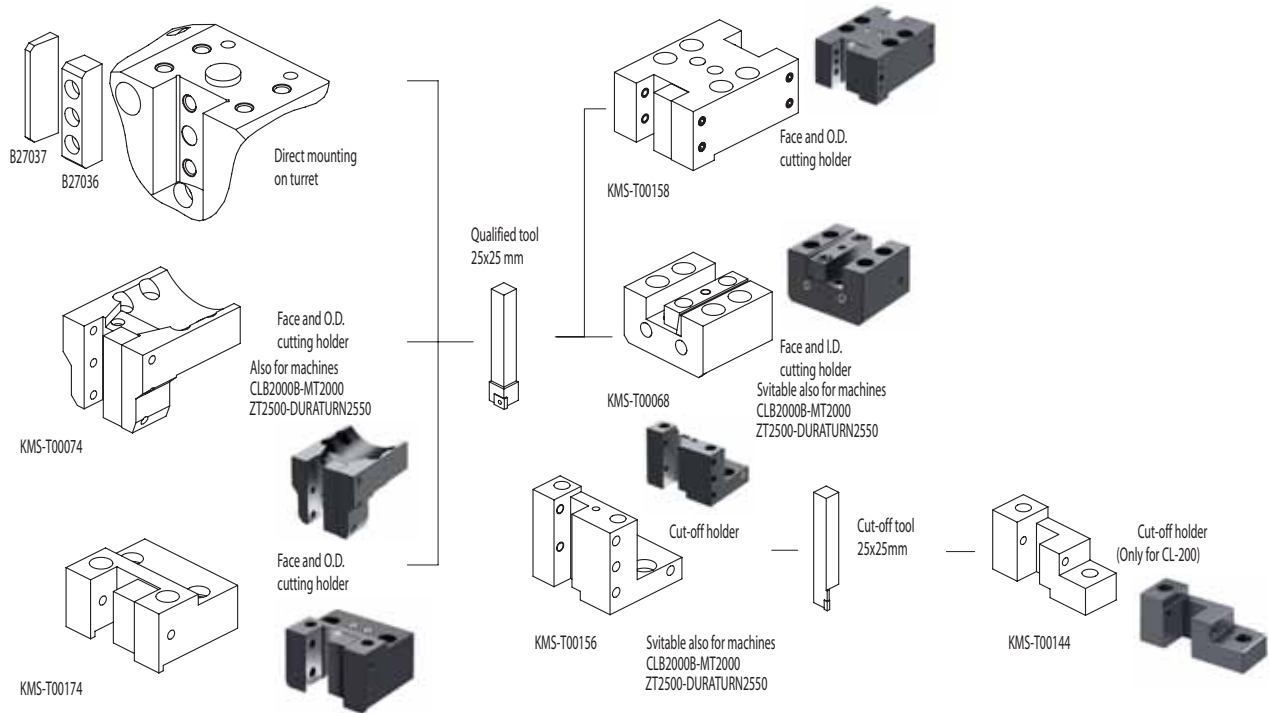
CONNECTION



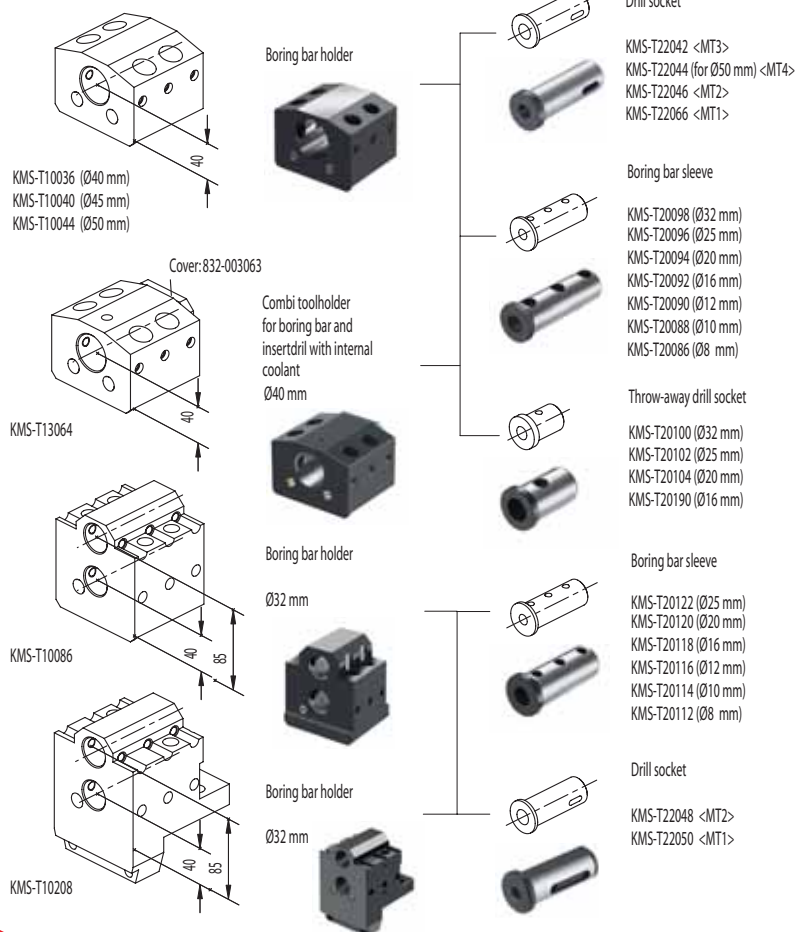


MORI SEIKI

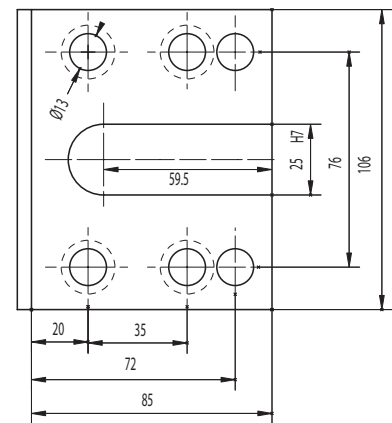
SL200 - SL203 - SL250 - SL253 - ZL200 - ZL250
(CL200) - SL204 - DURATURN 2030
DURATURN 2050 - DURATURN 2550



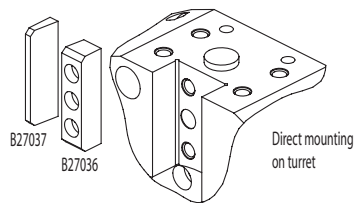
ACCESSORIES



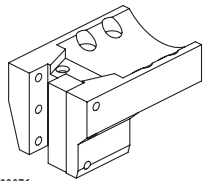
CONNECTION



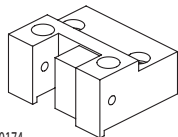
MORI SEIKI SL203MC - SL253MC - ZL200MC ZL250SMC - SL204SMC - SL300MC



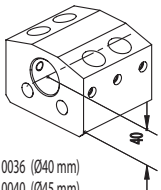
B27037
B27036



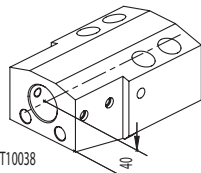
KMS-T00076



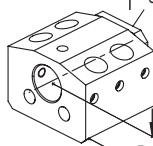
KMS-T00174



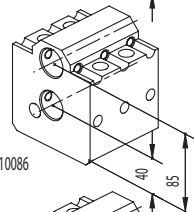
KMS-T10036 (Ø40 mm)
KMS-T10040 (Ø45 mm)
KMS-T10044 (Ø50 mm)



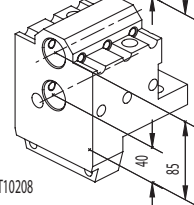
KMS-T10038



KMS-T13064

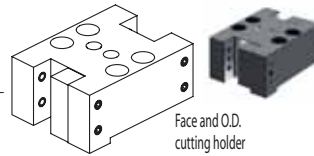


KMS-T10086

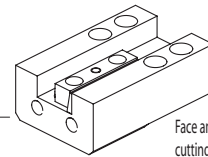


KMS-T10208

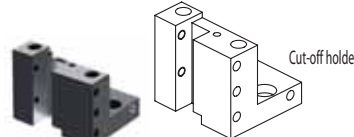
Qualified tool
25x25 mm



KMS-T00158



KMS-T00082



KMS-T00156

Cut-off tool
25x25mm



ACCESSORIES



Drill socket

KMS-T22042 <MT3>
KMS-T22044 (for Ø50 mm) <MT4>
KMS-T22046 <MT2>
KMS-T22066 <MT1>



Boring bar sleeve

KMS-T20098 (Ø32 mm)
KMS-T20096 (Ø25 mm)
KMS-T20094 (Ø20 mm)
KMS-T20092 (Ø16 mm)
KMS-T20090 (Ø12 mm)
KMS-T20088 (Ø10 mm)
KMS-T20086 (Ø8 mm)



Throw-away drill socket

KMS-T20100 (Ø32 mm)
KMS-T20102 (Ø25 mm)
KMS-T20104 (Ø20 mm)
KMS-T20190 (Ø16 mm)



Boring bar sleeve

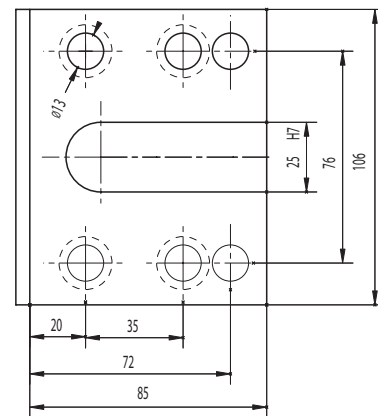
KMS-T20122 (Ø25 mm)
KMS-T20120 (Ø20 mm)
KMS-T20118 (Ø16 mm)
KMS-T20116 (Ø12 mm)
KMS-T20114 (Ø10 mm)
KMS-T20112 (Ø8 mm)



Drill socket

KMS-T22048 <MT2>
KMS-T22050 <MT1>

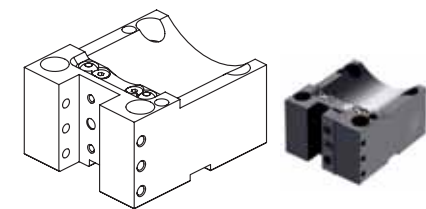
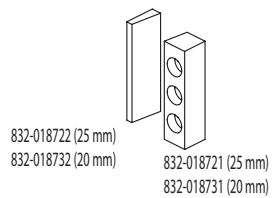
CONNECTION



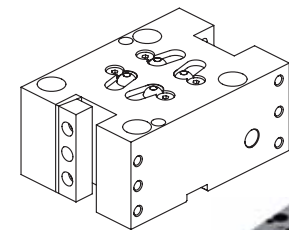


MORI SEIKI

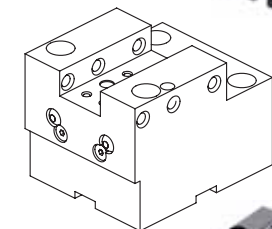
NL2000 (S)MC - 2500 (S)MC NL3000MC (12 STATIONS)



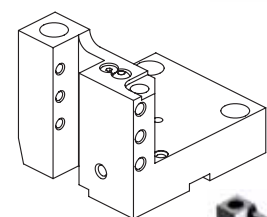
KMS-T00186 (25x25 mm)
KMS-T00187 (20x20 mm)



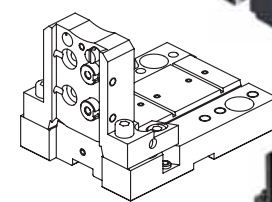
KMS-T00184 (25x25 mm)
KMS-T00185 (20x20 mm)



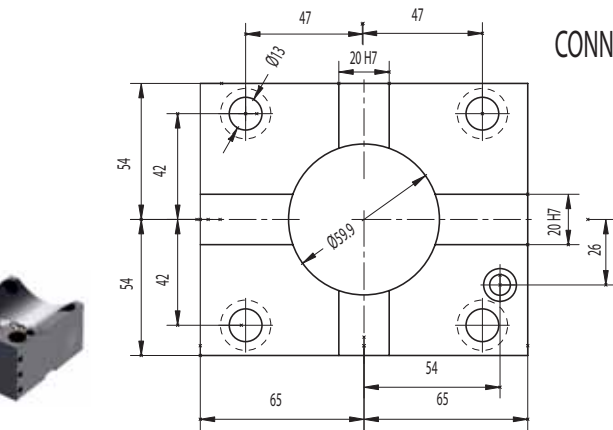
KMS-T03005 (25x25 mm)
KMS-T03006 (20x20 mm)



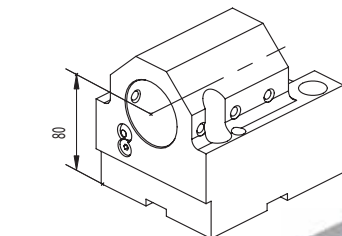
KMS-T00197 (25x25 mm)



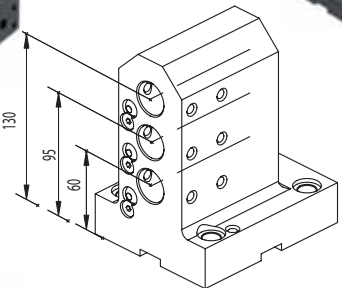
137-00092 (32 mm)



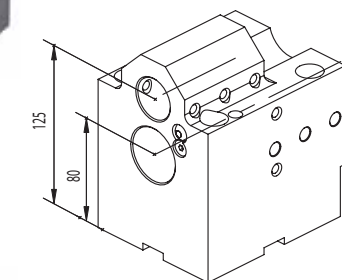
CONNECTION



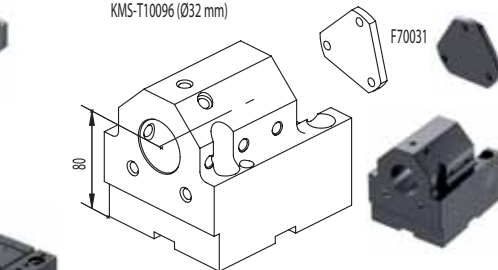
KMS-T10097 (Ø40 mm)
KMS-T10098 (Ø50 mm)



KMS-T10104 (Ø25 mm)

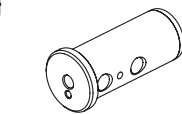


KMS-T10096 (Ø32 mm)

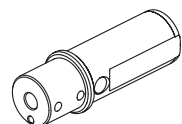


KMS-T13128 (Ø40 mm) with internal coolant

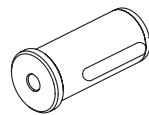
ACCESSORIES



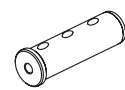
- KMS-T20098-A (Ø32 mm)
- KMS-T20096-A (Ø25 mm)
- KMS-T20094-A (Ø20 mm)
- KMS-T20092-A (Ø16 mm)
- KMS-T20090-A (Ø12 mm)
- KMS-T20088-A (Ø10 mm)
- KMS-T20086-A (Ø8 mm)



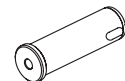
- KMS-T20196-A (Ø20 mm)
- KMS-T20194-A (Ø16 mm)
- KMS-T20110-A (Ø12 mm)
- KMS-T20108-A (Ø10 mm)
- KMS-T20106-A (Ø8 mm)



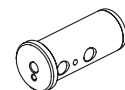
- KMS-T22042-A (MT3)
- KMS-T22044-A (MT4)
- KMS-T22046-A (MT2)
- KMS-T22066-A (MT1)



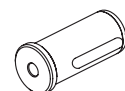
- KMS-T20188 (Ø20 mm)
- KMS-T20186 (Ø16 mm)
- KMS-T20184 (Ø12 mm)
- KMS-T20182 (Ø10 mm)
- KMS-T20180 (Ø8 mm)



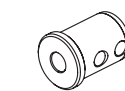
- KMS-T22064 (MT2)
- KMS-T22062 (MT1)



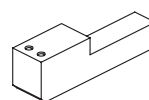
- KMS-T20122-A (Ø25 mm)
- KMS-T20120-A (Ø20 mm)
- KMS-T20118-A (Ø16 mm)
- KMS-T20116-A (Ø12 mm)
- KMS-T20114-A (Ø10 mm)
- KMS-T20112-A (Ø8 mm)



- KMS-T22048-A (MT2)
- KMS-T22050-A (MT1)



- KMS-T20100-A (Ø32 mm)
- KMS-T20102-A (Ø25 mm)
- KMS-T20104-A (Ø20 mm)
- KMS-T20190-A (Ø16 mm)



- KMS-T17002 (Ø25x25 mm)



KINTEK srl

Via Goretta 88/G, 10072 Mappano Fraz. di Caselle (TO) ITALIA

tel. +39.011.9968065 fax +39.011.9965662

<http://www.kintek.it> e-mail: info@kintek.it