

上海文胜机械设备有限公司

电话：021-51873752

传真：021-51873753；021-61294715

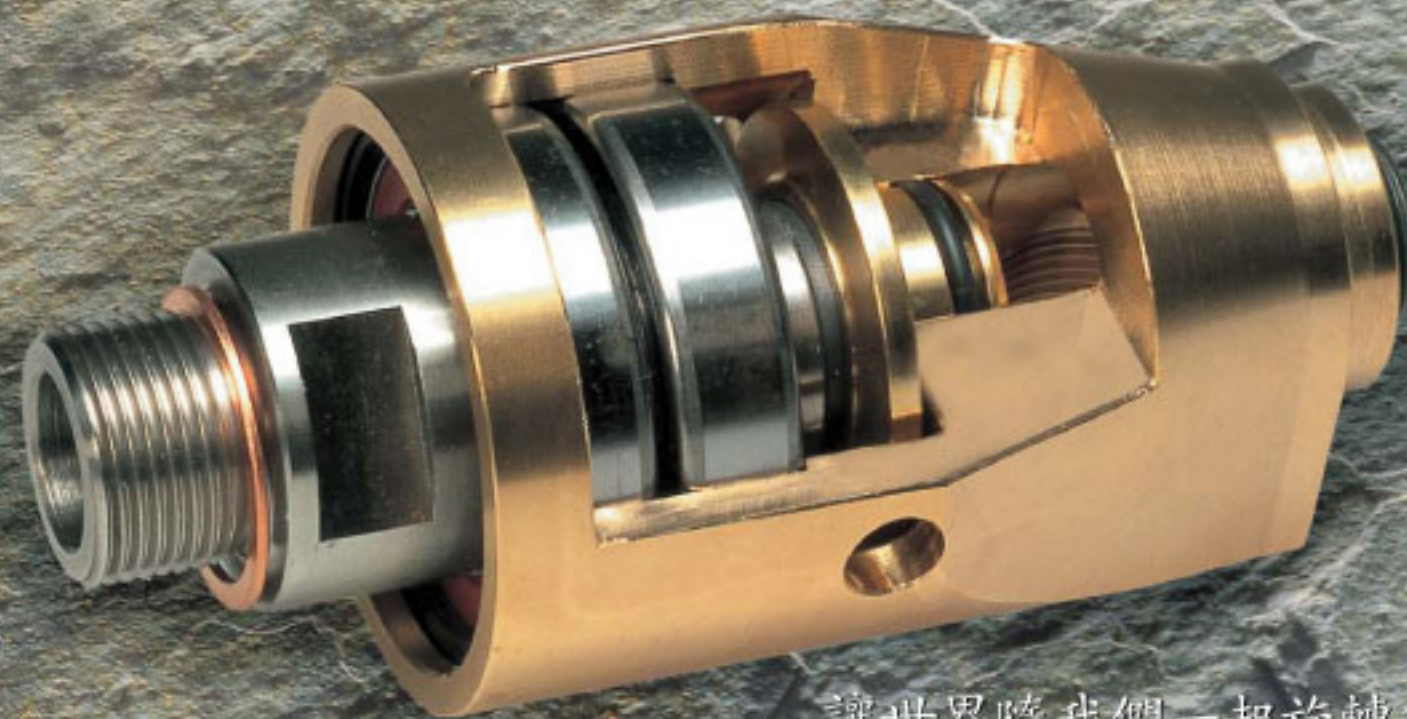
邮件：info@wsjxsb.cn

网址：www.wsjxsb.cn

ROTOFLUX

ROTARY UNIONS

旋转接头



讓世界隨我們一起旋轉起來！

JUNTAS ROTATIVAS

**ROTO
FLUX**

Rotoflux S.r.l.

Via Staffora, 18/11

120090 Opera (MI) - Italy

Tel. +39 02 576 073 78

Fax +39 02 576 052 19

Email rotoflux@rotoflux.com

Partita IVA 11858450155

**ROTO
FLUX**



UK

Introduction-Quality	page6
Seals	page7
Application examples	page8
Mounting examples	page9
Unions for applications with: water,steam,hot oil	page10
Unions for big capacity 2 1/2" -3"	page14
Unions for continuous casting applications	page18
Unions for applications with: air,vacuum,hydraulic oil	page20
Unions for in the shaft mounting applications	page22
Unions in stainless steel	page24
Unions for high speed applications	page26
Unions for high pressure and high speed applications	page32
Unions double passage	page34
Unions around the shaft mounting for applications with:water,air,vacuum,hydraulic oil	page36
Unions for high pressure and low speed applications	page38
Unions double passage for high pressure and low speed applications	page40
Unions four and six passages for high pressure and low speed applications	page42
Unions two,four,six passages with a straight centre bore	page44
Unions five passages with a straight centre bore	page46
Installation - Warranty - General informations	page48

CN

引言 - 质量	p6
密封	p7
应用实例	p8
安装实例	p9
应用于: 水蒸汽、热油的接头	p10
大流量接头	p14
用于连铸生产的接头	p18
用于液压油、空气、真空的接头	p20
装在轴中的接头	p22
不锈钢接头	p24
高速接头	p26
高速高压接头	p32
双通道接头	p34
用于液压油、水、空气、真空的贯穿轴安装的接头	p36
高压低速接头	p38
双通道高压低速接头	p40
4~6通道高压低速接头	p42
4~6通道带直中心孔的接头	p44
5通道带直中心孔的接头	p46
安装 - 质保 - 重点说明	p48

如您有特殊的要求,请填写下表传真给我公司。谢谢!

公司名称 Company name	

联系人 Mr./Mrs.	

电话 Tel.	传真 Fax
电子邮箱 E-mail	网址 Http

应用介质 Media	干净或脏污介质 Clean or dirty media

介质压力 Media pressure	应用性质 Kind of application

旋转速度 Rotation speed	机器类型 Type of machine

介质温度 Media temperature	特殊条件 Special conditions

接头尺寸 Union size	现用的接头生产商和零件号码 Manufacturer and part member of present union

旋转螺纹 Rotor thread	质量要求 Quantity required

通道数量 N.of passages	每年用量 Annual quantity

上海文胜机械设备有限公司
 电话: 021-51873752
 传真: 021-51873753; 021-61294715
 邮件: info@wsjxsb.cn
 网址: www.wsjxsb.cn

Water 水

<p>ROTOFLUX UNIVERSAL 通用型</p>  <p>p10</p>	<p>50 bar-750 PSI 175°C-350°F 3,500 RPM 1/4" - 2" Pass. 1-2</p>	<p>ROTOFLUX LARGE CAPACITY 大通路</p>  <p>p14</p>	<p>10 bar-150 PSI 120°C-250°F 750 RPM 2 1/2" - 3" Pass. 1-2</p>	<p>ROTOFLUX FOR CONTINUOUS CASTING APPLICATIONS 用于铸件</p>  <p>p18</p>	<p>10 bar-150 PSI 120°C-250°F 100 RPM 3/4" - 1 1/2" Pass. 1-2</p>	<p>ROTOFLUX STAINLESS STEEL UNIONS 不锈钢</p>  <p>p22</p>	<p>50 bar-750 PSI 120°C-250°F 3,500 RPM 1/4" - 1/2" Pass. 1</p>	<p>ROTOFLUX STAINLESS STEEL UNIONS 不锈钢</p>  <p>p24</p>	<p>50 bar-750 PSI 150°C-300°F 3,500 RPM 1/4" - 2" Pass. 1-2</p>	<p>ROTOFLUX FOR HIGH PRESSURE AND HIGH SPEED APPLICATIONS 高压 高转速</p>  <p>p32</p>	<p>400 bar-5,700 PSI 90°C-195°F 1,500 RPM 1/4" - 3/4" Pass. 1</p>	<p>ROTOFLUX AROUND THE SHAFT UNION 贯穿于轴</p>  <p>p36</p>	<p>20 bar-290 PSI 120°C-250°F 750 RPM 1/4" Pass. 1</p>	<p>ROTOFLUX FOR HIGH PRESSURE AND LOW SPEED 高压力 低转速</p>  <p>p38</p>	<p>10 bar-150 PSI 120°C-250°F 250 RPM 1/2" - 3/4" Pass. 1-2</p>
<p>ROTOFLUX WITH 2 PASSAGES FOR HIGH PRESSURE AND LOW SPEED 双通路 高压力低转速</p>  <p>p40</p>	<p>10 bar-150 PSI 120°C-250°F 250 RPM 3/8" - 3/4" Pass. 2</p>	<p>ROTOFLUX FOUR PASSAGES FOR HIGH PRESSURE AND LOW SPEED 四通路 高压力低转速</p>  <p>p42</p>	<p>10 bar-150 PSI 120°C-250°F 250 RPM 3/8" Pass. 4</p>	<p>ROTOFLUX SIX PASSAGES FOR HIGH PRESSURE AND LOW SPEED 六通路 高压力低转速</p>  <p>p42</p>	<p>10 bar-150 PSI 120°C-250°F 250 RPM 3/8" Pass. 6</p>	<p>ROTOFLUX FOUR PASSAGES WITH A STRAIGHT CENTRE BORE 四通路 带直中心孔</p>  <p>p44</p>	<p>10 bar-150 PSI 120°C-250°F 200 RPM 3/8" Pass. 2+1</p>	<p>ROTOFLUX FOUR PASSAGES WITH A STRAIGHT CENTRE BORE 四通路 带直中心孔</p>  <p>p44</p>	<p>10 bar-150 PSI 120°C-250°F 200 RPM 3/8" Pass. 4+1</p>	<p>ROTOFLUX SIX PASSAGES WITH A STRAIGHT CENTRE BORE 六通路 带直中心孔</p>  <p>p44</p>	<p>10 bar-150 PSI 120°C-250°F 200 RPM 3/8" Pass. 6+1</p>	<p>ROTOFLUX FIVE PASSAGES WITH A CENTER BORE 五通路 带直中心孔</p>  <p>p46</p>	<p>10 bar-150 PSI 120°C-250°F 80 RPM 3/8" Pass. 5+1</p>		

Steam 蒸汽

ROTOFLUX UNIVERSAL
通用型



p10

8 bar-120 PSI
170°C-330°F
500 RPM
1/4" - 2"
Pass. 1-2

Hot Oil 热油

ROTOFLUX UNIVERSAL
通用型



p10

6.5 bar-100 PSI
200°C-395°F
300 RPM
1/4" - 2"
Pass. 1-2





Air & Vacuum 空气与真空

<p>ROTOFLUX FOR AIR, VACUUM 适用空气 真空</p>  <p>p20</p>	<p>10 bar-150 PSI 6.7 KPa-28" Hg 120°C-250°F 3,500 RPM 1/4" - 2" Pass. 1</p>	<p>ROTOFLUX IN THE SHAFT MOUNTING 用于轴或柱体</p>  <p>p22</p>	<p>10 bar-150 PSI 6.7 KPa-28" Hg 120°C-250°F 3,500 RPM 1/4" - 1/2" Pass. 1</p>	<p>ROTOFLUX STAINLESS STEEL UNIONS 不锈钢</p>  <p>p24</p>	<p>10 bar-150 PSI 6.7 KPa-28" Hg 150°C-300°F 3,500 RPM 1/4" - 2" Pass. 1</p>	<p>ROTOFLUX AROUND THE SHAFT UNION 贯穿于轴</p>  <p>p34</p>	<p>10 bar-150 PSI 6.7 KPa-28" Hg 120°C-250°F 1,500 RPM 2" x 1/4" - 1/2" Pass. 2</p>	<p>ROTOFLUX AROUND THE SHAFT UNION 贯穿于轴</p>  <p>p36</p>	<p>10 bar-150 PSI 6.7 KPa-28" Hg 120°C-250°F 750 RPM 1/4" Pass. 1</p>	<p>ROTOFLUX FOR HIGH PRESSURE AND LOW SPEED 高压力低转速</p>  <p>p38</p>	<p>10 bar-150 PSI 6.7 KPa-28" Hg 120°C-250°F 250 RPM 1/2" - 3/4" Pass. 1-2</p>	<p>ROTOFLUX WITH 2 PASSAGES FOR HIGH PRESSURE AND LOW SPEED 双通路 高压力低转速</p>  <p>p40</p>	<p>10 bar-150 PSI 6.7 KPa-28" Hg 120°C-250°F 250 RPM 3/8" - 3/4" Pass. 2</p>	<p>ROTOFLUX FOUR PASSAGES FOR HIGH PRESSURE AND LOW SPEED 四通路 高压力低转速</p>  <p>p42</p>	<p>10 bar-150 PSI 6.7 KPa-28" Hg 120°C-250°F 250 RPM 3/8" Pass. 4</p>
<p>ROTOFLUX SIX PASSAGES FOR HIGH PRESSURE AND LOW SPEED 六通路 高压力低转速</p>  <p>p42</p>	<p>10 bar-150 PSI 6.7 KPa-28" Hg 120°C-250°F 250 RPM 3/8" Pass. 6</p>	<p>ROTOFLUX TWO PASSAGES WITH A STRAIGHT CENTRE BORE 双通路 带直中心孔</p>  <p>p44</p>	<p>10 bar-150 PSI 6.7 KPa-28" Hg 120°C-250°F 200 RPM 3/8" Pass. 2+1</p>	<p>ROTOFLUX FOUR PASSAGES WITH A STRAIGHT CENTRE BORE 四通路 带直中心孔</p>  <p>p44</p>	<p>10 bar-150 PSI 6.7 KPa-28" Hg 120°C-250°F 200 RPM 3/8" Pass. 4+1</p>	<p>ROTOFLUX FIVE PASSAGES WITH A CENTER BORE 五通路 带直中心孔</p>  <p>p44</p>	<p>10 bar-150 PSI 6.7 KPa-28" Hg 120°C-250°F 200 RPM 3/8" Pass. 6+1</p>	<p>ROTOFLUX FIVE PASSAGES WITH A CENTER BORE 五通路 带直中心孔</p>  <p>p46</p>	<p>10 bar-150 PSI 6.7 KPa-28" Hg 120°C-250°F 80 RPM 3/8" Pass. 5+1</p>						

Hydraulic Oil 液压油

<p>ROTOFLUX FOR HYDRAULIC OIL 适用于液压油</p>  <p>p20</p>	<p>50 bar-750 PSI 120°C-250°F 3,500 RPM 1/4" - 2" Pass. 1</p>	<p>ROTOFLUX IN THE SHAFT MOUNTING 用于轴或柱体</p>  <p>p22</p>	<p>50 bar-750 PSI 120°C-250°F 3,500 RPM 1/4" - 1/2" Pass. 1</p>	<p>ROTOFLUX STAINLESS STEEL UNIONS 不锈钢</p>  <p>p24</p>	<p>50 bar-750 PSI 150°C-300°F 3,500 RPM 1/4" - 2" Pass. 1</p>	<p>ROTOFLUX DOUBLE PASSAGE 双通路</p>  <p>p32</p>	<p>400 bar-5,700 PSI 90°C-195°F 1,500 RPM 1/4" - 3/4" Pass. 1</p>	<p>ROTOFLUX DOUBLE PASSAGE 双通路</p>  <p>p34</p>	<p>50 bar-750 PSI 120°C-250°F 2" x 1/4" - 1/2" Pass. 2</p>	<p>ROTOFLUX AROUND THE SHAFT UNION 贯穿于轴</p>  <p>p36</p>	<p>20 bar-290 PSI 120°C-250°F 750 RPM 1/4" Pass. 1</p>	<p>ROTOFLUX FOR HIGH PRESSURE AND LOW SPEED 高压力低转速</p>  <p>p38</p>	<p>250 bar-3,600 PSI 120°C-250°F 250 RPM 1/2" - 3/4" Pass. 1-2</p>	<p>ROTOFLUX WITH 2 PASSAGES FOR HIGH PRESSURE AND LOW SPEED 双通路 高压力低转速</p>  <p>p40</p>	<p>250 bar-3,600 PSI 120°C-250°F 250 RPM 3/8" - 3/4" Pass. 2</p>
<p>ROTOFLUX FOUR PASSAGES FOR HIGH PRESSURE AND LOW SPEED 四通路 高压力低转速</p>  <p>p42</p>	<p>250 bar-3,600 PSI 120°C-250°F 250 RPM 3/8" Pass. 4</p>	<p>ROTOFLUX SIX PASSAGES FOR HIGH PRESSURE AND LOW SPEED 六通路 高压力低转速</p>  <p>p42</p>	<p>250 bar-3,600 PSI 120°C-250°F 250 RPM 3/8" Pass. 6</p>	<p>ROTOFLUX TWO PASSAGES WITH A STRAIGHT CENTRE BORE 双通路 带直中心孔</p>  <p>p44</p>	<p>250 bar-3,600 PSI 120°C-250°F 200 RPM 3/8" Pass. 2+1</p>	<p>ROTOFLUX SIX PASSAGES WITH A STRAIGHT CENTRE BORE 六通路 带直中心孔</p>  <p>p44</p>	<p>250 bar-3,600 PSI 120°C-250°F 200 RPM 3/8" Pass. 4+1</p>	<p>ROTOFLUX SIX PASSAGES WITH A STRAIGHT CENTRE BORE 六通路 带直中心孔</p>  <p>p44</p>	<p>250 bar-3,600 PSI 120°C-250°F 200 RPM 3/8" Pass. 6+1</p>	<p>ROTOFLUX FIVE PASSAGES WITH A STRAIGHT CENTRE BORE 五通路 带直中心孔</p>  <p>p46</p>	<p>250 bar-3,600 PSI 120°C-250°F 80 RPM 3/8" Pass. 5+1</p>				

Coolant 冷却水

<p>ROTOFLUX FOR HIGH SPEED, MACHINE TOOLS APPLICATION 适用高速 应用于特殊刀具中心内冷</p>  <p>p26</p>	<p>100 bar-1,450 PSI 120°C-250°F 20,000 RPM 1/4" - 3/8" Pass. 1</p> <p>Not for dry running 不能干转!</p>	<p>ROTOFLUX FOR HIGH SPEED, MACHINE TOOLS APPLICATIONS 适用于高速 应用于特殊刀具中心内冷</p>  <p>p30</p>	<p>100 bar-1,450 PSI 90°C-195°F 30,000 RPM 1/4" - 3/8" Pass. 1</p> <p>Not for dry running 不能干转!</p>	<p>ROTOFLUX FOR HIGH SPEED APPLICATIONS AND DRY RUN 适用于高转速 能干转</p>  <p>p28</p>	<p>100 bar-1,450 PSI 120°C-250°F 20,000 RPM 1/2" - 3/8" Pass. 1</p> <p>For dry running 可以干转!</p>	<p>ROTOFLUX FOR HIGH SPEED, MACHINE TOOLS APPLICATIONS 适用高速 应用于特殊刀具中心内冷</p>  <p>p30</p>	<p>100 bar-1,450 PSI 90°C-195°F 30,000 RPM 1/4" - 3/8" Pass. 1</p> <p>For dry running 可以干转!</p>
---	---	---	--	---	---	--	--

UK

INTRODUCTION

The company ROTOFLUX was established to fulfill the needs in the current market of rotary unions. With emphasis on providing a quality product at an affordable price, backed by an excellent after sales service. Furthermore the technical and commercial experience of ROTOFLUX staff has, in a short space of time, established them as one of the market leaders in the field of rotary unions. A large inventory of standard unions, combined with an efficient logistic organisation, ensures short delivery times.

QUALITY

The quality of ROTOFLUX is "consistent quality" warranted by the stringent testing of every single union before dispatch. Only high quality materials (stainless steel, special steels, brass, tungsten carbide) are used in making ROTOFLUX union. The careful control of the manufacturing process involved in producing the necessary parts warrants that all the unions are manufactured within the technical specification.

CN

引言

ROTOFLUX公司专注于满足当前旋转接头市场的需求，同时产品有极具竞争力的价格和完善的售后服务，实是您选用高品质旋转接头的明智选择。此外ROTOFLUX产品有良好的技术和丰富的市场经验。在短时间内已在中国旋转接头领域建立起良好的声誉，是市场上龙头品牌之一。

标准产品备有大量库存，结合高效的物流系统，保证了最短交货期。

品质

ROTOFLUX品牌旋转接头是耐用坚固的高品质产品，每一个产品都经过严格的测试检验。

ROTOFLUX旋转接头使用高品质之材料制造（不锈钢，特制钢，黄铜，碳化钨）。

仔细控制每一步制造工艺过程，包括零部件的制造。

保证所有旋转接头的制造加工标准都在技术规范之内。

UK

ROTOFLUX BALANCED SEALING

Tungsten carbide to carbon graphite seals are used for clean water, steam, air, vacuum, hot oil application. Tungsten carbide to tungsten carbide seals are used for application with poor filtering water, hydraulic oil, coolant, abrasive fluids. The seal faces are micro-lapped for a perfect mating. The Rotoflux balanced design keeps of the fluid pressure.

CN

密封

石墨密封环适用于纯净的过滤水，蒸气、空气，真空及热油的密封。碳化钨密封环适用于过滤较差的水，液压油，冷却剂及研磨液。这种密封环的接合面只有微小的搭接，需要精确的配合。

该密封设计可使液体加于密封面上的压力平衡，并保持压力基本恒定。

UK

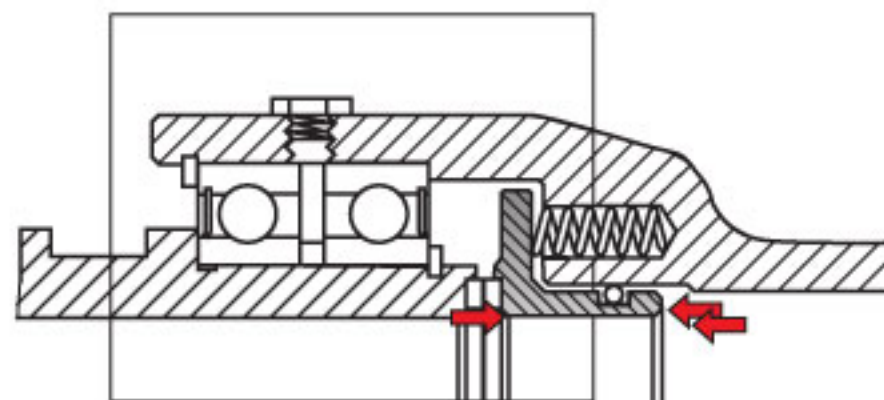
Springs located out of the fluid flow

Three springs provide the calculated constant force required for the most appropriate specific pressure on the seal faces. The springs made with inox steel are located outside of the fluid flow to avoid pressure drops, turbulence and eventual vibrations and noise.

CN

流量稳定性由弹簧设定

由三个周向均布的弹簧提供了经核算出的，必须的恒定压力，作用到特制的密封环面上，同时不锈钢弹簧可避免由流量不稳定，液压力不平衡产生的振动和噪音。

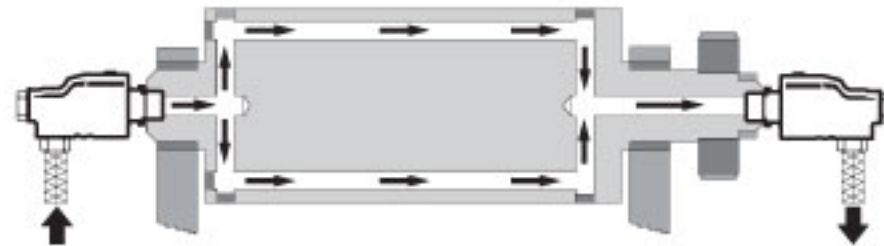


UK APPLICATION EXAMPLES

CN 应用举例

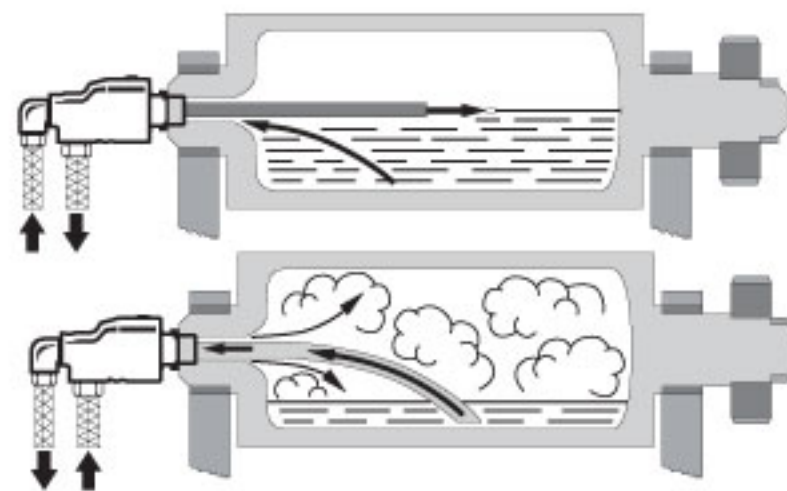
Rotoflux single passage

单通路



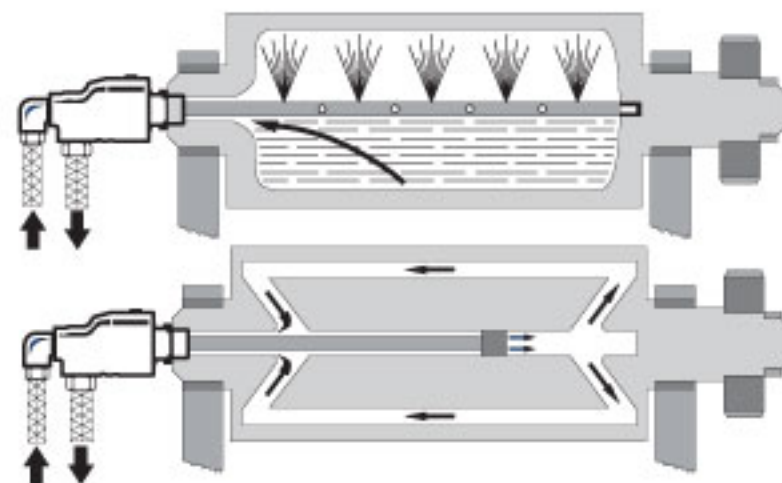
Rotoflux double passage stationary siphon

双通路 带固定的虹吸管



Rotoflux double passage rotating siphon

双通路 带可旋转虹吸管

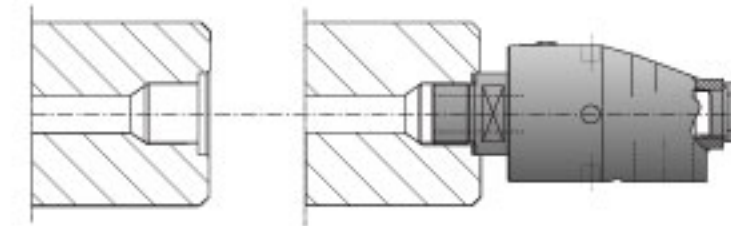


UK APPLICATION EXAMPLES

CN 应用举例

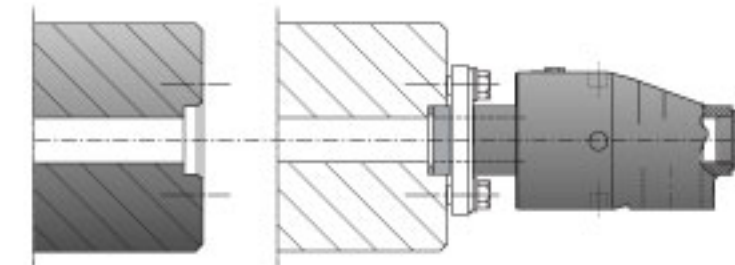
Mounting with rotor pilot for high speed applications.

直接与转子固定，应用于高速率旋转



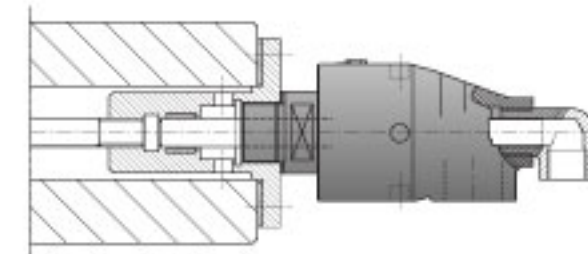
Mounting with rotor flange for both clockwise and counterclockwise rotations.

由法兰固定，应用于顺时针和逆时针的双向旋转



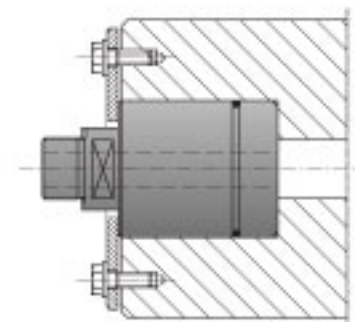
Mounting with siphon splitted in two parts for application with long siphon or high speed rotations.

此装置用于接虹吸管高速率旋转



In the shaft mounting for minimum overhang.

在轴中安装，需留出极小的外伸量





UK ROTOFLUX UNIVERSAL
CN 通用系列

耐压力 温度	Water 水	Steam 蒸汽	Hot oil 热油
	1/4" ÷ 1 1/2" 2"	1/4" ÷ 2"	1/4" ÷ 2"
	50 bar ⇨ 750 PSI 40 bar ⇨ 600 PSI	8 bar ⇨ 120 PSI	6,5 bar ⇨ 100 PSI
	175°C ⇨ 350°F	170°C ⇨ 330°F	200°C ⇨ 395°F
转速	1/4" ÷ 3/4"	1"	1 1/4" ÷ 1 1/2"
	3.500	3.000	2.500
			2"
			750

ROTOFLUX UNIVERSAL

1 AND 2 PASSAGES SIZES FROM 1/4" TO 2.

These unions are available with two different balanced and microlapped sealing assemblies:

* N (standard sealing) with carbon graphite to tungsten carbide seals for applications with filtered water, hot oil, intermittent flow of saturated steam.

* D model (heavy duty sealing) with tungsten carbide to tungsten carbide seals for poor filtrated water or abrasive fluids.

Fluid pressure over 8 bar is allowed only when the fluid is cool water at max temp. 125° F (50° C). In applications with hot oil at temp over 350° F (175° C), max rotation speed is 300 RPM. Do not use the unions at max application limits without consulting ROTOFLUX.

通用系列

* 不允许在不与ROTOFLUX 客户服务部门协商的情况下，超过旋转接头的极限而使用。

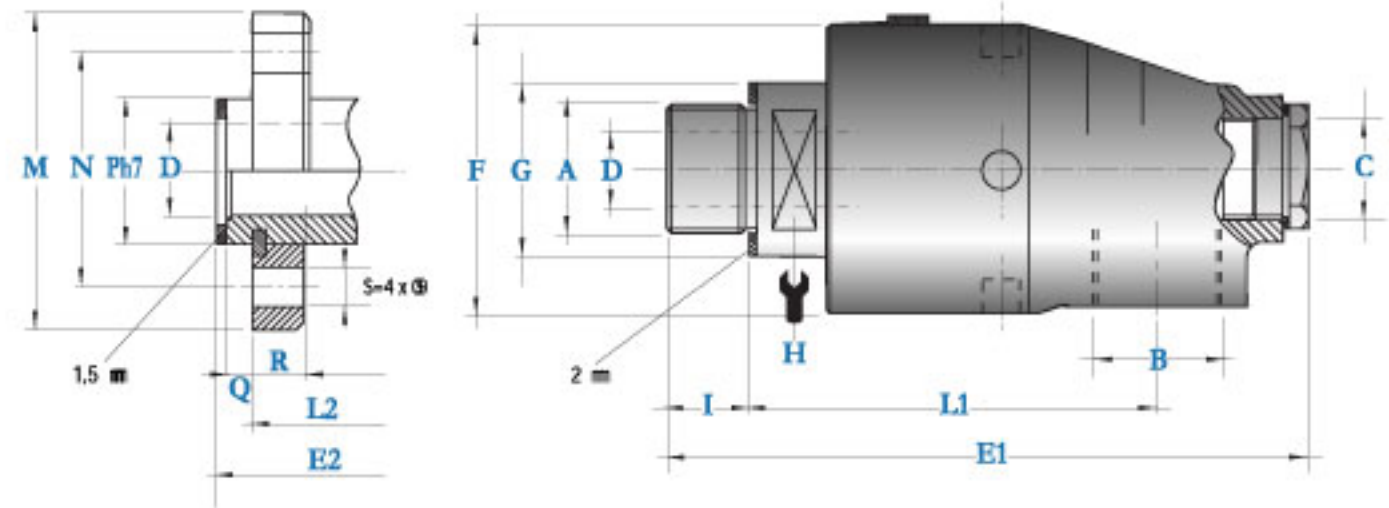
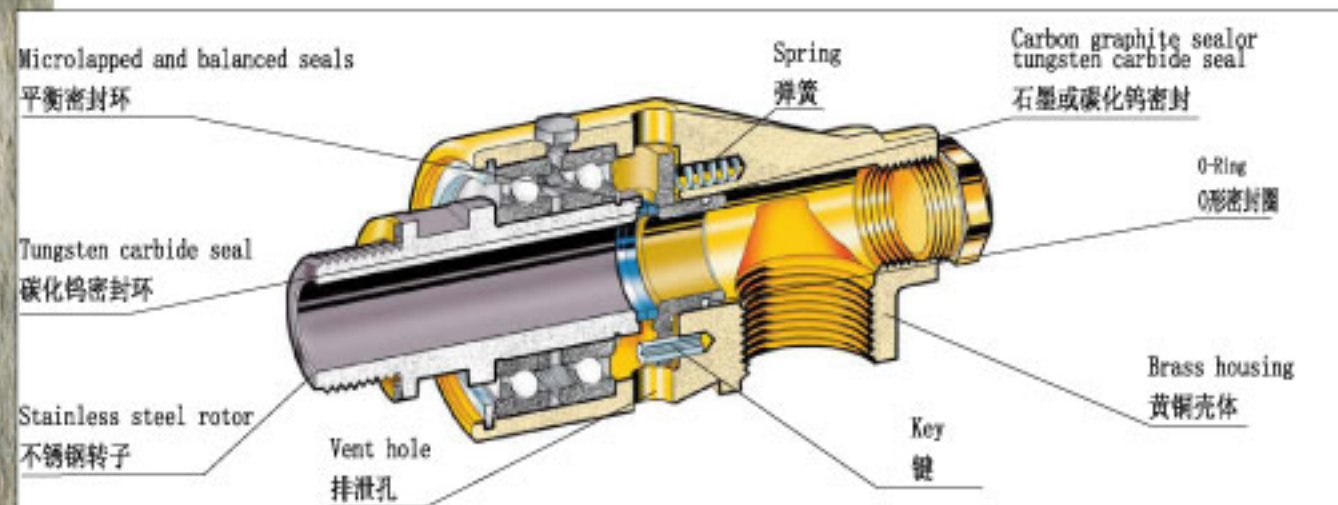
* 在冷却水到达50度时，液体压力不应超过8bar。在应用中，当热油的温度超过175度时，转速不得超过300rpm。在有正、反转向的应用时，建议选用有法兰的接头。此型号旋转接头，由于其设计简洁、价位合理，被应用在许多场合。

* 下面两组密封组合均可由客户选用：

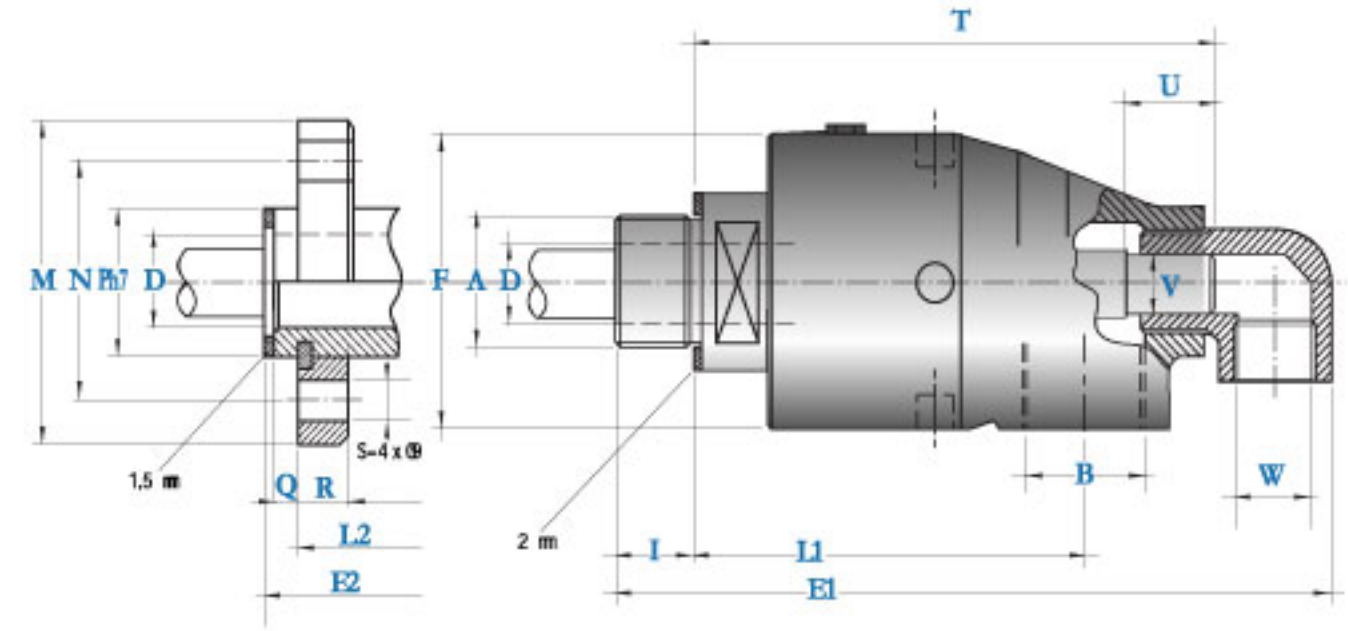
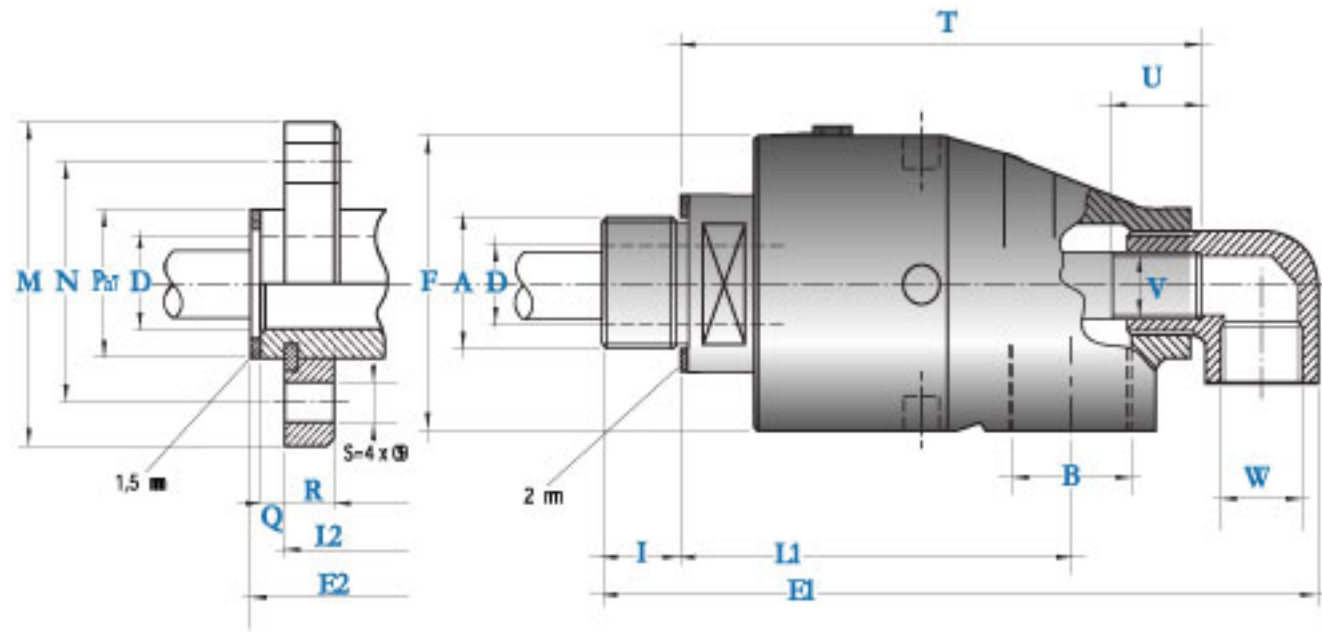
N型（标准型）- 石墨密封，应用于过滤水、热油、饱和水蒸气的间歇供给情形。

D型（重负荷型）- 碳化钨密封，应用于劣质过滤水及磨削液的密封。

* 旋转接头的壳体为黄铜，转子等金属零件为不锈钢制造。弹簧可防止由于流体变化引起的振动和噪音。接头尺寸由1/4"-2"，客户可根据需要选择有、无法兰。



型号		外形尺寸																	Kg	
N	D	A	B	C	D	E1	E2	F	G	H	I	L1	L2	M	N	Ph7	Q	R		S
S08-300-01R	S08-301-01R	ø 1/4" LH	ø 1/4"	-	7	88	-	43	20	17	11	67	-	-	-	-	-	-	-	0.6
S08-300-02L	S08-301-02L	ø 1/4" LH	ø 1/4" ø 1/4"	ø 1/4"	7	88	-	43	20	17	11	67	-	-	-	-	-	-	-	0.6
S10-300-01R	S10-301-01R	ø 3/8" LH	ø 3/8"	-	9	106	-	43	25	17	13	73	-	-	-	-	-	-	-	0.7
S10-300-02L	S10-301-02L	ø 3/8" LH	ø 3/8" ø 1/4"	ø 1/4"	9	106	-	43	25	17	13	73	-	-	-	-	-	-	-	0.7
S10-300-03F	S10-301-03F	-	ø 3/8" ø 1/4"	ø 1/4"	9	-	109	43	-	-	-	-	82	53	38	18	6	8	9	0.8
S15-300-01R	S15-301-01R	ø 1/2" LH	ø 1/2" ø 3/8"	ø 3/8"	13	120	-	55	30	24	13	82	-	-	-	-	-	-	-	1.3
S15-300-02L	S15-301-02L	ø 1/2" LH	ø 1/2" ø 3/8"	ø 3/8"	13	120	-	55	30	24	13	82	-	-	-	-	-	-	-	1.3
S15-300-03F	S15-301-03F	-	ø 1/2" ø 3/8"	ø 3/8"	13	-	125	55	-	-	-	-	92	60	45	25	6	10	9	1.5
S20-300-01R	S20-301-01R	ø 3/4" LH	ø 3/4" ø 1/2"	ø 1/2"	18	139	-	64	37	30	16	94	-	-	-	-	-	-	-	1.8
S20-300-02L	S20-301-02L	ø 3/4" LH	ø 3/4" ø 1/2"	ø 1/2"	18	139	-	64	37	30	16	94	-	-	-	-	-	-	-	1.8
S20-300-03F	S20-301-03F	-	ø 3/4" ø 1/2"	ø 1/2"	18	-	137	64	-	-	-	-	101	68	50	30	6	10	9	2
S25-300-01R	S25-301-01R	ø 1" LH	ø 1" ø 3/4"	ø 3/4"	23	162	-	70	45	36	20	105	-	-	-	-	-	-	-	2.2
S25-300-02L	S25-301-02L	ø 1" LH	ø 1" ø 3/4"	ø 3/4"	23	162	-	70	45	36	20	105	-	-	-	-	-	-	-	2.2
S25-300-03F	S25-301-03F	-	ø 1" ø 3/4"	ø 3/4"	23	-	164	70	-	-	-	-	119	78	60	36	7	12	9	2.6
S32-300-01R	S32-301-01R	ø 1 1/4" LH	ø 1 1/4" ø 1"	ø 1"	31	181	-	85	55	46	22	119	-	-	-	-	-	-	-	3.5
S32-300-02L	S32-301-02L	ø 1 1/4" LH	ø 1 1/4" ø 1"	ø 1"	31	181	-	85	55	46	22	119	-	-	-	-	-	-	-	3.5
S32-300-03F	S32-301-03F	-	ø 1 1/4" ø 1"	ø 1"	31	-	182	85	-	-	-	-	133	94	70	44	8	12	11	4
S40-300-01R	S40-301-01R	ø 1 1/2" LH	ø 1 1/2" ø 1 1/4"	ø 1 1/4"	36	208	-	92	60	50	24	132	-	-	-	-	-	-	-	5
S40-300-02L	S40-301-02L	ø 1 1/2" LH	ø 1 1/2" ø 1 1/4"	ø 1 1/4"	36	208	-	92	60	50	24	132	-	-	-	-	-	-	-	5
S40-300-03F	S40-301-03F	-	ø 1 1/2" ø 1 1/4"	ø 1 1/4"	36	-	203	92	-	-	-	-	139	99	78	52	10	14	11	5.5
S50-300-01R	S50-301-01R	ø 2" LH	ø 2" ø 1 1/4"	ø 1 1/4"	48	223	-	110	70	60	25	139	-	-	-	-	-	-	-	8.2
S50-300-02L	S50-301-02L	ø 2" LH	ø 2" ø 1 1/4"	ø 1 1/4"	48	223	-	110	70	60	25	139	-	-	-	-	-	-	-	8.2
S60-300-03F	S60-301-03F	-	ø 2" ø 1 1/4"	ø 1 1/4"	48	-	224	110	-	-	-	-	154	119	95	65	10	14	11	9



型号		外形尺寸 双通路 固定虹吸管																			Kg
N	D	A	B	D	E1	E2	F	I	L1	L2	M	N	Pv	Q	R	S	T	U	V	W	
S10-300-01R-800	S10-301-01R-800	G 3/8"RH	G 3/8"	9	129	-	43	13	73	-	-	-	-	-	-	-	92	10	M6	G 1/4"	0,8
S10-300-02L-800	S10-301-02L-800	G 3/8"LH	G 3/8"	9	129	-	43	13	73	-	-	-	-	-	-	-	92	10	M6	G 1/4"	0,8
S10-300-03F-800	S10-301-03F-800	-	G 3/8"	9	-	132	43	-	-	82	53	38	18	6	8	9	101	10	M6	G 1/4"	0,9
S15-300-01R-800	S15-301-01R-800	G 1/2"RH	G 1/2"	13	146	-	55	13	82	-	-	-	-	-	-	-	105	12	G 1/8"	G 3/8"	1,4
S15-300-02L-800	S15-301-02L-800	G 1/2"LH	G 1/2"	13	146	-	55	13	82	-	-	-	-	-	-	-	105	12	G 1/8"	G 3/8"	1,4
S15-300-03F-800	S15-301-03F-800	-	G 1/2"	13	-	151	55	-	-	92	60	45	25	6	10	9	115	12	G 1/8"	G 3/8"	1,6
S20-300-01R-800	S20-301-01R-800	G 3/4"RH	G 3/4"	18	173	-	64	16	94	-	-	-	-	-	-	-	124	14	G 1/4"	G 1/2"	1,9
S20-300-02L-800	S20-301-02L-800	G 3/4"LH	G 3/4"	18	173	-	64	16	94	-	-	-	-	-	-	-	124	14	G 1/4"	G 1/2"	1,9
S20-300-03F-800	S20-301-03F-800	-	G 3/4"	18	-	172	64	-	-	101	68	50	30	6	10	9	131	14	G 1/4"	G 1/2"	2,1
S25-300-01R-800	S25-301-01R-800	G 1"RH	G 1"	23	200	-	70	20	105	-	-	-	-	-	-	-	144	16	G 3/8"	G 1/2"	2,5
S25-300-02L-800	S25-301-02L-800	G 1"LH	G 1"	23	200	-	70	20	105	-	-	-	-	-	-	-	144	16	G 3/8"	G 1/2"	2,5
S25-300-03F-800	S25-301-03F-800	-	G 1"	23	-	202	70	-	-	119	78	60	36	7	12	9	157	16	G 3/8"	G 1/2"	2,9
S32-300-01R-800	S32-301-01R-800	G 1 1/4"RH	G 1 1/4"	31	224	-	85	22	119	-	-	-	-	-	-	-	158	18	G 1/2"	G 3/4"	3,9
S32-300-02L-800	S32-301-02L-800	G 1 1/4"LH	G 1 1/4"	31	224	-	85	22	119	-	-	-	-	-	-	-	158	18	G 1/2"	G 3/4"	3,9
S32-300-03F-800	S32-301-03F-800	-	G 1 1/4"	31	-	225	85	-	-	133	94	70	44	8	12	11	172	18	G 1/2"	G 3/4"	4,4
S40-300-01R-800	S40-301-01R-800	G 1 1/2"RH	G 1 1/2"	36	256	-	92	24	132	-	-	-	-	-	-	-	177	20	G 3/4"	G 1"	5,4
S40-300-02L-800	S40-301-02L-800	G 1 1/2"LH	G 1 1/2"	36	256	-	92	24	132	-	-	-	-	-	-	-	177	20	G 3/4"	G 1"	5,4
S40-300-03F-800	S40-301-03F-800	-	G 1 1/2"	36	-	251	92	-	-	139	99	78	52	10	14	11	185	20	G 3/4"	G 1"	5,9
S50-300-01R-800	S50-301-01R-800	G 2"RH	G 2"	48	281	-	110	25	139	-	-	-	-	-	-	-	193	22	G 1"	G 1 1/4"	8,6
S50-300-02L-800	S50-301-02L-800	G 2"LH	G 2"	48	281	-	110	25	139	-	-	-	-	-	-	-	193	22	G 1"	G 1 1/4"	8,6
S50-300-03F-800	S50-301-03F-800	-	G 2"	48	-	283	110	-	-	154	120	95	65	10	14	11	208	22	G 1"	G 1 1/4"	9,4

型号		外形尺寸 双通路 旋转虹吸管																			Kg
N	D	A	B	D	E1	E2	F	I	L1	L2	M	N	Pv	Q	R	S	T	U	V	W	
S10-300-01R-810	S10-301-01R-810	G 3/8"RH	G 3/8"	9	129	-	43	13	73	-	-	-	-	-	-	-	97	20	6	G 1/4"	0,8
S10-300-02L-810	S10-301-02L-810	G 3/8"LH	G 3/8"	9	129	-	43	13	73	-	-	-	-	-	-	-	97	20	6	G 1/4"	0,8
S10-300-03F-810	S10-301-03F-810	-	G 3/8"	9	-	132	43	-	-	82	53	38	18	6	8	9	106	20	6	G 1/4"	0,9
S15-300-01R-810	S15-301-01R-810	G 1/2"RH	G 1/2"	13	146	-	55	13	82	-	-	-	-	-	-	-	110	22	10	G 3/8"	1,4
S15-300-02L-810	S15-301-02L-810	G 1/2"LH	G 1/2"	13	146	-	55	13	82	-	-	-	-	-	-	-	110	22	10	G 3/8"	1,4
S15-300-03F-810	S15-301-03F-810	-	G 1/2"	13	-	151	55	-	-	92	60	45	25	6	10	9	120	22	10	G 3/8"	1,6
S20-300-01R-810	S20-301-01R-810	G 3/4"RH	G 3/4"	18	173	-	64	16	94	-	-	-	-	-	-	-	129	24	13	G 1/2"	1,9
S20-300-02L-810	S20-301-02L-810	G 3/4"LH	G 3/4"	18	173	-	64	16	94	-	-	-	-	-	-	-	129	24	13	G 1/2"	1,9
S20-300-03F-810	S20-301-03F-810	-	G 3/4"	18	-	172	64	-	-	101	68	50	30	6	10	9	135	24	13	G 1/2"	2,1
S25-300-01R-810	S25-301-01R-810	G 1"RH	G 1"	23	200	-	70	20	105	-	-	-	-	-	-	-	148	25	16	G 1/2"	2,5
S25-300-02L-810	S25-301-02L-810	G 1"LH	G 1"	23	200	-	70	20	105	-	-	-	-	-	-	-	148	25	16	G 1/2"	2,5
S25-300-03F-810	S25-301-03F-810	-	G 1"	23	-	202	70	-	-	119	78	60	36	7	12	9	161	25	16	G 1/2"	2,9
S32-300-01R-810	S32-301-01R-810	G 1 1/4"RH	G 1 1/4"	31	224	-	85	22	119	-	-	-	-	-	-	-	162	26	22	G 3/4"	3,9
S32-300-02L-810	S32-301-02L-810	G 1 1/4"LH	G 1 1/4"	31	224	-	85	22	119	-	-	-	-	-	-	-	162	26	22	G 3/4"	3,9
S32-300-03F-810	S32-301-03F-810	-	G 1 1/4"	31	-	225	85	-	-	133	94	70	44	8	12	11	176	26	22	G 3/4"	4,4
S40-300-01R-810	S40-301-01R-810	G 1 1/2"RH	G 1 1/2"	36	256	-	92	24	132	-	-	-	-	-	-	-	183	30	26	G 1"	5,4
S40-300-02L-810	S40-301-02L-810	G 1 1/2"LH	G 1 1/2"	36	256	-	92	24	132	-	-	-	-	-	-	-	183	30	26	G 1"	5,4
S40-300-03F-810	S40-301-03F-810	-	G 1 1/2"	36	-	251	92	-	-	139	99	78	52	10	14	11	190	30	26	G 1"	5,9
S50-300-01R-810	S50-301-01R-810	G 2"RH	G 2"	48	281	-	110	25	139	-	-	-	-	-	-	-	199	34	32,2	G 1 1/4"	8,6
S50-300-02L-810	S50-301-02L-810	G 2"LH	G 2"	48	281	-	110	25	139	-	-	-	-	-	-	-	199	34	32,2	G 1 1/4"	8,6
S50-300-03F-810	S50-301-03F-810	-	G 2"	48	-	283	110	-	-	154	120	95	65	10	14	11	214	34	32,2	G 1 1/4"	9,4



UK ROTOFLUX LARGE CAPACITY
CN 大容量

耐压力 温度	Water	水
	2 1/2" + 3" ▶ 10 bar ⇔ 150 PSI	
	120°C ⇔ 250°F	
转速	2 1/2" + 3"	
	750	

UK ROTOFLUX LARGE CAPACITY

1 AND 2 PASSAGES 2 1/2" AND 3" SIZES

The unions Rotoflux S65 and S80, thanks to large free passages, are used when large fluid flows are needed. They are provided with balanced and microlapped seals made with hard-ende stainless steel and carbon graphite.

The special design of the seals allows to change, when needed only the seal rings so reducing at minimum servicing time and cost.

CN 大容量

不允许在不与ROTOFLUX 客户服务部门协商的情况下, 超过旋转接头的极限而使用。

1-2个通路, 尺寸2 1/2"至3"的两种接头形式可供客户选择。

S65和S80型旋转接头, 有大而通畅的管道, 可配合大流量使用。

它们配有微研磨的平衡密封圈, 使用加硬的不锈钢材质和石墨轴心。

得益于特殊的设计, 密封圈可以适时更换, 以节省维修时间和成本。

Microlapped and balanced seals

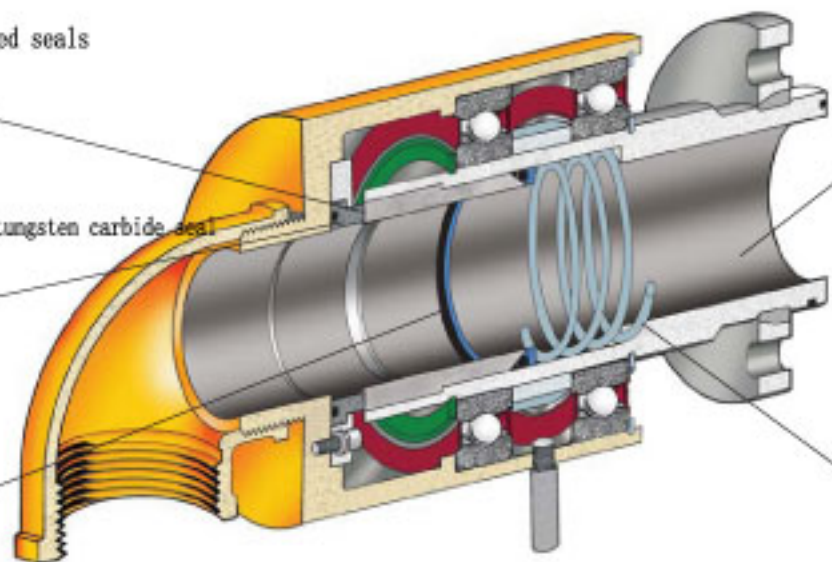
平衡密封环

Carbon graphite seal or tungsten carbide seal

石墨或碳化钨密封

O-Ring

O形密封圈

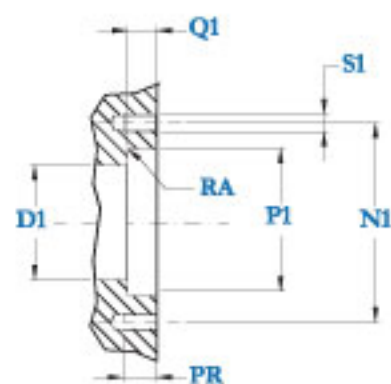


Stainless steel rotor

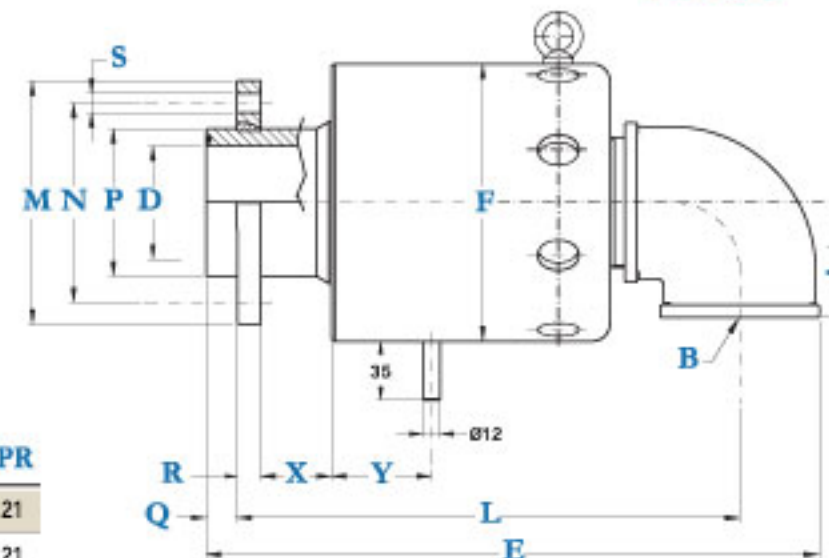
不锈钢转子

Spring

弹簧



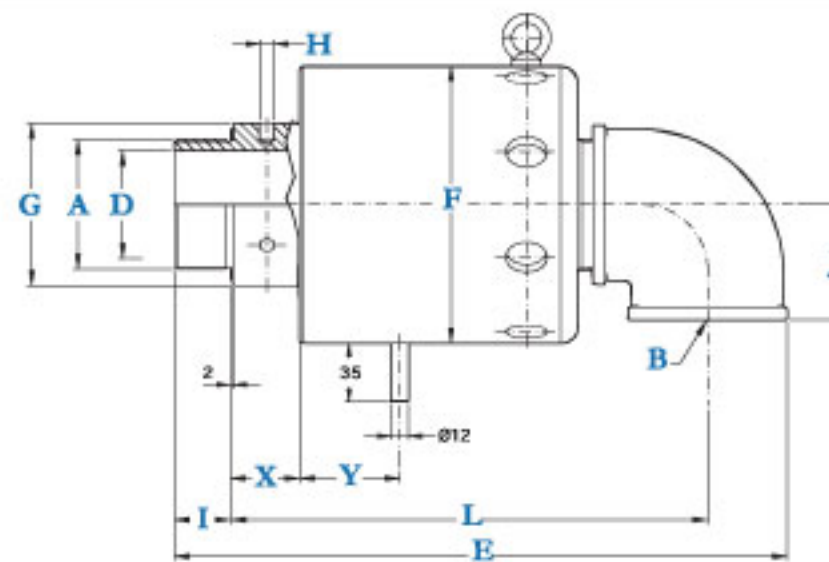
	D1	NI	PI	F8	RA	Q1	SI	PR
S65-300-03F	62	110	80	0,4	15	M12(øx60)	21	
S80-300-03F	77	135	100	0,4	20	M12(øx45)	21	



型号

外形尺寸
单通路

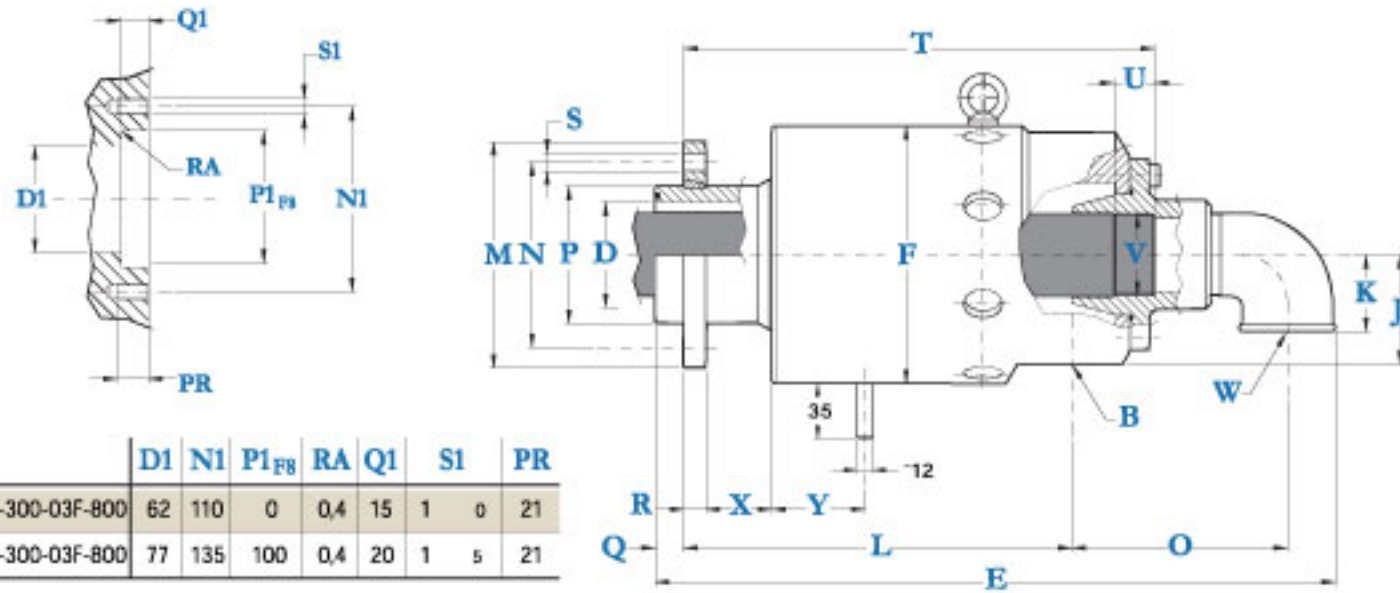
	A	B	D	E	F	G	H	I	J	K	L	M	N	O	P	Q	R	S	T	U	V	W	X	Y	Kg	
S65-300-03F	-	2 1/2"	62	350	166	-	-	-	69	-	290	139	110	-	80	16	14	13(øx60)	-	-	-	-	-	43	52	21
S80-300-03F	-	3"	77	411	202	-	-	-	78	-	336	165	135	-	100	21	16	13(øx45)	-	-	-	-	-	48	63	28



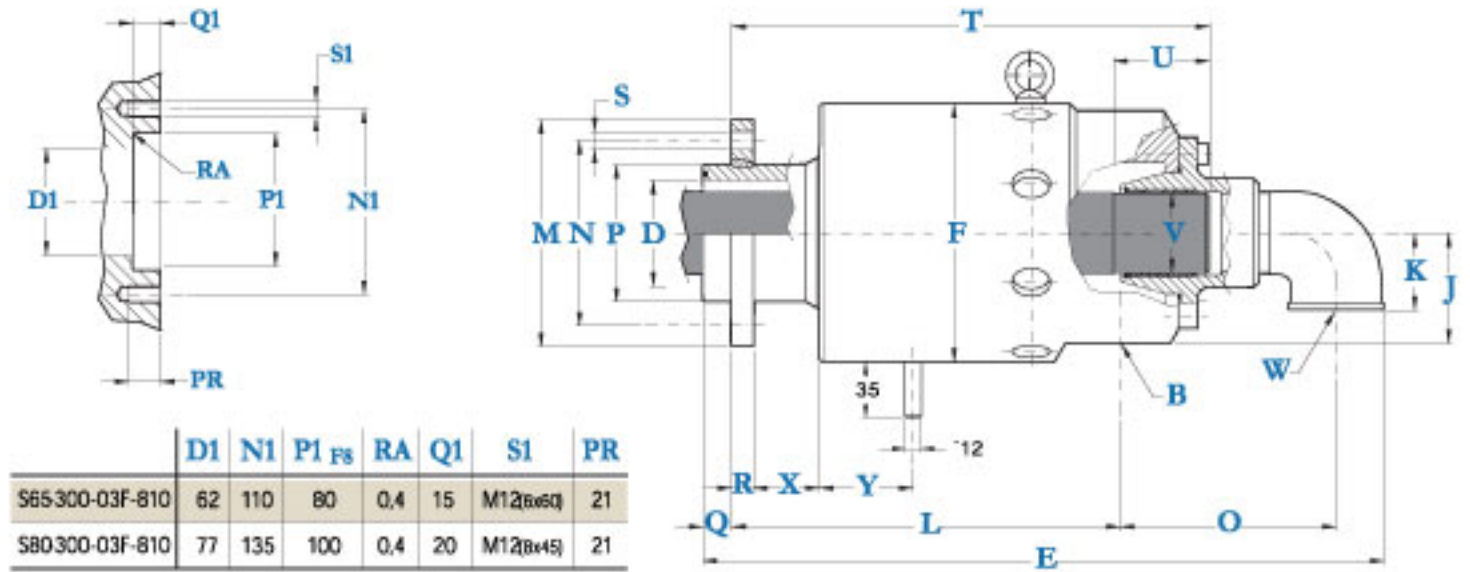
型号

外形尺寸
单通路

	A	B	D	E	F	G	H	I	J	K	L	M	N	O	P	Q	R	S	T	U	V	W	X	Y	Kg	
S65-300-01R	G2 1/2" RH	2 1/2"	61	350	166	90	8	33	69	-	273	-	-	-	-	-	-	-	-	-	-	-	-	40	52	18
S65-300-02L	G2 1/2" LH	2 1/2"	61	350	166	90	8(ø50)	33	69	-	273	-	-	-	-	-	-	-	-	-	-	-	-	40	52	18
S80-300-01R	G3" RH	3"	73	411	202	110	10	38	78	-	319	-	-	-	-	-	-	-	-	-	-	-	-	47	63	25
S80-300-02L	G3" LH	3"	73	411	202	110	10(ø50)	38	78	-	319	-	-	-	-	-	-	-	-	-	-	-	-	47	63	25



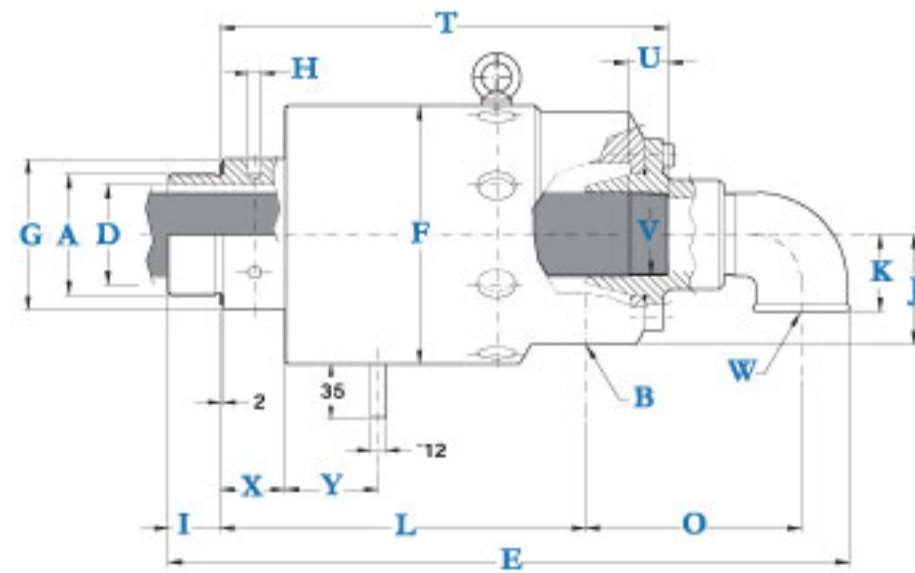
	D1	NI	PI _{FS}	RA	Q1	SI	PR	
S65-300-03F-800	62	110	0	0.4	15	1	0	21
S80-300-03F-800	77	135	100	0.4	20	1	5	21



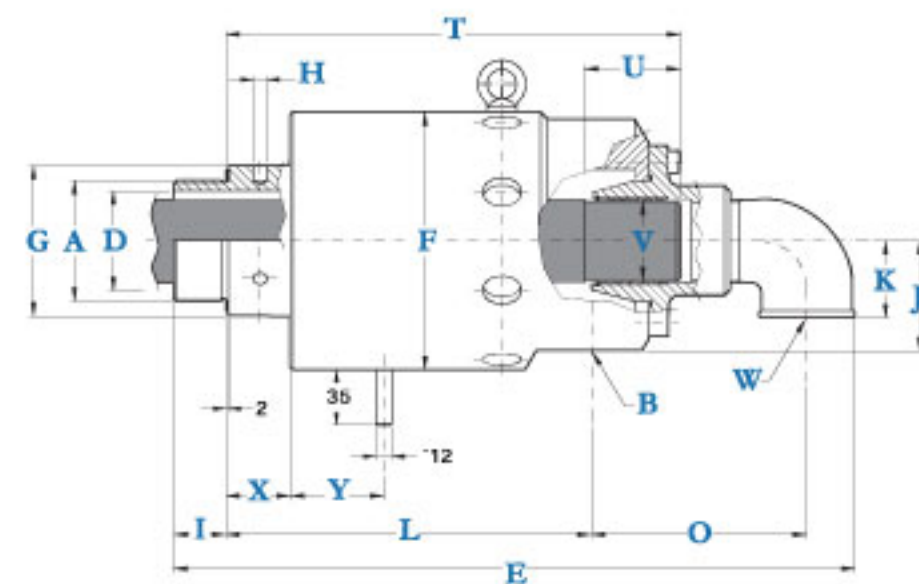
	D1	NI	PI _{FS}	RA	Q1	SI	PR
S65-300-03F-810	62	110	80	0.4	15	M12 _{6x6Q}	21
S80-300-03F-810	77	135	100	0.4	20	M12 _{8x4S}	21

型号	外形尺寸 双通路 固定虹吸管																			Kg					
	A	B	D	E	F	G	H	I	J	K	L	M	N	O	P _{FS}	Q	R	S	T		U	V	W	X	Y
S65-300-03F-800	-	1 1/2"	62	428	166	-	-	-	63	50	245	139	110	138	80	16	14	13 _{6x6Q}	296	25	1 1/2"	1 1/2"	43	52	26
S80-300-03F-800	-	2"	77	501	202	-	-	-	75	56	290	165	135	155	100	21	16	13 _{8x4S}	348	30	2"	2"	48	63	33

型号	外形尺寸 双通路 旋转虹吸管																			Kg					
	A	B	D	E	F	G	H	I	J	K	L	M	N	O	P _{FS}	Q	R	S	T		U	V	W	X	Y
S65-300-03F-810	-	1 1/2"	62	428	166	-	-	-	63	50	245	139	110	138	80	16	14	13 _{6x6Q}	299	60	46	1 1/2"	43	52	26
S80-300-03F-810	-	2"	77	501	202	-	-	-	75	56	290	165	135	155	100	21	16	13 _{8x4S}	353	70	58	2"	48	63	33



型号	外形尺寸 双通路 固定虹吸管																			Kg					
	A	B	D	E	F	G	H	I	J	K	L	M	N	O	P	Q	R	S	T		U	V	W	X	Y
S65-300-01R-800	G 2 1/2" RH	1 1/2"	61	428	166	90	8	33	63	50	228	-	-	138	-	-	-	-	279	25	1 1/2"	1 1/2"	40	52	23
S65-300-02L-800	G 2 1/2" LH	1 1/2"	61	428	166	90	8	33	63	50	228	-	-	138	-	-	-	-	279	25	1 1/2"	1 1/2"	40	52	23
S80-300-01R-800	G 3" RH	2"	73	501	202	110	10	38	75	56	273	-	-	155	-	-	-	-	331	30	2"	2"	47	63	30
S80-300-02L-800	G 3" LH	2"	73	501	202	110	10	38	75	56	273	-	-	155	-	-	-	-	331	30	2"	2"	47	63	30



型号	外形尺寸 双通路 旋转虹吸管																			Kg					
	A	B	D	E	F	G	H	I	J	K	L	M	N	O	P	Q	R	S	T		U	V	W	X	Y
S65-300-01R-810	G 2 1/2" RH	1 1/2"	61	428	166	90	8	33	63	50	228	-	-	138	-	-	-	-	282	60	46	1 1/2"	40	52	23
S65-300-02L-810	G 2 1/2" LH	1 1/2"	61	428	166	90	8	33	63	50	228	-	-	138	-	-	-	-	282	60	46	1 1/2"	40	52	23
S80-300-01R-810	G 3" RH	2"	73	501	202	110	10	38	75	56	273	-	-	155	-	-	-	-	336	70	58	2"	47	63	30
S80-300-02L-810	G 3" LH	2"	73	501	202	110	10	38	75	56	273	-	-	155	-	-	-	-	336	70	58	2"	47	63	30



UK ROTOFLUX FOR CONTINUOUS CASTING APPLICATIONS

CN 适用于钢铁工业冷却

耐压力	Water	水
温度	3/4" - 1 1/2" ▶ 10 bar ⇔ 150 PSI	
	120°C ⇔ 250°F	
转速	3/4" ÷ 1 1/2"	
	100	

UK ROTOFLUX FOR CONTINUOUS CASTING APPLICATIONS

1 OR 2 PASSAGES, SIZES 3/4" - 1" - 1 1/2"

The unions of the model Z are specifically designed to be mounted inside the cylinders of the continuous casting line. The seals, in tungsten carbide for dirty water service, are balanced, lapped and set to withstand to pressure peaks caused by steam bubbles or bumps of different kind.

The springs, located out of the fluid flow, avoid deposits and scales. Do not use the unions at max application limits without consulting ROTOFLUX.

CN 适用于钢铁工业冷却

不允许在不与ROTOFLUX 客户服务部门协商的情况下，超过旋转接头的极限而使用。

此型号为应用到特殊场合的旋转接头。因此，ROTOFLUX 对此进行了特别的设计和制造。

Z型旋转接头被装在轴心孔。减小装在气缸中的黄铜体的突出部分，而且使旋转经由此壳体，对不锈钢转子起固定作用。

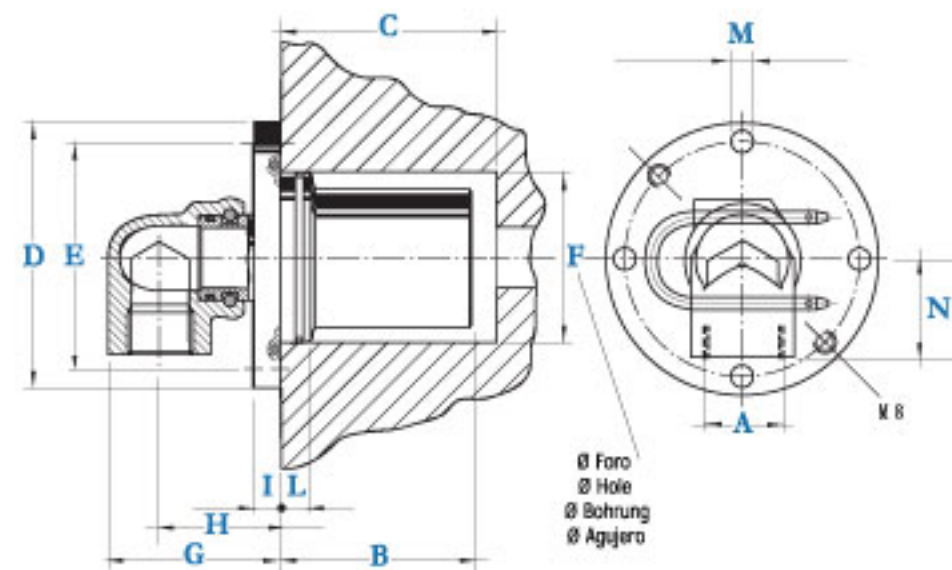
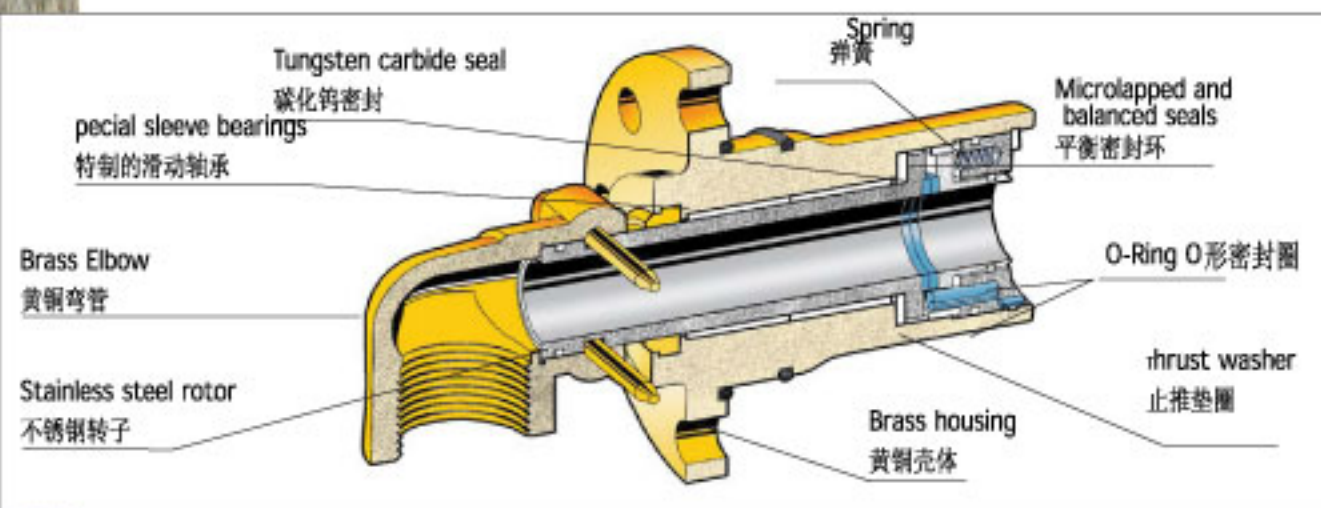
转子装在长的同心衬套中，加之碳化钨密封，可显著提高其使用寿命。甚至可以应用在过滤精度较差的环境中。

接头安装在一个缸体中，有余隙空间，避免瞬间冲击造成损坏的情况。

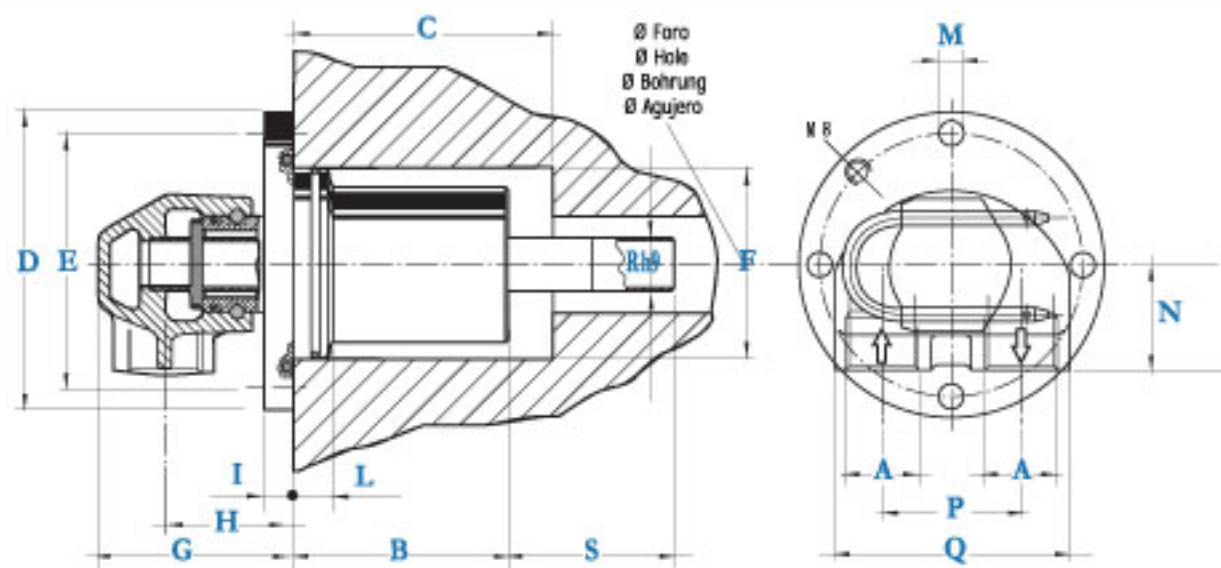
由于采用了微小尺寸搭接密封的设计，可降低转动所产生的摩擦力。

弹簧用于避免流体产生振动和噪音。

尺寸：3/4"、1"、1 1/2"，均可根据客户需要选择单通路形式或倍通路形式。



型号	外形尺寸 单通路													Kg
	A	B	C	D	E	F	G	H	I	L	M	N		
Z20-301-60Z	G 3/4"	60	63	86	71	50,10 - 50,20	70	52	8	16	9	28	1,5	
Z25-301-60Z	G 1"	78	81	108	90	71 - 71,15	71	50	10	12,5	9	40	2,3	
Z40-301-60Z	G 1 1/2"	87,5	91	110	92	71 - 71,15	90	61	10	12,5	9	45	4,5	



型号	外形尺寸 双通路															Kg	
	A	B	C	D	E	F	G	H	I	L	M	N	P	Q	R		
Z25-301-61Z-800	G 3/4"	78	81	108	90	71-71,15	71	47	10	12,5	9	40	51	86	19	64	3
Z40-301-61Z-800	G 1"	87,5	91	110	92	71-71,15	91	62	10	12,5	9	45	64	108	28	64	5



UK ROTOFLEX FOR AIR, VACUUM AND HYDRAULIC OIL
CN 适用于空气、真空和液压油

耐压力 温度	Air 空气	Vacuum 真空	Oil 油
	1/8" ÷ 2" ▶ 10 bar ⇨ 150 PSI	1/8" ÷ 2" ▶ 6,7 Kpa ⇨ 28"Hg	1/8" ÷ 1 1/2" ▶ 50 bar ⇨ 750 PSI 2" ▶ 40 bar ⇨ 600 PSI
	120°C ⇨ 250°F	120°C ⇨ 250°F	120°C ⇨ 250°F
转速	1/8" ÷ 3/4"	1"	1 1/4" ÷ 1 1/2"
	3.500	3.000	2.500
			2"
			750

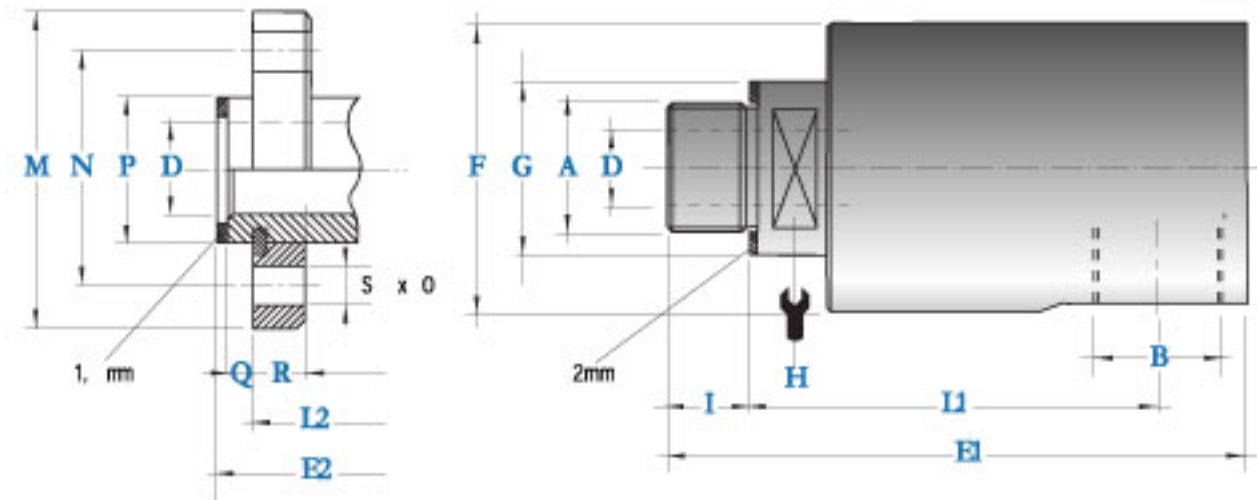
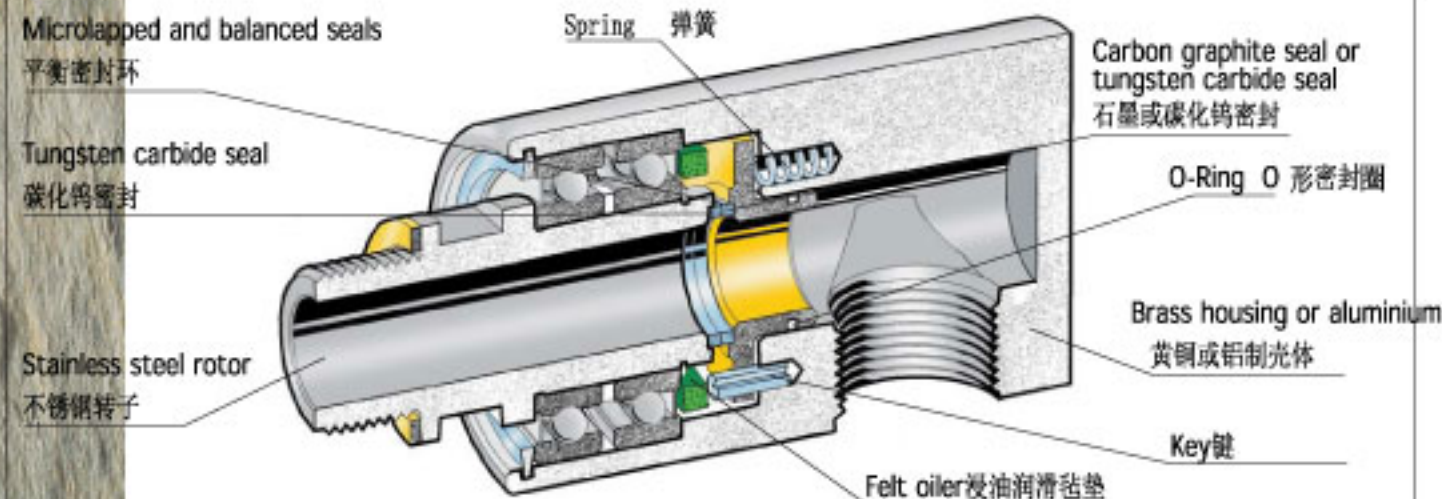
UK ROTOFLEX FOR AIR, VACUUM AND HYDRAULIC OIL

1 PASSAGE, SIZE FROM 1/8" TO 2"

The unions of the model T are provided with two different micro-lapped sealing assemblies.
 * N model (standard), with carbon graphite to tungsten carbide seals, for air, vacuum and hydraulic oil
 * D model (heavy duty) with tungsten carbide to tungsten carbide seals for hydraulic oil applications.
 The Model T6, very short it le provided with a center spring and N seals in stainless steel to carbon graphite or with D seal in stainless steel against bronze. Do not use the unions at max application limits without consulting ROTOFLUX.

CN 适用于空气、真空和液压油

不允许在不与ROTOFLUX 客户服务部门协商的情况下，超过旋转接头的极限而使用。
 N型-石墨密封（标准密封）应用于真空和冷却。
 D型-碳化钨密封（重负荷型）应用于液压油冷却。
 * 外壳为黄铜或铝，其他金属部件为不锈钢制造。
 * 弹簧用于防止由于流体产生的紊流和振动。
 * 旋转接头在空气和真空中工作时，由浸油毛毡提供密封。
 * 微小尺寸搭接形式和平衡密封环，可降低转动所产生的摩擦力。
 * 尺寸1/8" 至2" 两种接头形式（直式型式和法兰形式）可提供客户选择。



型号	外形尺寸 单通路																		
N	D	A	B	D	E1	E2	F	G	H	I	L1	L2	M	N	Φ7	Q	R	S	kg
T06-302-01R	T06-301-01R	G 1/4"RH	G 1/8"	3	3	-	2	20	1	11	3	-	-	-	-	-	-	-	0.2
T06-302-02L	T06-301-02L	G 1/4"LH	G 1/8"	3	3	-	2	20	1	11	3	-	-	-	-	-	-	-	0.2
T06-302-04R	T06-301-04R	M10 x 1 pilot G 1/8"		3	3	-	2	20	1	11	1	-	-	-	-	-	-	-	0.2
T08-302-01R	T08-301-01R	G 1/4"RH	G 1/4"		88	-	43	20	1	11	6	-	-	-	-	-	-	-	0.4
T08-302-02L	T08-301-02L	G 1/4"LH	G 1/4"		88	-	43	20	1	11	6	-	-	-	-	-	-	-	-
T10-302-01R	T10-301-01R	G 3/8"RH	G 3/8"		8	-	43	2	1	13	3	-	-	-	-	-	-	-	0.4
T10-302-02L	T10-301-02L	G 3/8"LH	G 3/8"		8	-	43	2	1	13	3	-	-	-	-	-	-	-	0.4
T10-302-03F	T10-301-03F	-	G 3/8"		-	102	43	-	-	-	-	82	3	38	18	6	8	-	0
T15-302-01R	T15-301-01R	G 1/2"RH	G 1/2"	13	120	-	30	24	13	82	-	-	-	-	-	-	-	-	1.3
T15-302-02L	T15-301-02L	G 1/2"LH	G 1/2"	13	120	-	30	24	13	82	-	-	-	-	-	-	-	-	1.3
T15-302-03F	T15-301-03F	-	G 1/2"	13	-	12	-	-	-	-	-	2	60	4	2	6	10	-	1
T20-302-01R	T20-301-01R	G 3/4"RH	G 3/4"	18	13	-	64	3	30	16	4	-	-	-	-	-	-	-	1.8
T20-302-02L	T20-301-02L	G 3/4"LH	G 3/4"	18	13	-	64	3	30	16	4	-	-	-	-	-	-	-	1.8
T20-302-03F	T20-301-03F	-	G 3/4"	18	-	13	64	-	-	-	-	101	68	0	30	6	10	-	2
T25-302-01R	T25-301-01R	G 1"RH	G 1"	23	162	-	0	4	36	20	10	-	-	-	-	-	-	-	2.2
T25-302-02L	T25-301-02L	G 1"LH	G 1"	23	162	-	0	4	36	20	10	-	-	-	-	-	-	-	2.2
T25-302-03F	T25-301-03F	-	G 1"	23	-	164	0	-	-	-	-	11	8	60	36	12	-	-	2.6
T32-302-01R	T32-301-01R	G 1 1/4"RH	G 1 1/4"	31	181	-	8	46	22	11	-	-	-	-	-	-	-	-	3
T32-302-02L	T32-301-02L	G 1 1/4"LH	G 1 1/4"	31	181	-	8	46	22	11	-	-	-	-	-	-	-	-	-
T32-302-03F	T32-301-03F	-	G 1 1/4"	31	-	182	8	-	-	-	-	133	4	0	44	8	12	11	4
T40-302-01R	T40-301-01R	G 1 1/2"RH	G 1 1/2"	36	208	-	2	60	0	24	132	-	-	-	-	-	-	-	-
T40-302-02L	T40-301-02L	G 1 1/2"LH	G 1 1/2"	36	208	-	2	60	0	24	132	-	-	-	-	-	-	-	-
T40-302-03F	T40-301-03F	-	G 1 1/2"	36	-	203	2	-	-	-	-	13	8	2	10	14	11	-	-
T50-302-01R	T50-301-01R	G 2"RH	G 2"	48	223	-	110	0	60	2	13	-	-	-	-	-	-	-	8.2
T50-302-02L	T50-301-02L	G 2"LH	G 2"	48	223	-	110	0	60	2	13	-	-	-	-	-	-	-	8.2
T50-302-03F	T50-301-03F	-	G 2"	48	-	224	110	-	-	-	-	14	11	6	10	14	11	-	-



UK ROTOFLUX IN THE SHAFT MOUNTING
CN 适用于轴和柱体

耐压力 温度	Air 水	Vacuum 真空	Oil 油	Water 水
	1/4" ÷ 1/2" ▶ 10 bar ⇨ 150 PSI	1/4" ÷ 1/2" ▶ 6,7 Kpa ⇨ 28" Hg	1/4" ÷ 1/2" ▶ 50 bar ⇨ 750 PSI	1/4" ÷ 1/2" ▶ 50 bar ⇨ 750 PSI
	120°C ⇨ 250°F	120°C ⇨ 250°F	120°C ⇨ 250°F	120°C ⇨ 250°F
转速	1/4" ÷ 1/2"	1/4" ÷ 1/2"	1/4" ÷ 1/2"	1/4" ÷ 1/2"
	3.500	3.500	3.500	3.500

ROTOFLUX IN THE SHAFT MOUNTING

1 PASSAGE, SIZEZ FROM 1/4" TO 1/2"

The unions of the model V are designed for inside the shaft mounting with short overhang. They are available with two different micro-lapped sealing assemblies:

- * N model (standard), with carbon graphite to tungsten carbide seals, for air, vacuum and hydraulic oil at 20 bar max pressure..
- * D model (heavy duty) with tungsten carbide to tungsten carbide seals for hydraulic oil applications.

The Model V6, very short it is provided with a center spring and with N seals in stainless steel to carbon graphite or with D seal in stainless steel against bronze. Do not use the unions at max application limits without consulting ROTOFLUX.

- * 不允许在不与ROTOFLUX 客户服务部门协商的情况下，超过旋转接头的极限而使用。
- * 在应用中，应避免液压油在峰值时的冲击，因为这样容易导致密封环的断裂。当使用于冷却水的压力超过 8bar 时，温度不要超过 100 度。
- * 此型号的旋转接头是通过两个微尺寸搭接的密封环实现密封。
- N 型-石墨密封（标准密封）应用于真空和冷却。
- D 型-碳化钨密封（重负荷型）应用于液压油和过滤精度较差的水的情形。
- * 此型号的旋转接头安装在轴或柱体中，并留出微小的外伸量以便于紧固。旋转接头锁在此端旋转，而接头的进水管是固定不动的。
- * 通常，黄铜壳体内部安装不锈钢弹簧，是为了防止冷却液冲走润滑油脂以及减少振动。

Micro-lapped and balanced seals

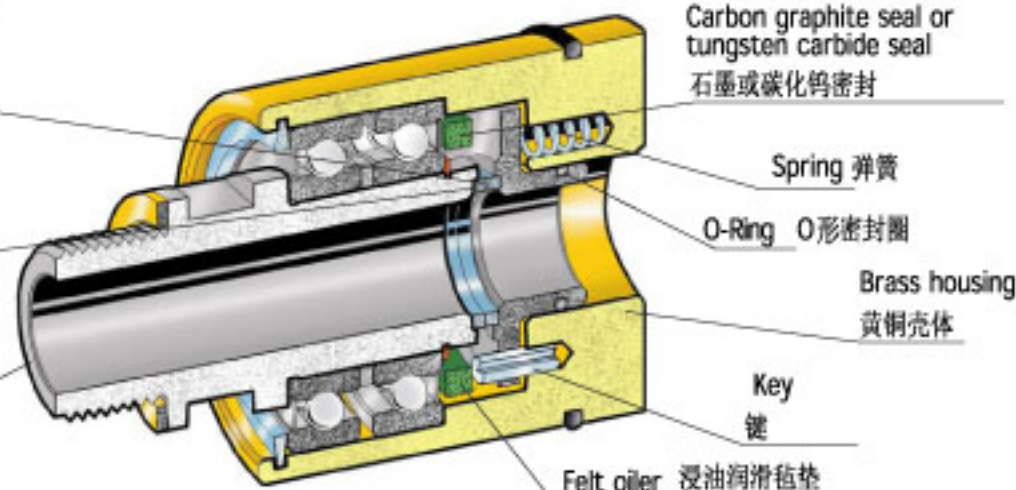
平衡密封环

tungsten carbide seal

碳化钨密封

Stainless steel rotor

不锈钢转子



Carbon graphite seal or tungsten carbide seal
石墨或碳化钨密封

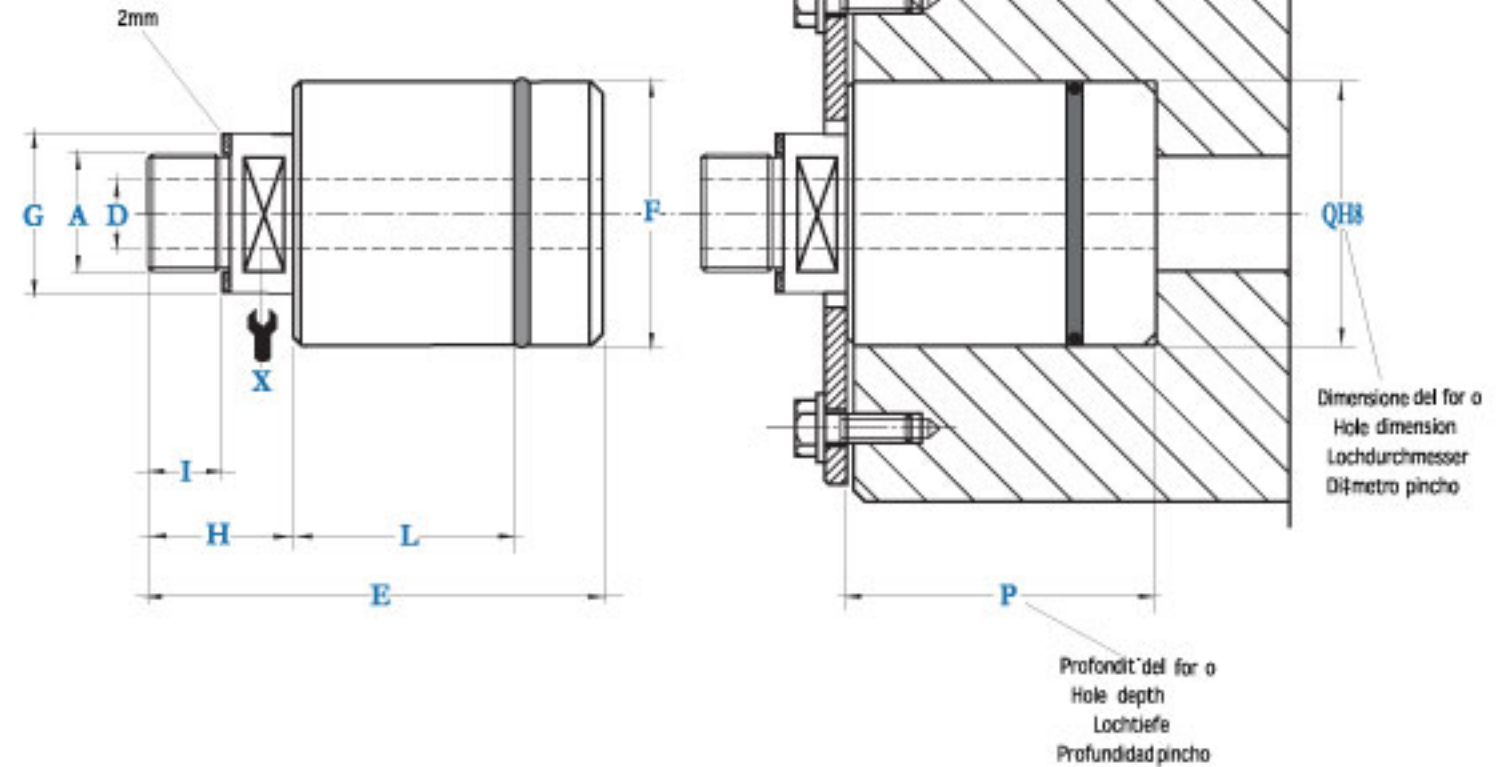
Spring 弹簧

O-Ring O形密封圈

Brass housing
黄铜壳体

Key 键

Felt oiler 浸油润滑毡垫



型号		外形尺寸 安装于轴或柱体											X	kg
N	D	A	D	E	F	G	H	I	L	P	QH8			
V06-302-01R	V06-301-01R	G 1/4" RH	3,5	71	28,4	20	23	11	28	47,5	28,5	15	0,4	
V08-302-01R	V08-301-01R	G 1/4" RH	7	82	44,3	20	23	11	50	58,5	44,5	17	0,6	
V10-302-01R	V10-301-01R	G 3/8" RH	9	91	49	2	2	13	54	63,5	49,2	17	0,7	
V15-302-01R	V15-301-01R	G 1/2" RH	13	96	58,5	30	28	13	58	67,5	58,7	24	1,3	



UK ROTOFLUX STAINLESS STEEL UNIONS

CN 不锈钢材质 适用于化学 制药 和食品工业

耐压力 温度	Liquid		液体	
	1/4" ÷ 1 1/2"	50 bar ⇨ 750 PSI	2"	40 bar ⇨ 600 PSI
	150°C ⇨ 300°F			
转速	1/4" ÷ 3/4"	1"	1 1/4" ÷ 1 1/2"	2"
	3.500	3.000	2.500	750

ROTOFLUX STAINLESS STEEL UNIONS

1 AND 2 PASSAGES, SIZES FROM 1/4" TO 2"

The unions of the model F, in stainless steel, are provided with two different micro-lapped sealing assemblies:

- * N model (standard) with carbon graphite to tungsten carbide seals for filtered fluids.
- * D model (heavy duty) with tungsten carbide to tungsten carbide seal for unfiltered fluids.

All the metallic parts in contact with the fluid, are in stainless steel. Flange rotore are available for rotations in both directions. Do not use the unions at max application limits without consulting ROTOFLUX.

*不允许在不与ROTOFLUX客户服务部门协商的情况下，超过旋转接头的极限而使用。建议在液压力达到8bar时，冷却水温度不得超过100度。

*在有正、反转向的应用时，建议选用有法兰的接头。

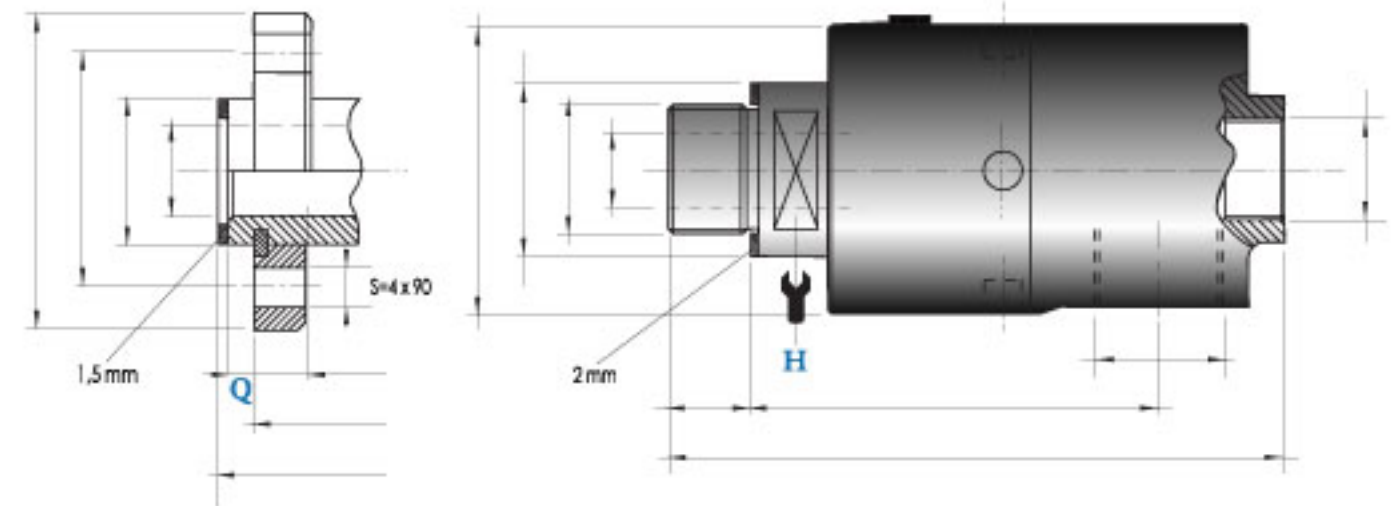
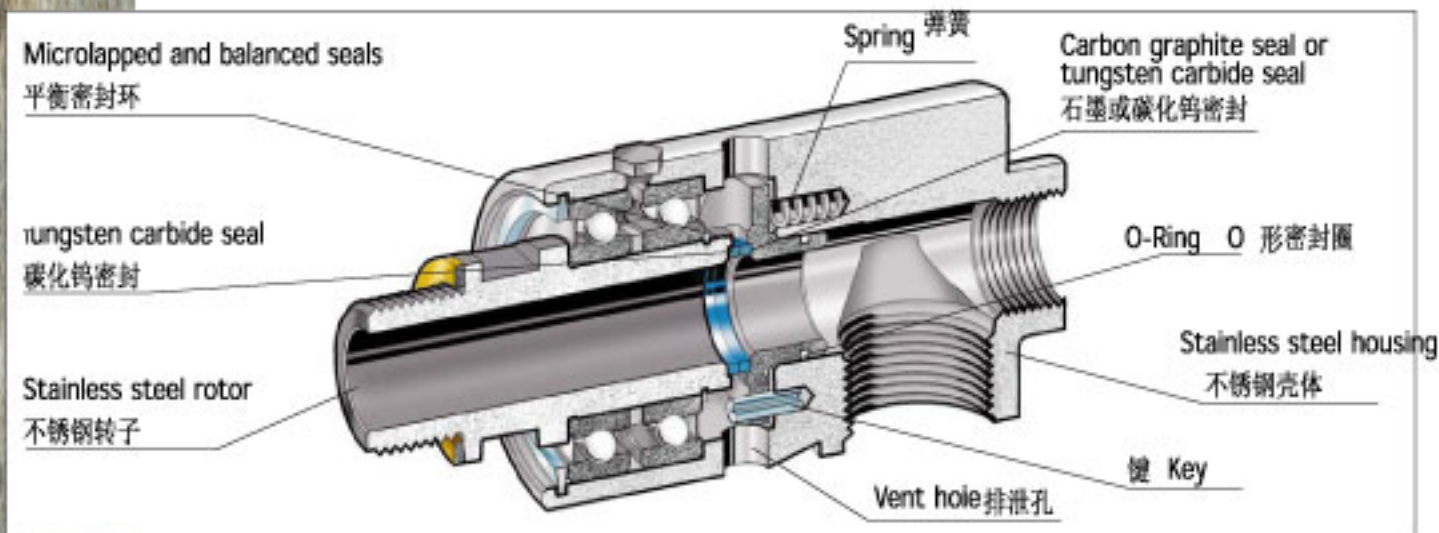
*此型号的旋转接头为不锈钢材质，适用于许多场合。还被大量应用到化学、制药和食品工业中。

*以下两种不同的密封组合形式均可供客户选用：

- N型-石墨密封（标准密封）
- D型-碳化钨密封（重负荷型密封）

*弹簧用于防止由于液体产生的紊流和振动。

*尺寸1/4"至2"的两种接头形式（直式型式和法兰形式）可供客户选择。



型号		外形尺寸 单通路																		kg
N	D	A	B	C	D	E1	E2	F	G	H	I	L1	L2	M	N	R _i	Q	R	S	
F08-300-01R	F08-301-01R	G 1/4" RH	G 1/4"	-	7	88	-	43	20	17	11	67	-	-	-	-	-	-	-	0.6
F08-300-02L	F08-301-02L	G 1/4" LH	G 1/4"	-	7	88	-	43	20	17	11	67	-	-	-	-	-	-	-	0.6
F10-300-01R	F10-301-01R	G 3/8" RH	G 3/8"	G 1/4"	9	103	-	43	25	17	13	73	-	-	-	-	-	-	-	0.7
F10-300-02L	F10-301-02L	G 3/8" LH	G 3/8"	G 1/4"	9	103	-	43	25	17	13	73	-	-	-	-	-	-	-	0.7
F10-300-03F	F10-301-03F	-	G 3/8"	G 1/4"	9	-	106	43	-	-	-	-	82	53	38	18	6	8	9	0.8
F15-300-01R	F15-301-01R	G 1/2" RH	G 1/2"	G 3/8"	13	116	-	55	30	24	13	82	-	-	-	-	-	-	-	1.3
F15-300-02L	F15-301-02L	G 1/2" LH	G 1/2"	G 3/8"	13	116	-	55	30	24	13	82	-	-	-	-	-	-	-	1.3
F15-300-03F	F15-301-03F	-	G 1/2"	G 3/8"	13	-	120	55	-	-	-	-	92	60	45	25	6	10	9	1.4
F20-300-01R	F20-301-01R	G 3/4" RH	G 3/4"	G 1/2"	18	136	-	64	37	30	16	94	-	-	-	-	-	-	-	1.9
F20-300-02L	F20-301-02L	G 3/4" LH	G 3/4"	G 1/2"	18	136	-	64	37	30	16	94	-	-	-	-	-	-	-	-
F20-300-03F	F20-301-03F	-	G 3/4"	G 1/2"	18	-	134	64	-	-	-	-	101	68	50	30	6	10	9	2.1
F25-300-01R	F25-301-01R	G 1" RH	G 1"	G 3/4"	23	158	-	70	45	36	20	105	-	-	-	-	-	-	-	2.4
F25-300-02L	F25-301-02L	G 1" LH	G 1"	G 3/4"	23	158	-	70	45	36	20	105	-	-	-	-	-	-	-	-
F25-300-03F	F25-301-03F	-	G 1"	G 3/4"	23	-	160	70	-	-	-	-	119	78	60	36	7	12	9	2.7
F32-300-01R	F32-301-01R	G 1 1/4" RH	G 1 1/4"	G 1"	31	178	-	85	55	46	22	119	-	-	-	-	-	-	-	4.7
F32-300-02L	F32-301-02L	G 1 1/4" LH	G 1 1/4"	G 1"	31	178	-	85	55	46	22	119	-	-	-	-	-	-	-	4.7
F32-300-03F	F32-301-03F	-	G 1 1/4"	G 1"	31	-	180	85	-	-	-	-	133	94	70	44	8	12	11	5.3
F40-300-01R	F40-301-01R	G 1 1/2" RH	G 1 1/2"	G 1 1/4"	36	199	-	100	60	50	24	132	-	-	-	-	-	-	-	6.6
F40-300-02L	F40-301-02L	G 1 1/2" LH	G 1 1/2"	G 1 1/4"	36	199	-	100	60	50	24	132	-	-	-	-	-	-	-	6.6
F40-300-03F	F40-301-03F	-	G 1 1/2"	G 1 1/4"	36	-	194	100	-	-	-	-	139	99	78	52	10	14	11	7.2
F50-300-01R	F50-301-01R	G 2" RH	G 2"	G 1 1/2"	48	213	-	110	70	60	25	139	-	-	-	-	-	-	-	8.2
F50-300-02L	F50-301-02L	G 2" LH	G 2"	G 1 1/2"	48	213	-	110	70	60	25	139	-	-	-	-	-	-	-	8.2
F50-300-03F	F50-301-03F	-	G 2"	G 1 1/2"	48	-	215	110	-	-	-	-	154	119	95	65	10	14	11	9



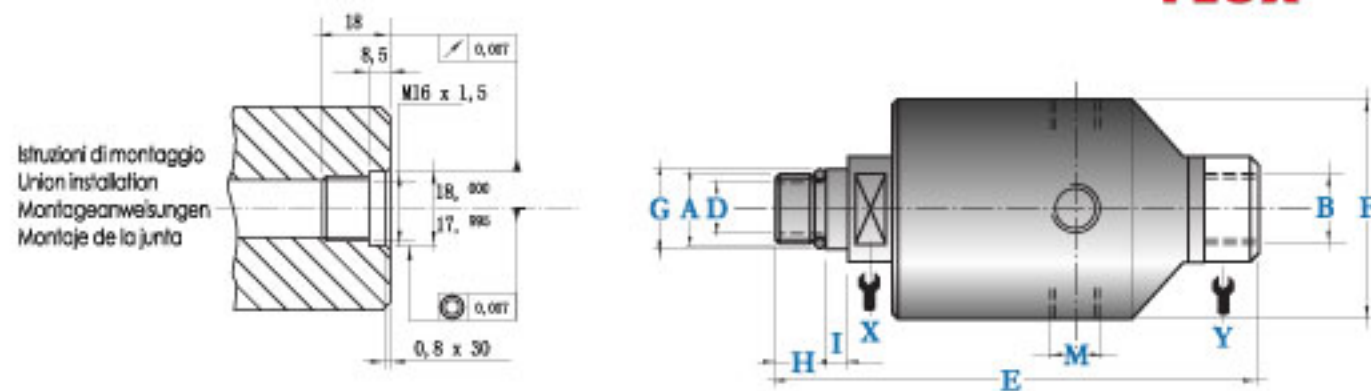
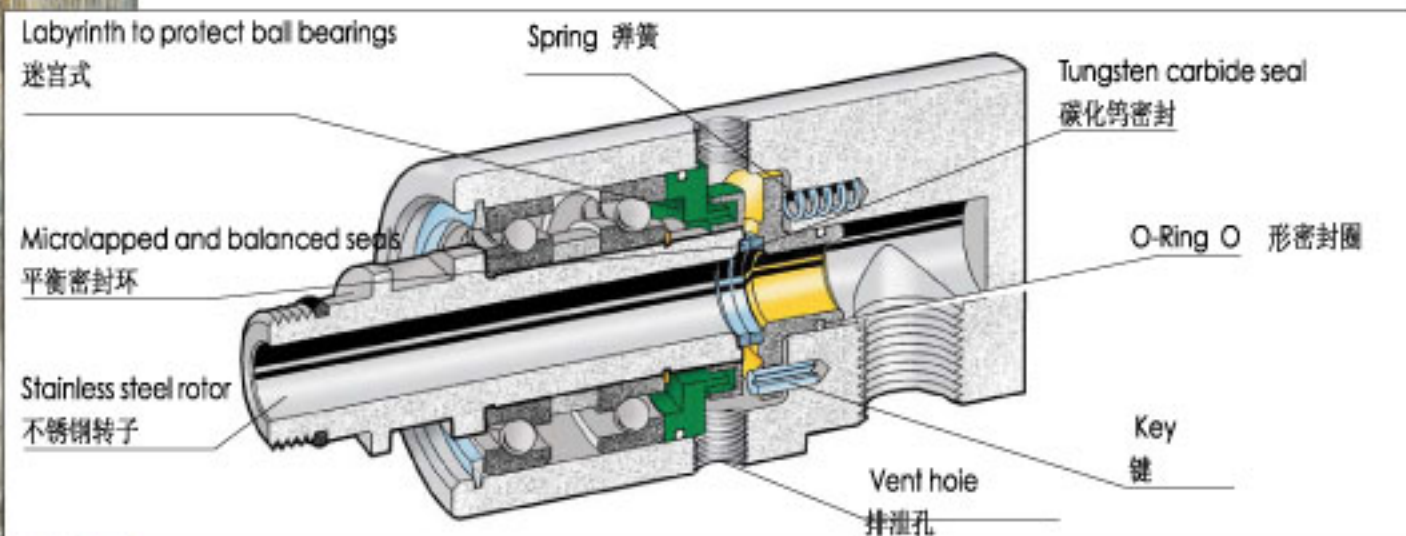
耐压力 温度	Coolant		冷却液	
		A10 ▶ 40 bar ⇨ 600 PSI	B10 ▶ 70 bar ⇨ 1.000 PSI	A08 ▶ 100 bar ⇨ 1.450 PSI
	120°C ⇨ 250°F	120°C ⇨ 250°F	120°C ⇨ 250°F	120°C ⇨ 250°F
转速	A 10 - 3/8"	B 10 - 3/8"	A 08 - 1/4"	B 08 - 1/4"
	10.000	15.000	15.000	20.000

ROTOFLUX FOR HIGH SPEED APPLICATIONS

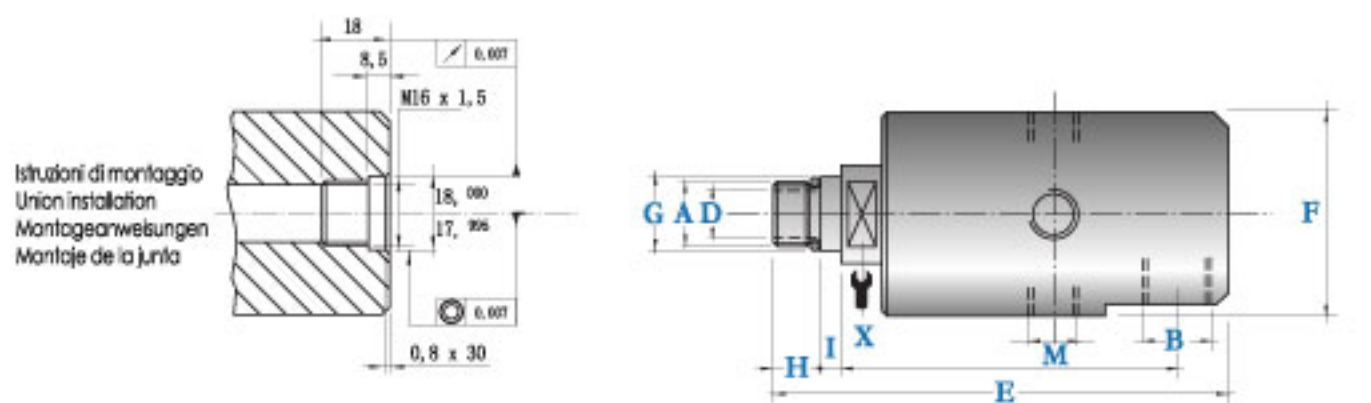
1 PASSAGE, SIZES 1/4" AND 3/8"

The unions of the models A and B are used for the passage of coolant through the machine tool spindles rotating at high speed. Well balanced seal assemblies model D, in tungsten carbide against tungsten carbide allow a low friction torque and long life even with a poor filtration of the coolant. Models A08 and B08, very short, are provided with a central spring. Do not use the unions at max application limits without consulting ROTOFLUX.

- * 不允许在不与ROTOFLUX 客户服务部门协商的情况下, 超过旋转接头的极限而使用。
- * 现在被普遍应用的A型和B型, 是用于冷却液情形, 并同心轴高速旋转。
- * 微小尺寸接触形式让平衡密封环在转动时摩擦力降至最低, 能够承受冷却液的巨大压力。
- * 碳化钨密封即使在使用过滤精度较的冷却液时, 仍然可以达到很长的使用寿命。但一定要保证在运转中要有持续冷却液的供应。
- * 弹簧用于防止由于流体产生的紊流和振动。
- * 选用的高速率、高精度轴承可以在高转速下长时间工作。
- * 所有零部件均为抗氧化材料, 工作中允许使用纯水。



型号	外形尺寸 直式接头											Kg
	A	B	D	E	F	G	H	I	M _{4x90}	X	Y	
A08-302-04R	M16X1,5 RH	G1/4"	5	108	34	18	11	5	G1/8"	17	30	0.3
A08-302-06L	M16X1,5 LH	G1/4"	5	108	34	18	11	5	G1/8"	17	30	0.3
A10-302-04R	M16X1,5 RH	G3/8"	9	110	43	18	11	5	G1/4"	17	22	0.5
A10-302-06L	M16X1,5 LH	G3/8"	9	110	43	18	11	5	G1/4"	17	22	0.5
B08-302-04R	M16X1,5 RH	G1/4"	5	116	44	18	11	5	G1/8"	20	24	0.6
B08-302-06L	M16X1,5 LH	G1/4"	5	116	44	18	11	5	G1/8"	20	24	0.6
B10-302-04R	M16X1,5 RH	G3/8"	9	130	54	18	11	5	G1/4"	20	32	0.8
B10-302-06L	M16X1,5 LH	G3/8"	9	130	54	18	11	5	G1/4"	20	32	0.8



型号	外形尺寸 90度接头											Kg
	A	B	D	E	F	G	H	I	L	M _{4x90}	X	
A08-301-04R	M16X1,5 RH	G1/4"	5	91	34	18	11	5	66	G1/8"	17	0.3
A08-301-06L	M16X1,5 LH	G1/4"	5	91	34	18	11	5	66	G1/8"	17	0.3
A10-301-04R	M16X1,5 RH	G3/8"	9	110	43	18	11	5	82	G1/4"	17	0.5
A10-301-06L	M16X1,5 LH	G3/8"	9	110	43	18	11	5	82	G1/4"	17	0.5
B08-301-04R	M16X1,5 RH	G1/4"	5	101	44	18	11	5	76	G1/8"	20	0.6
B08-301-06L	M16X1,5 LH	G1/4"	5	101	44	18	11	5	76	G1/8"	20	0.6
B10-301-04R	M16X1,5 RH	G3/8"	9	115	54	18	11	5	87	G1/4"	20	0.8
B10-301-06L	M16X1,5 LH	G3/8"	9	115	54	18	11	5	87	G1/4"	20	0.8



UK ROTOFLUX FOR HIGH SPEED APPLICATIONS AND DRY RUN

CN 适用于高转速和干转运行

耐压力 温度	Coolant		冷却液	
		A10 ▶ 40 bar ⇨ 600 PSI	B10 ▶ 70 bar ⇨ 1.000 PSI	A08 ▶ 100 bar ⇨ 1.450 PSI
	120°C ⇨ 250°F	120°C ⇨ 250°F	120°C ⇨ 250°F	120°C ⇨ 250°F
转速	A 10 - 3/8"	B 10 - 3/8"	A 08 - 1/4"	B 08 - 1/4"
		10.000	15.000	15.000

ROTOFLUX FOR HIGH SPEED APPLICATIONS AND DRY RUN

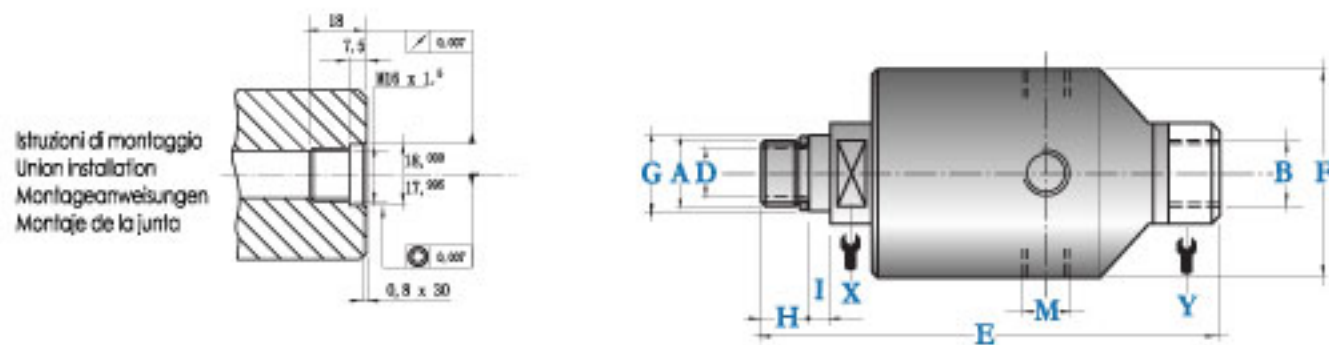
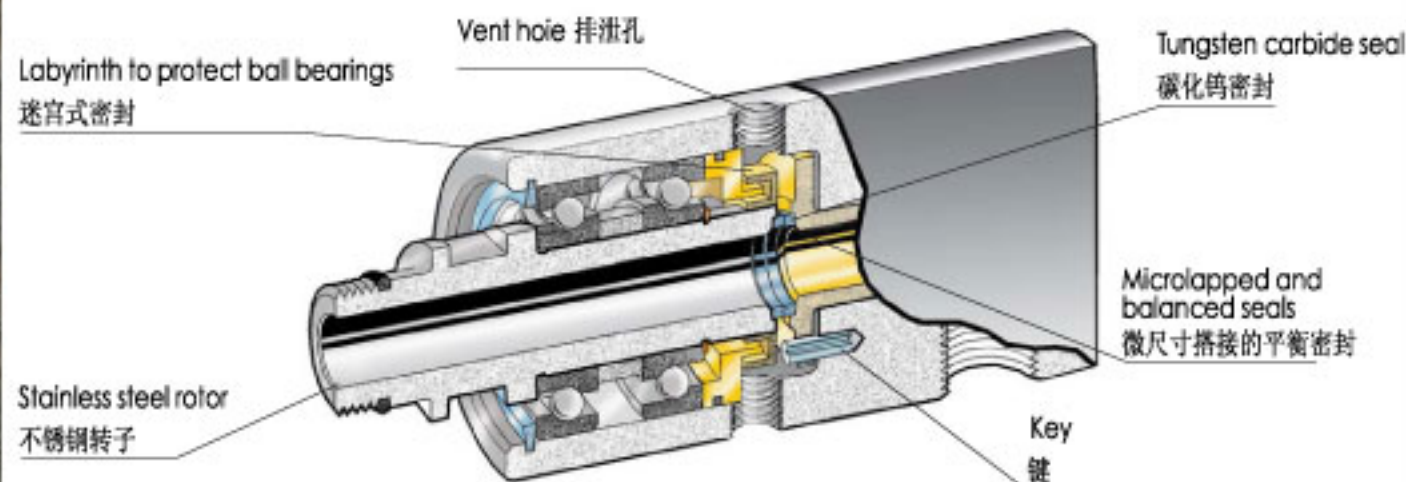
1 PASSAGE, SIZES 1/4" AND 3/8"

The unions of the models A and B are have been designed for machine tool spindles rotating at high speed with fluid passing through or dry when needed.

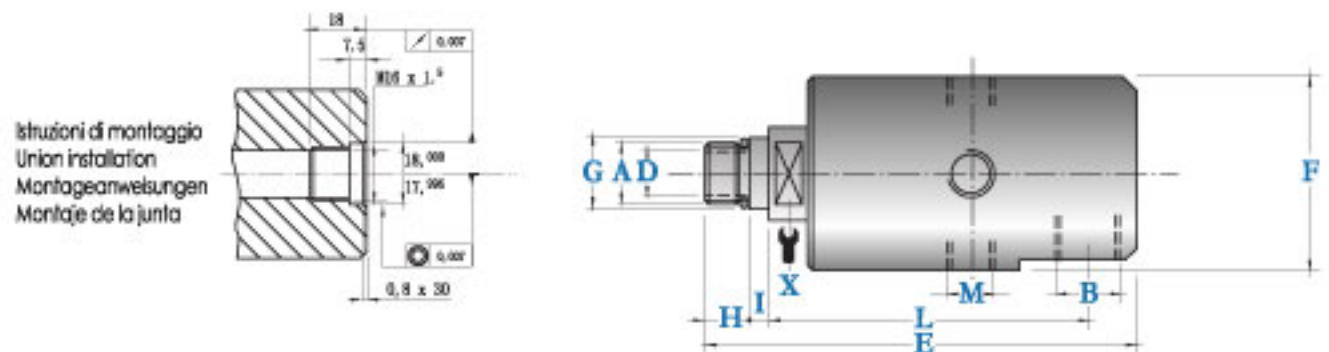
The seals, balanced and microlapped, remain always closed without problems both with fluid passing through (wet run) or without fluid (dry run).

Do not use the unions at max application limits without consulting Rotoflux.

- * 不允许在不与ROTOFLUX 客户服务部门协商的情况下，超过旋转接头的极限而使用。
- * 此类型为特殊的旋转接头，在中心不通入冷却液时可以高速干转。其结构设计简捷，冷却液即可提供必要的密封压力。当接头在无液体流量时，密封环面并不接触，转子几乎没有任何摩擦。当有冷却液输入，就会因流体流量产生一个轻的压力压紧密封面的弹性O形圈及密封面，防止液体泄漏。而流量停止则O形圈压力释放，密封环面自动分离。
- * 在操作刚启动和结束时，密封处可能会有少量冷却液滴落最终溢出。如果此情况发生，溢出的冷却液将会经过迷宫式密封环，再由排泄孔排出。
- * 可根据客户需要，将位置适当的一处排泄孔接上排泄管（共4处均布），其余3处用螺帽堵死。
- * 微小尺寸接触形式让平衡密封环只产生一个微小的扭矩，碳化钨密封即使在使用过滤精度较差的冷却液时，仍然可以达到很长的使用寿命。选用的高速率、高精密度轴承可以在高转速下长时间工作。
- * 所有零部件均为抗氧化材料，工作中允许使用纯水。
- * 直式接头和90° 接头均可由客户自行选用。



型号	外形尺寸 直式接头											
	A	B	D	E	F	G	H	I	M ₄₅₉₀	X	Y	Kg
A08-502-04R	M16X1,5 RH	G1/4"	5	108	34	18	11	5	G1/8"	17	30	0.3
A08-502-06L	M16X1,5 LH	G1/4"	5	108	34	18	11	5	G1/8"	17	30	0.3
A10-702-04R	M16X1,5 RH	G3/8"	9	125	43	18	11	5	G1/4"	17	22	0.5
A10-702-06L	M16X1,5 LH	G3/8"	9	125	43	18	11	5	G1/4"	17	22	0.5
B08-502-04R	M16X1,5 RH	G1/4"	5	116	44	18	11	5	G1/8"	20	24	0.6
B08-502-06L	M16X1,5 LH	G1/4"	5	116	44	18	11	5	G1/8"	20	24	0.6
B10-702-04R	M16X1,5 RH	G3/8"	9	130	54	18	11	5	G1/4"	20	32	0.8
B10-702-06L	M16X1,5 LH	G3/8"	9	130	54	18	11	5	G1/4"	20	32	0.8



型号	外形尺寸 90度接头											
	A	B	D	E	F	G	H	I	L	M ₄₅₉₀	X	Kg
A08-E01-04R	M16X1,5 RH	G1/4"	5	91	34	18	11	5	66	G1/8"	17	0.3
A08-E01-06L	M16X1,5 LH	G1/4"	5	91	34	18	11	5	66	G1/8"	17	0.3
A10-701-04L	M16X1,5 RH	G3/8"	9	110	43	18	11	5	82	G1/4"	17	0.5
A10-701-06L	M16X1,5 LH	G3/8"	9	110	43	18	11	5	82	G1/4"	17	0.5
B08-E01-04R	M16X1,5 RH	G1/4"	5	101	44	18	11	5	76	G1/8"	20	0.6
B08-E01-06L	M16X1,5 LH	G1/4"	5	101	44	18	11	5	76	G1/8"	20	0.6
B10-701-04R	M16X1,5 RH	G3/8"	9	115	54	18	11	5	87	G1/4"	20	0.8
B10-701-06L	M16X1,5 LH	G3/8"	9	115	54	18	11	5	87	G1/4"	20	0.8



UK ROTOFLUX FOR HIGH SPEED MACHINE TOOLS APPLICATIONS

CN 适用于高转速及机床行业

耐压力 温度	Coolant	冷却液
	100 bar ⇔ 1,450 PSI	
	90°C ⇔ 195°F	
转速	30,000	

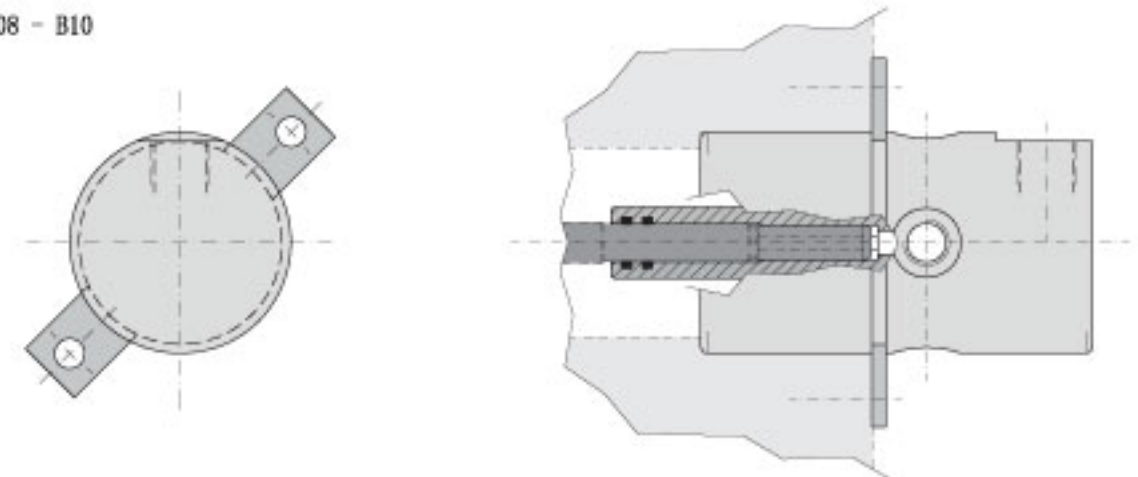
ROTOFLUX FOR HIGH SPEED MACHINE TOOLS APPLICATIONS

This kind of ROTOFLUX unions are used to cool the spindless of the machine tools. The VERY special design allows to keep at the minimum the space required for their installation. For further informations please fill the application sheet.

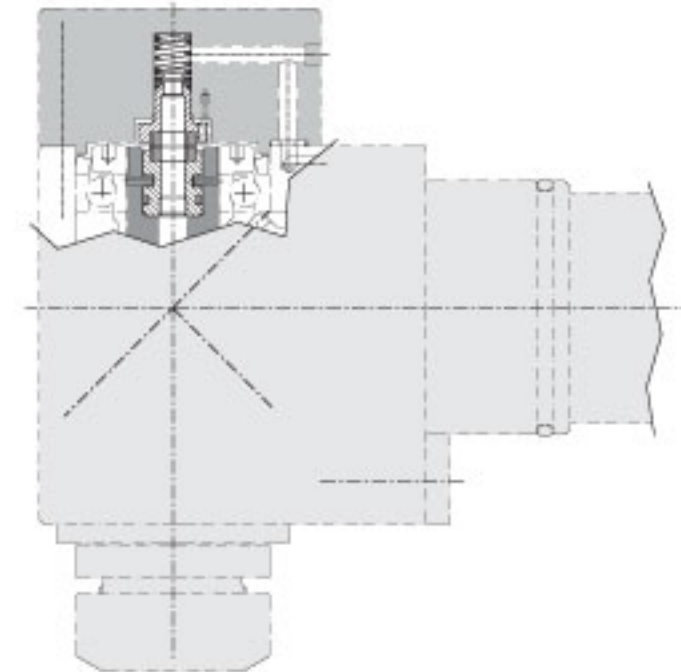
- * 此类型旋转接头，可配合客户主轴及特殊刀具设计制作。
- * 附表所列产品规格使用于有空间限制的应用。
- * 如有特殊需求请填写下列客户咨询表并传真至我司，ROTOFLUX 人员将会与您联系。

Company 公司名称	Mr. 姓名
Tel. 电话	Fax 传真
E-mail 电子邮件	Web site 网址
Media 介质	Filtration 过滤条件
Pressure 压力条件	Temp. 温度条件
Speed 转速条件	Application 应用场合

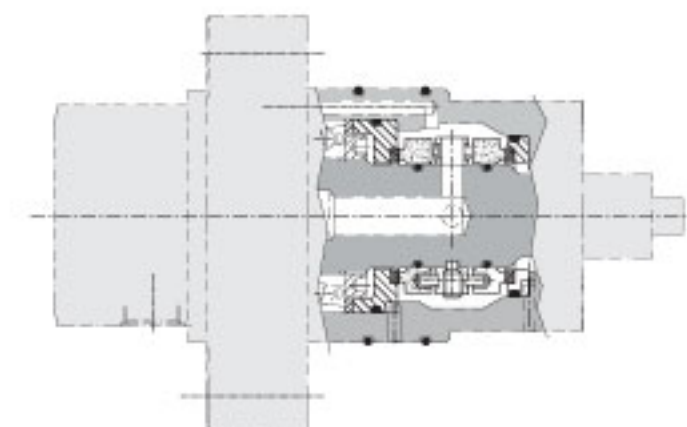
ROTOFLUX B08 - B10



ROTOFLUX K08 - K10



ROTOFLUX K08 - K10





UK ROTOFLUX DOUBLE PASSAGE FOR AIR, VACUUM AND HYDRAULIC OIL
CN 适用于空气 真空和液压油 双通路

耐压力 温度	Air	空气	Vacuum	真空	Oil	油
	10 bar ⇔ 150 PSI		6,7 Kpa ⇔ 28" Hg		10 bar ⇔ 150 PSI	
	120°C ⇔ 250°F		120°C ⇔ 250°F		120°C ⇔ 250°F	
转速						
	1.500		1.500		3.500	

ROTOFLUX DOUBLE PASSAGE FOR AIR, VACUUM AND HYDRAULIC OIL

2 PASSAGES SIZES 1/4" AND 1/2"

The ROTOFLUX union model D15 with two separate passages are used to operate clutches or rotating pistons with air or oil. The same type of fluid must be used for the two passages to avoid eventual mixtures. These unions are available with two different kind of seals:

Seals N (normal) in carbon graphite to tungsten carbide for air and vacuum applications.

Seals D (heavy duty seals) in tungsten carbide to tungsten carbide for hydraulic oil

Do not use the unions at max application limits without consulting ROTOFLUX.

不允许在不与ROTOFLUX 客户服务部门协商的情况下，超过旋转接头的极限而使用。

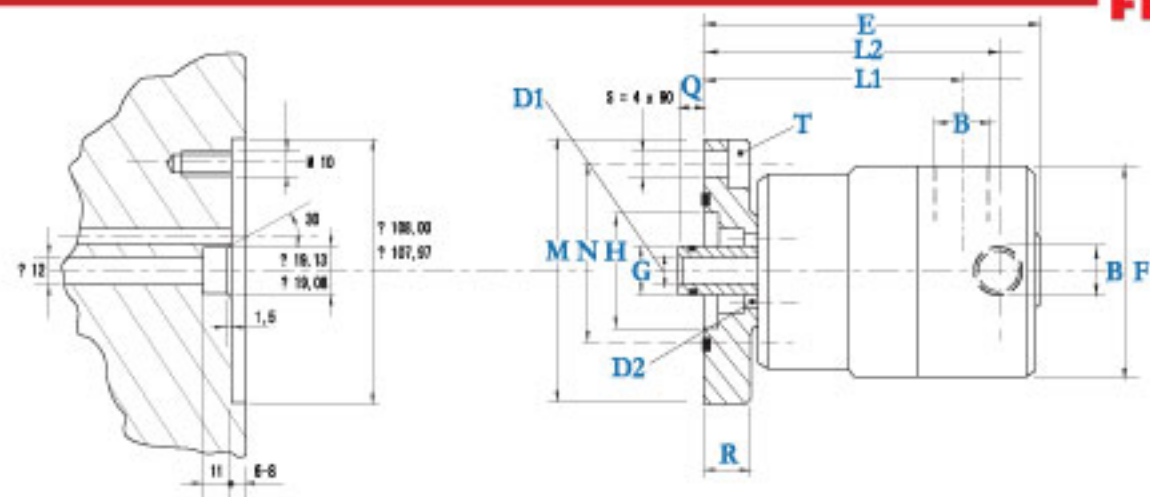
双通路，尺寸 1/4"至1/2"的两种接头形式可供客户选择。

D15型号的旋转接头有两个独立通道用于离合器操作和空气、油喷嘴器活塞。为避免可能的混合同一类型流体必须走两个通道经过。

以下两种不同的密封组合形式均可供客户选用：

N型-石墨密封（标准密封）应用于真空和空冷。

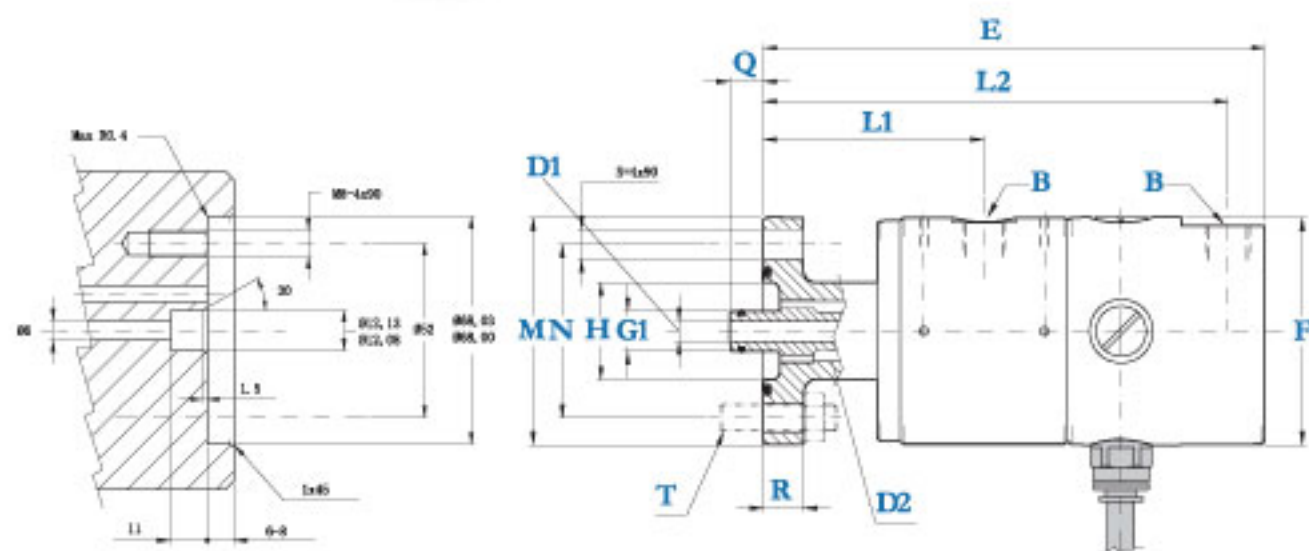
D型-碳化钨密封（重负荷型）应用于液压油。



型号		外形尺寸													双通路		
N	D	B	D1	D2	E	F	G	H	L1	L2	M8	N	Q	R	S	T	kg
D15-302-03F	D15-301-03F	G 1/2"	12 (13 mm ²)	4x10 fori (26 mm ²)	135	84	19,05 19,00	48	102	118	108	90,5	10	19	11	M10	3



UK DOUBLE PASSAGE FOR TWO DIFFERENT FLUID
CN 双通路适用两种不同的流体



型号		外形尺寸													双通路适用两种不同流体		
N	D	B	D1	D2	E	F	G	H	L1	L2	M8	N	Q	R	S	T	kg
D08-300-04F	G 1/4"	6	6 (28 mm ²)	- (40 mm ²)	150	68	12	29	66	139	68	52	10	12	9	M8	1,5



UK ROTOFLUX AROUND THE SHAFT UNION FOR WATER, AIR, VACUUM, HYDRAULIC OIL
CN 适用于水 空气 真空 液压油 (贯装轴安装)

耐压力 温度	Air 空气	Vacuum 真空	Oil 油	Water 水
	10 bar ⇔ 150 PSI	6,7 Kpa ⇔ 28" Hg	20 bar ⇔ 290 PSI	20 bar ⇔ 290 PSI
	120°C ⇔ 250°F	120°C ⇔ 250°F	120°C ⇔ 250°F	120°C ⇔ 250°F
转速	750	750	750	750

ROTOFLUX AROUND THE SHAFT UNION FOR WATER, AIR, VACUUM, HYDRAULIC OIL
 1 PASSAGE, SIZES 1/4"

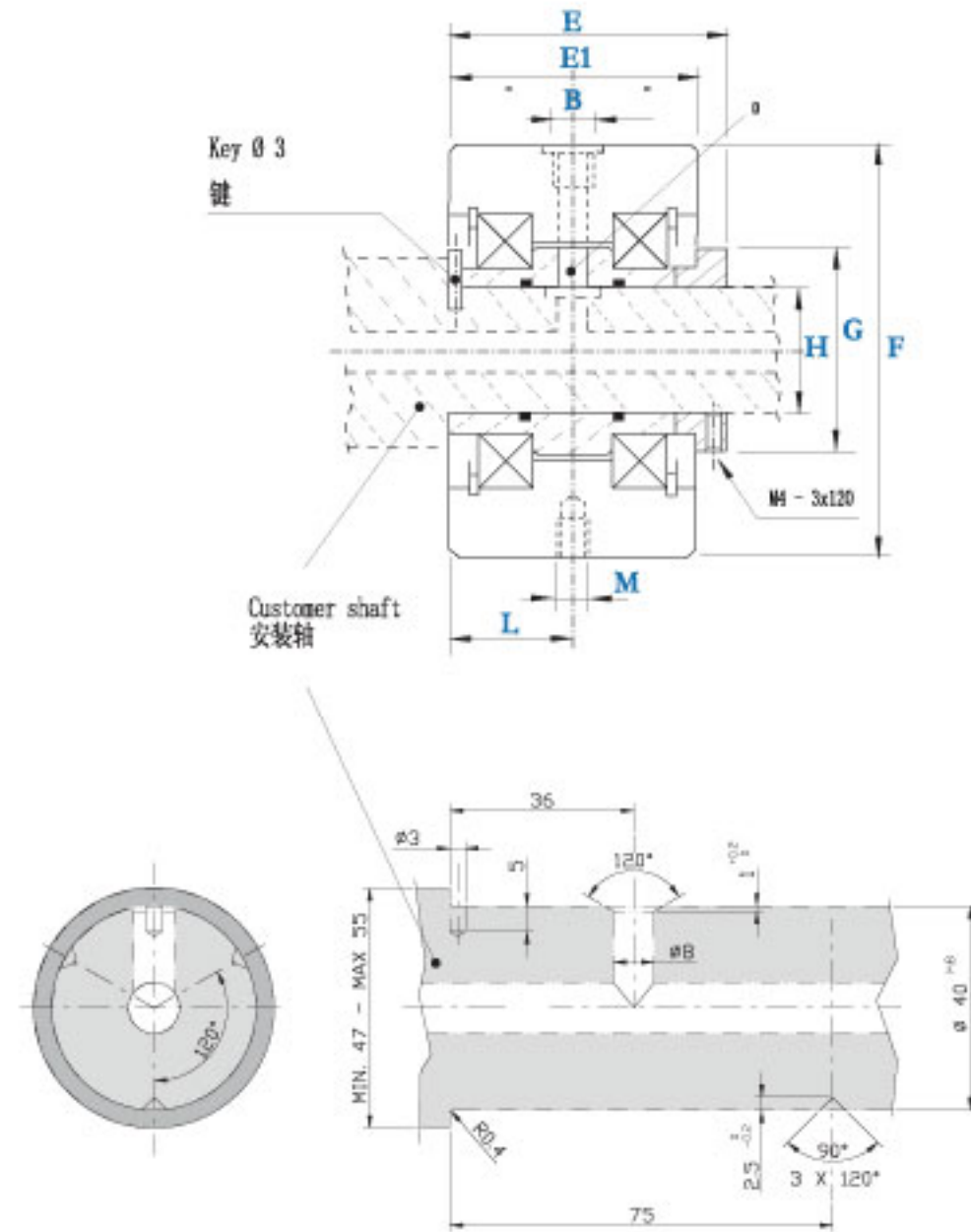
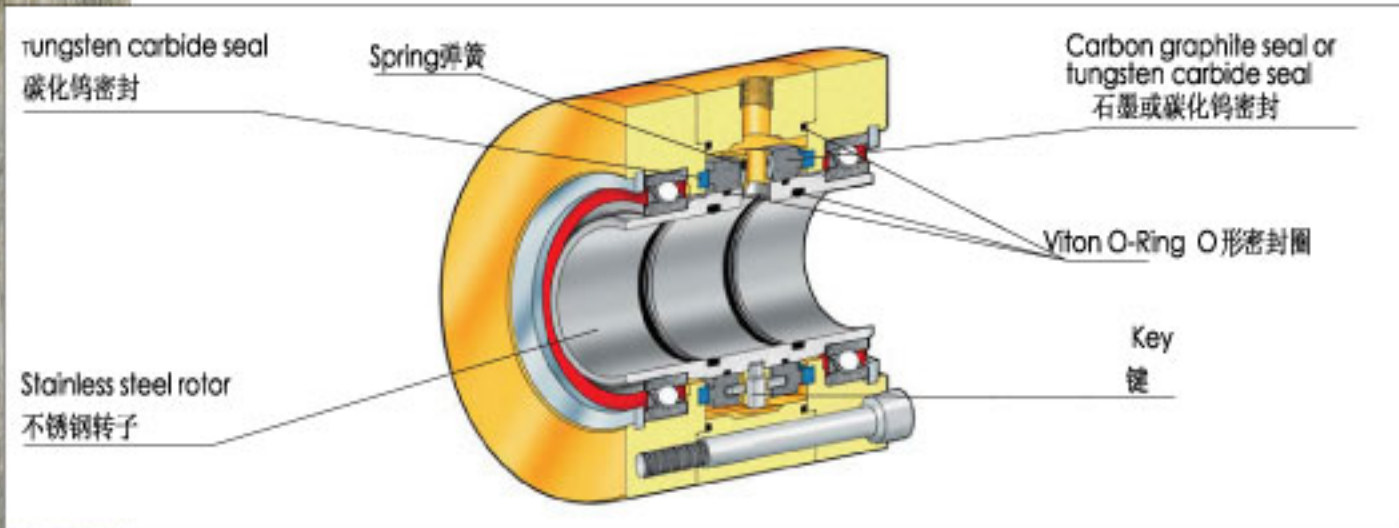
The around the shaft unions Rotoflux model R are used when it is impossible to fit any standard union at the shaft end.

They are provided with 3 different seal assemblies.

- tungsten carbide to carbon graphite specific for air and vacuum service
- tungsten carbide to carbon graphite specific for air and vacuum
- tungsten carbide to tungsten carbide for hydraulic oil.

Do not use the unions at max operating limits without consulting Rotoflux customer service.

- * 不允许在不与ROTOFLUX 客户服务部门协商的情况下, 超过旋转接头的极限而使用。
- * 单一通路 1/4"
- * 当标准型号的旋转接头无法安装在轴的底部时, 可以使用R型号的旋转接头。
- * 以下三种不同的密封组合形式均可供客户选用:
 N型 - 石墨密封 (标准密封) 应用于水冷。
 N型 - 石墨密封 (标准密封) 应用于真空和空冷。
 D型 - 碳化钨密封 (重负荷型) 应用于液压油。



型号	外形尺寸											
	贯穿轴											
	B	D	E	E1	F	G	H	L	L2	M	kg	
水	R06-1300-F40	G1/4"	5	78	72	108	59,5	40,08 40,05	36	139	M6	3
空气及真空	R06-1302-F40	G1/4"	5	78	72	108	59,5	40,08 40,05	36	139	M6	3
油	R06-1301-F40	G1/4"	5	78	72	108	59,5	40,08 40,05	36	139	M6	3



UK ROTOFLEX FOR HIGH PRESSURE AND LOW SPEED, SINGLE AND DOUBLE PASSAGE

CN 适用于高压力低转速，单一和双通路

耐压力 温度	Air 空气	Vacuum 真空	Oil 油	Water 水
	10 bar ⇒ 150 PSI	6,7 Kpa ⇒ 28" Hg	250 bar ⇒ 3.600 PSI	10 bar ⇒ 150 PSI
	120°C ⇒ 250°F	120°C ⇒ 250°F	120°C ⇒ 250°F	120°C ⇒ 250°F
转速	250	250	60 bar ⇒ 850 PSI ▶ 250 250 bar ⇒ 3.600 PSI ▶ 10	250

ROTOFLUX FOR HIGH PRESSURE AND LOW SPEED

SIZES FROM 1/4" TO 3/4"

The ROTOFLEX unions model M, thanks to the special design of the seals and the ground, hardened and lapped, surface of the rotor, may operate with low friction and wear, at low rotation speed with high fluid pressure, even for long time.

Also they may remain inactive for long periods without seizing.

An antirotation pin is provided to prevent the rotation; under pressure surges, and, at the max suggested operating limits, without consulting the ROTOFLEX customer service.

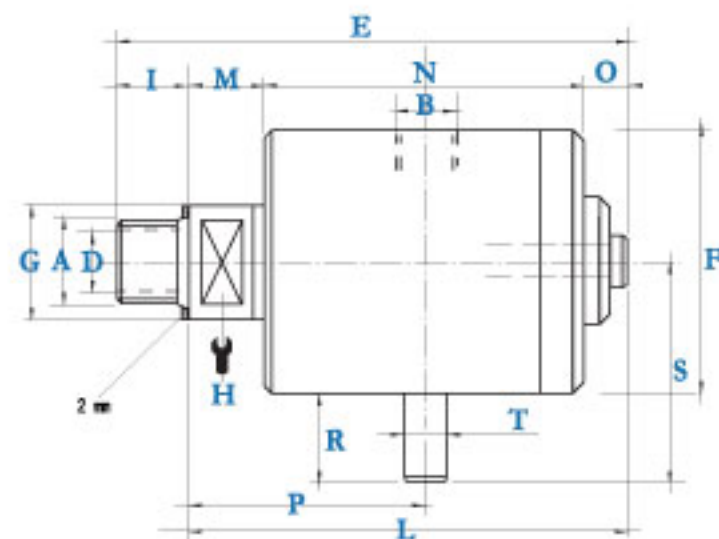
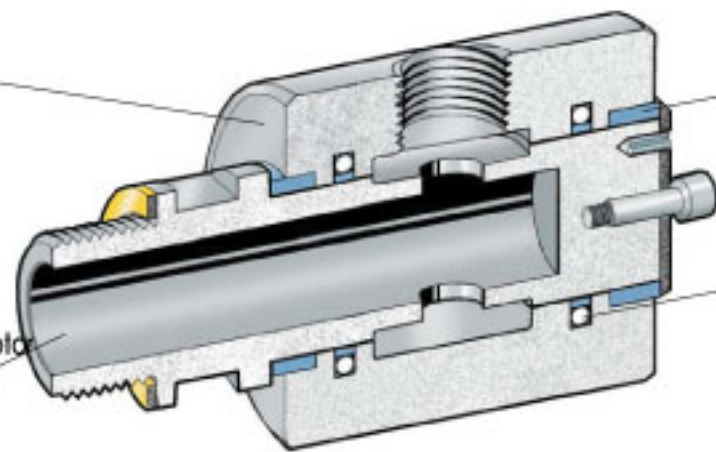
- 在不与ROTOFLUX 客户服务部门协商的情况下，不允许超过旋转接头的极限而运转。
- 由一个开槽的定位销防止旋转接头本体旋转，而不是通过锁紧端部螺丝防止转动的。
- 此类型旋转接头应用于低转速、高压力的场合。
- 其密封是通过径向的环形滑座和O形密封环组合来实现的。O形环提供静态密封，而环形滑座提供动态密封。此组合形式会产生一个较小的摩擦力。此外，要防止于无转动的情形下供给流体，而造成密封件损坏。
- 此型号中，接头尺寸 1/4"-3/4"可供客户选用。

Aluminium housing
铝壳体

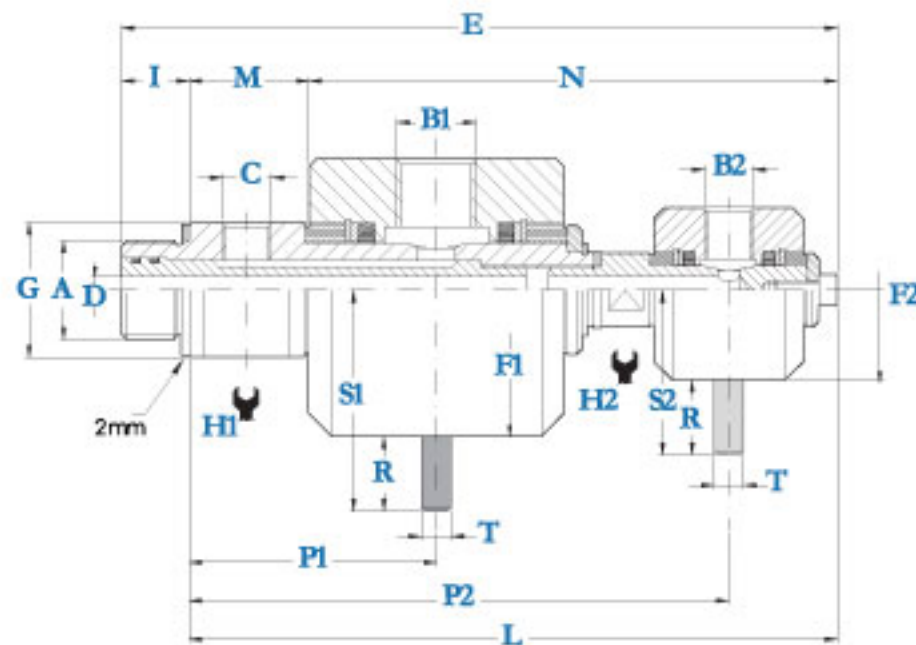
Bushing
衬套

O-Ring + PTFE Ring
O形密封圈-PTFE密封圈

Hardened stainless steel rotor
加硬不锈钢转子



型 号	外 形 尺 寸															kg	
	单通路																
	A	B	D	E	F	G	H	I	L	M	N	O	P	R	S	T	
M108-000-01R	G1/4" RH	G1/4"	7	77	48	19,7	17	14	63	14	40	9	34	20	44	8	0,4
M110-000-01R	G3/8" RH	G3/8"	10	88	58	24,7	22	14	74	15	49	10	39,5	20	49	8	0,5
M115-000-01R	G1/2" RH	G1/2"	12	88	58	27,5	24	16	72	13	49	10	37,5	20	49	8	0,5
M120-000-01R	G3/4" RH	G3/4"	17,5	119	78	34,5	28	18	101	20	68	13	54	20	59	8	1,3



型 号	外 形 尺 寸																	kg				
	双通路																					
	A	B1	B2	C	D	E	F1	F2	G	H1	H2	I	L	M	N	P1	P2	R	S1	S2	T	
M120-002-11R	G1/4" RH	G1/2"	G1/4"	G1/4"	7	191	78	42	34,5	28	17	18	173	32	141	66	144	20	59	44	8	2



UK ROTOFLUX DOUBLE PASSAGES FOR HIGH PRESSURE AND LOW SPEED

CN 适用于高压低转速 双通路

耐压力 温度	Air 空气	Vacuum 真空	Oil 油	Water 水
	10 bar ⇨ 150 PSI	6,7 Kpa ⇨ 28" Hg	250 bar ⇨ 3.600 PSI	10 bar ⇨ 150 PSI
	120°C ⇨ 250°F	120°C ⇨ 250°F	120°C ⇨ 250°F	120°C ⇨ 250°F
转速				
	250	250	60 bar ⇨ 850 PSI ▶ 250 250 bar ⇨ 3.600 PSI ▶ 10	250

ROTOFLUX DOUBLE PASSAGES FOR HIGH PRESSURE AND LOW SPEED

2 PASSAGES, SIZE 3/8" AND 3/4"

The ROTOFLUX unions model M, thanks to the special design of the seals and the surface of the rotor ground, hardened and lapped may operate at high fluid pressure and low rotation speed with low friction and wear, for long time. Also they may remain inactive for long periods without seizing. They are available in three different versions:

- two straight through passages
- two 90° passages
- one 90° passage + one straight through passage

An antirotation pin is provided to prevent the rotation; stop it with a slack slot. To avoid contamination in case of leaks, it is necessary that one only type of fluid flows in both the two passages. Avoid to operate the union under pressure surges, and, at the max suggested operating limits, without consulting the ROTOFLUX customer service.

*在不与ROTOFLUX 客户服务部门协商的情况下, 不允许超过旋转接头的极限而使用。

*双通路3/8"-3/4", 此类型号旋转接头就用于高压、低转速的场合。

*以下三种形式可根据客户需要进行选择:

90° 通路 + 直式接口

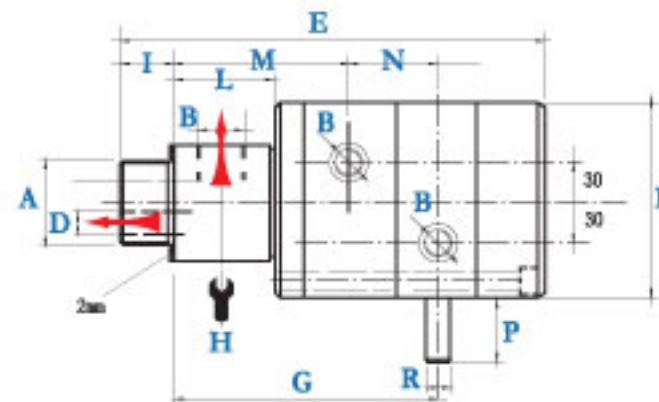
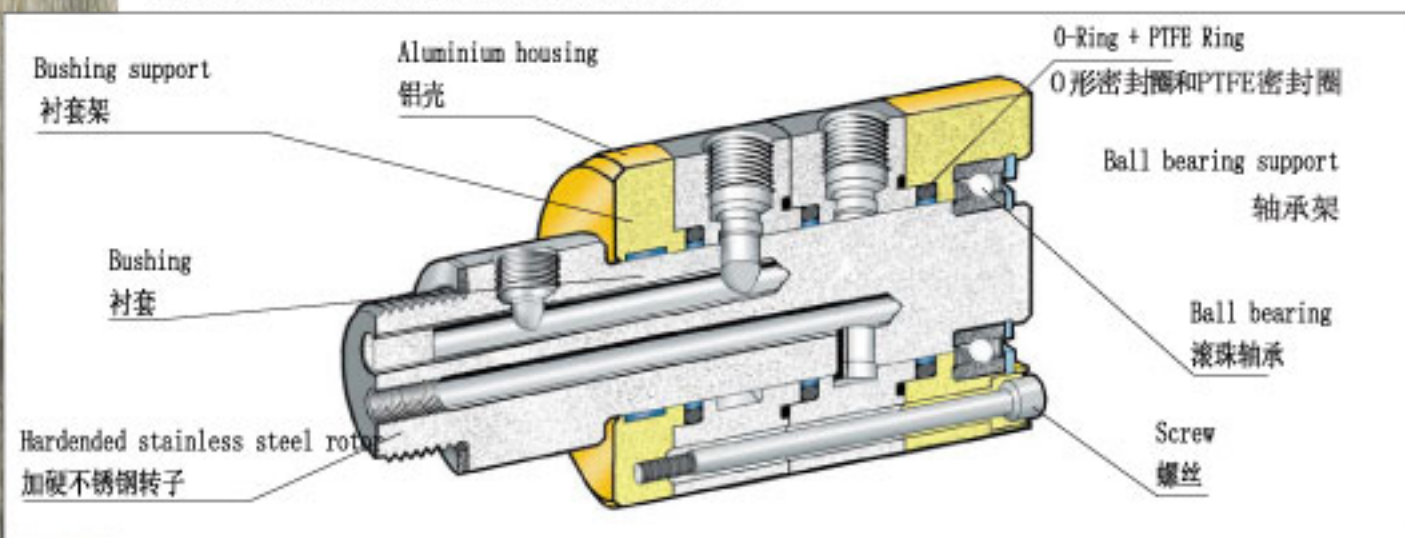
两个90° 接口

两个直式接口

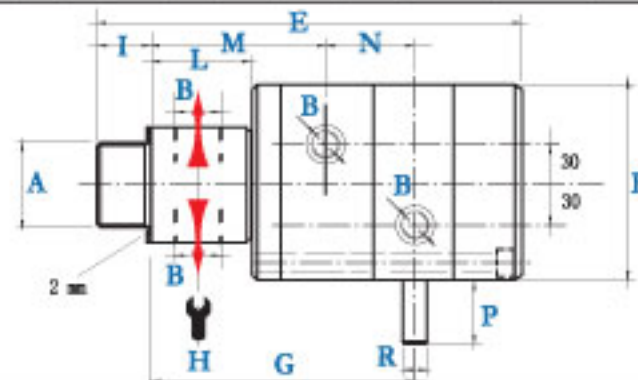
*其密封是通过径向的环形滑座和O形密封环组合来实现的。O形环提供静态密封。此结构所产生的摩擦力较小。此外, 要防止无转动的情况下长时间供给流体, 造成密封件损坏。

*转子由表面硬化并经研磨的不锈钢制成, 可承受轻微的摩擦和磨损。

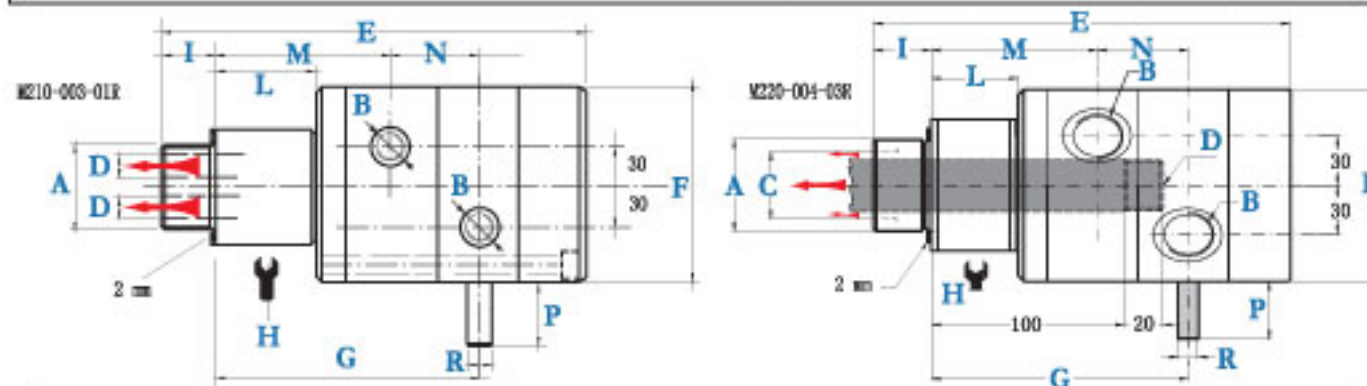
*壳体是由四部分组成, 被六支螺丝固定。此结构便于调节预紧力和零件维护。两个大的衬套通过长距离安装固定, 可保证稳定的同轴度和避免欠对准情形。



型号	外形尺寸													
	双通路													
	A	B	D	E	F	G	H	I	L	M	N	P	R	Kg
M210-000-01R	G 1" RH	G 3/8"	∅9	169	89	100	48	25	40	71,5	29	30	10	4,5
M220-000-05R	G 1 1/2" RH	G 3/4"	∅9	216	99	133	68	30	45	86	47	30	10	6,4



型号	外形尺寸													
	双通路													
	A	B	E	F	G	H	I	L	M	N	P	R	Kg	
M210-002-01R	G 1" RH	G 3/8"	169	89	100	48	25	40	71,5	29	30	10	4,5	
M220-002-01R	G 1 1/2" RH	G 3/4"	216	99	133	68	30	45	86	47	30	10	6,6	



型号	外形尺寸															
	双通路															
	A	B	C	D	E	F	G	H	I	L	M	N	O	P	R	Kg
M210-003-01R	G 1" RH	G 3/8"	-	G 1/8"	169	89	100	48	25	40	71,5	29	16	30	10	4,5
M220-004-03R	G 1 1/2" RH	G 3/4"	25	G 3/4"	216	99	133	68	30	45	86	47	-	30	10	5,6



UK ROTOFLUX FOUR AND SIX PASSAGES FOR HIGH PRESSURE AND LOW SPEED

CN 适用于高压力低转速 4和6通路

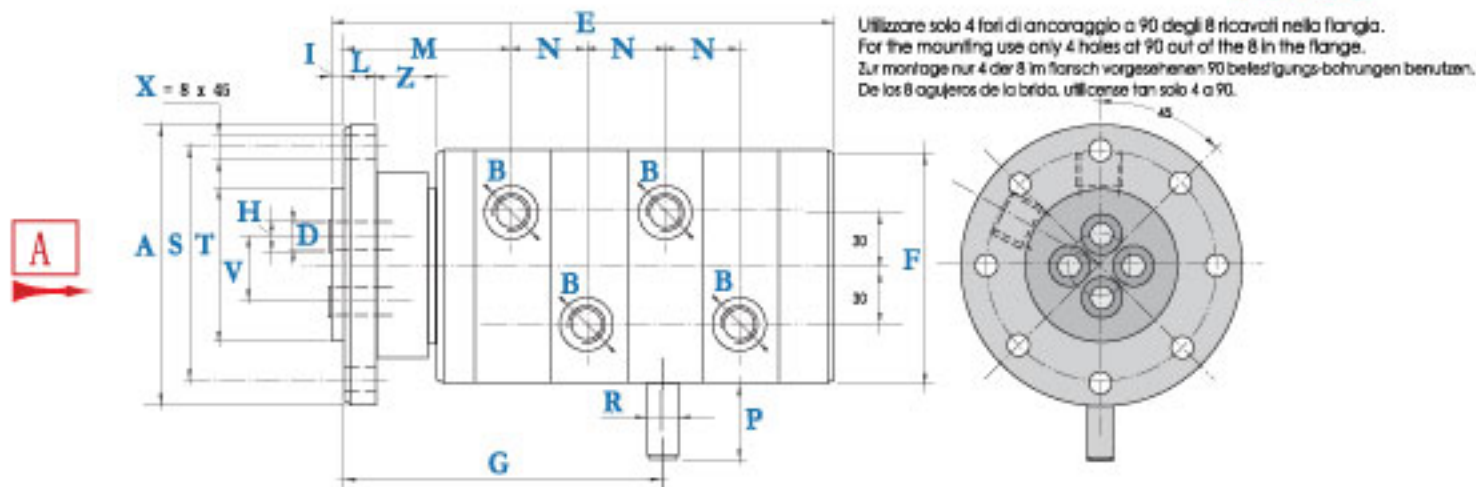
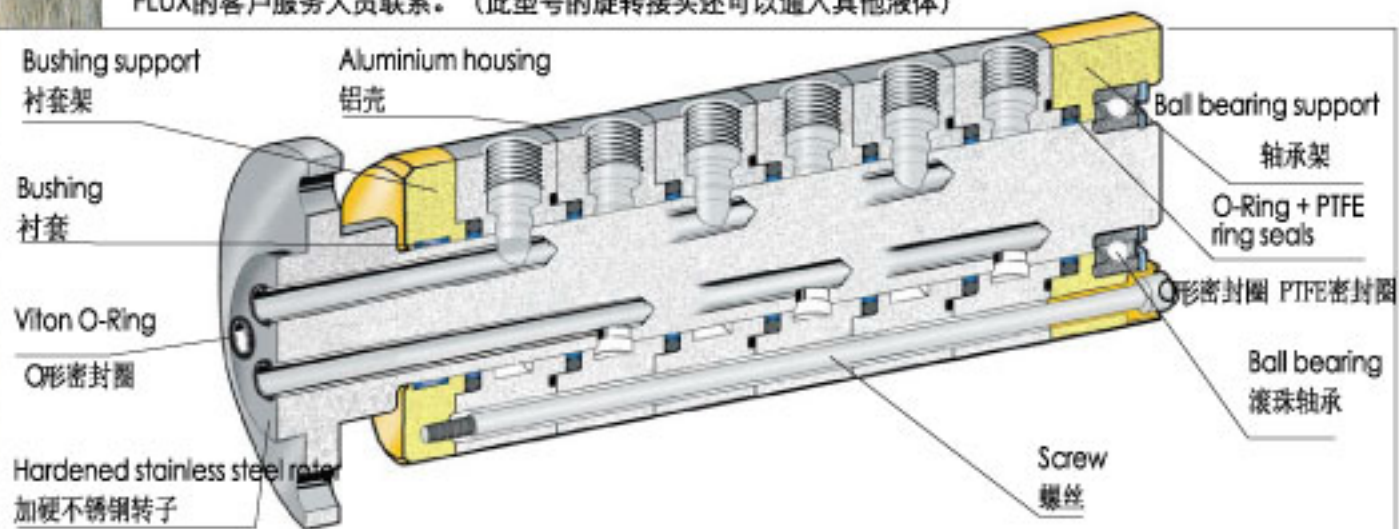
耐压力 温度	Air 空气	Vacuum 真空	Oil 油	Water 水
	10 bar ⇨ 150 PSI	6,7 Kpa ⇨ 28" Hg	250 bar ⇨ 3.600 PSI	10 bar ⇨ 150 PSI
	120°C ⇨ 250°F	120°C ⇨ 250°F	120°C ⇨ 250°F	120°C ⇨ 250°F
转速	250	250	60 bar ⇨ 850 PSI ▶ 250 250 bar ⇨ 3.600 PSI ▶ 10	250

ROTOFLUX FOUR AND SIX PASSAGES FOR HIGH PRESSURE AND LOW SPEED

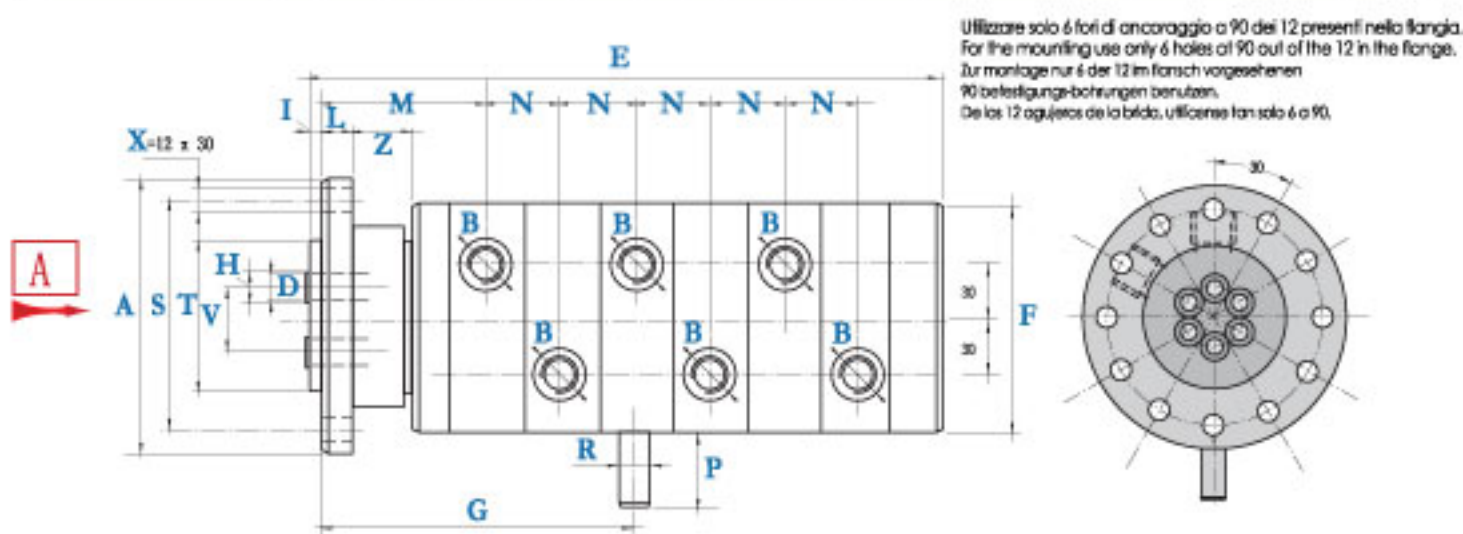
The ROTOFLUX unions model M, thanks to the special design of the seals and to the surface of the rotor in stainless steel hardened ground and lapped, may operate, for long time, with low friction and wear, at high fluid pressure and low rotation speed. Also they may remain inactive for long periods without seizing. An antirotation pin is provided to prevent the rotation. Stop it with a slack slot. To avoid contamination in case of leaks, it is necessary that one only type of fluid flows in all the passages.

Avoid to operate the union under pressure surges and at the max suggested operating limits without consulting the ROTOFLUX customer service.

- *在不与ROTOFLUX 客户服务部门协商的情况下, 不允许超过旋转接头的操作极限而运转。
- *由一个开槽的定位销防止端盖旋转, 而不是通过锁紧端部螺丝防止转动的。
- *此类型旋转接头应用于高压、低转速的场合。
- *其密封是通过径向的环形滑座和O形密封环组合来实现的。O形环提供静态密封。此结构的产生的摩擦力较小。此外, 要防止无转动的情况下长时间供给流体, 造成密封件损坏。
- *壳体是由八部分组成, 被六支螺丝固定。此结构便于调节预紧力和零件维护。两个大的衬套通过长距离安装固定, 可保证良好的同轴度和避免欠对准情形。
- *此类型是用于一种液体输入到四个通路中。如果需要在六个或四个通路中输入不同的液体, 请与ROTOFLUX的客户服务人员联系。(此型号的旋转接头还可以通入其他液体)

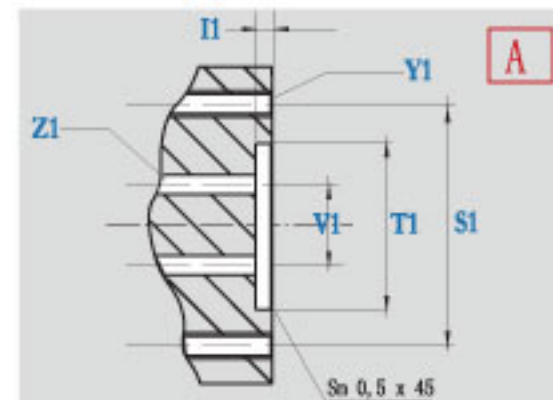


型号	外形尺寸 四通路																	
	A	B	D	E	F	G	H	I	L	M	N	P	R	S	T	V	Z	X
W110-000-03F	108	G/8"	9	200	89	122	16	5	12	64,5	29	30	10	90	60	24,5	21	8,5



型号	外形尺寸 六通路																	
	A	B	D	E	F	G	H	I	L	M	N	P	R	S	T	V	Z	X
W110-000-03F	108	G/8"	8	258	89	151,5	12,6	5	12	64,5	29	30	10	90	60	27	21	8,5

安装轴尺寸						
Ordering Code	II	S1	T1	V1	Y1	Z1
W110-000-03F	5	90	40,060 40,030	24,5	M8 4x90	ø 9 4x90
W110-000-03F	5	90	40,060 40,030	27	M8 6x60	ø 8 6x60





UK ROTOFLUX TWO, FOUR, SIX PASSAGES WITH A STRAIGHT CENTRE BORE

CN 适用于2, 4, 6通路, 带直中心孔

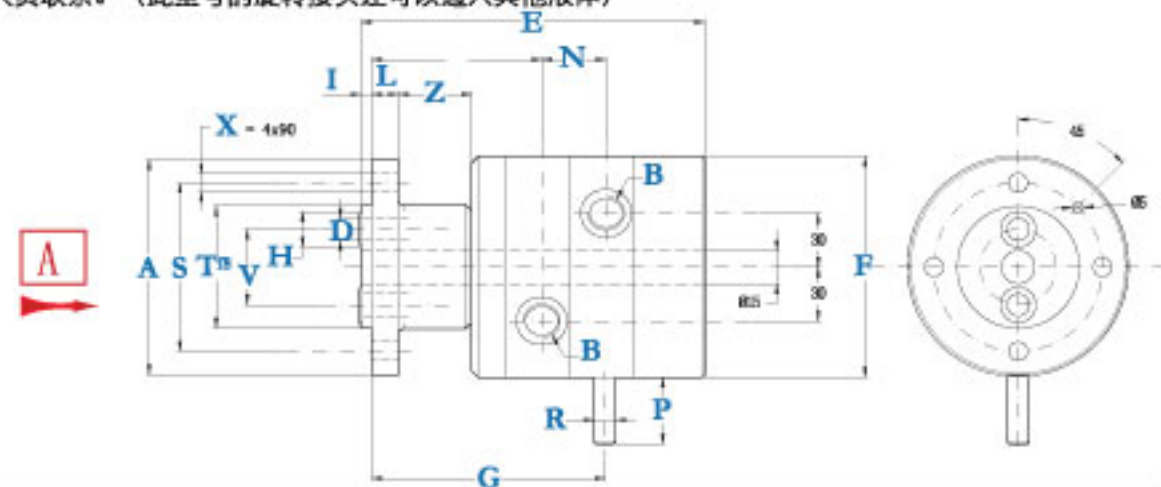
耐压力	Air	空气	Vacuum	真空	Oil	油	Water	水
温度	10 bar ⇨ 150 PSI		6,7 Kpa ⇨ 28" Hg		250 bar ⇨ 3.600 PSI		10 bar ⇨ 150 PSI	
	120°C ⇨ 250°F		120°C ⇨ 250°F		120°C ⇨ 250°F		120°C ⇨ 250°F	
转速	200		200		60 bar ⇨ 850 PSI ▶ 200 250 bar ⇨ 3.600 PSI ▶ 10		200	

ROTOFLUX TWO, FOUR, SIX PASSAGES WITH A STRAIGHT CENTRE BORE

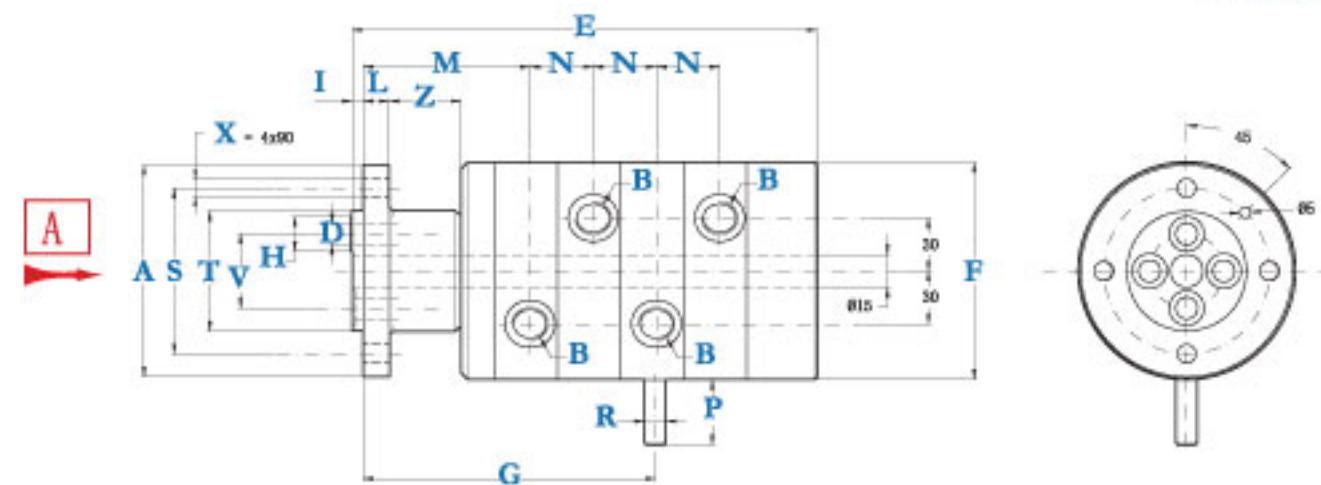
The ROTOFLUX union model M thanks to the special design of the seals and the surface of the rotor ground, hardened and lapped, may operate for long time, low friction and wear, at high fluid pressure and low rotation speed. Also they may remain inactive for long periods without seizing. An antirotation pin provide to prevent the rotation. Stop it with a slack slot. To avoid contamination in case of leaks, it is necessary that only one type of fluid flows in all passages. avoid to operate the union under pressure surges and at the max suggested operating limits without consulting the ROTOFLUX.

不允许在不与ROTOFLUX 客户服务部门协商的情况下, 超过旋转接头的操作极限而运转。

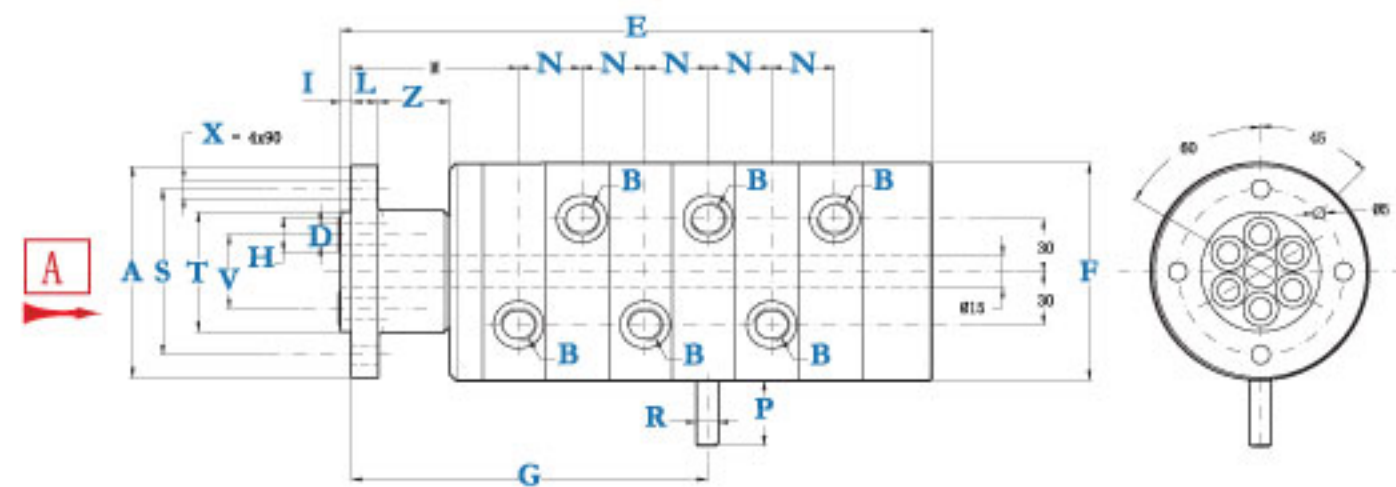
- * 由一个开槽的定位销防止端旋转, 而不是通过锁紧端部螺丝防止转动的。
- * 此类型号旋转接头应用于高压、低转速的场合。
- * 其密封是通过径向的环形滑座和O形密封环组合来实现的。O形环提供静态密封。此结构所产生的摩擦力较小。此外, 要防止无转动的情况下长时间供给流体, 造成密封件损坏。
- * 转子由表面硬化并经由研磨的不锈钢制成。可承受轻微的摩擦和磨损。
- * 壳体是由六部分组成, 被六支螺丝固定。此结构便于调节预紧力和零件维护。两个大的衬套通过长距离安装固定, 保证良好的同轴度和避免欠对准情形。
- * 此型号是用于一种液体输入到四个通路中, 如果需要在四个通路中输入不同的液体, 请与ROTOFLUX的客户服务人员联系。(此型号的旋转接头还可以通入其他液体)



型号	外形尺寸 双通路																		
	A	B	D	E	F	G	H	I	L	M	N	P	R	S	T ^h	V	Z	X	kg
M210-200-F15	97	G 3/8"	10	155	99	105	16	5	12	77	29	30	10	76	55	34	33	8,5	5,5

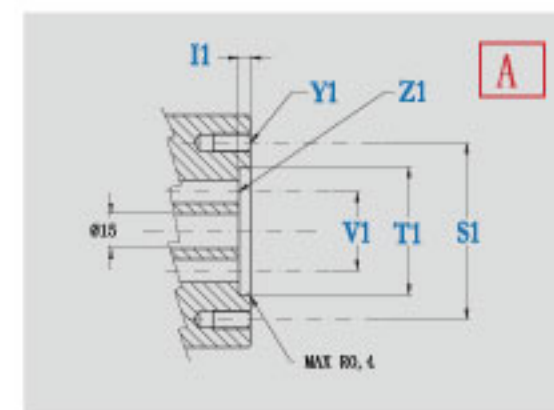


型号	外形尺寸 四通路																		
	A	B	D	E	F	G	H	I	L	M	N	P	R	S	T ^h	V	Z	X	kg
M410-200-F15	97	G 3/8"	10	213	99	134	16	5	12	77	29	30	10	76	55	34	33	8,5	7,5



型号	外形尺寸 六通路																		
	A	B	D	E	F	G	H	I	L	M	N	P	R	S	T ^h	V	Z	X	kg
M610-200-F15	97	G 3/8"	10	271	99	163	16	5	12	77	29	30	10	76	55	34	33	8,5	9,5

安装轴尺寸						
型号	H	S	T	V	Y	Z
M210-200-F15	5	76	55,095 55,000	34	M8 4x90	10 2X180
M410-200-F15	5	76	55,095 55,000	34	M8 4x90	10 4X90
M610-200-F15	5	76	55,095 55,000	34	M8 4x90	10 6X90





UK ROTOFLUX FIVE PASSAGES WITH A CENTER BORE

CN 适用于5通路 一个中心孔

耐压力 强度	Air	空气	Vacuum	真空	Oil	油	Water	水
		10 bar ⇒ 150 PSI		6,7 Kpa ⇒ 28" Hg		250 bar ⇒ 3.600 PSI		10 bar ⇒ 150 PSI
	120°C ⇒ 250°F		120°C ⇒ 250°F		120°C ⇒ 250°F		120°C ⇒ 250°F	
转速								
	80		80		60 bar ⇒ 850 PSI ▶ 80 250 bar ⇒ 3.600 PSI ▶ 10		80	

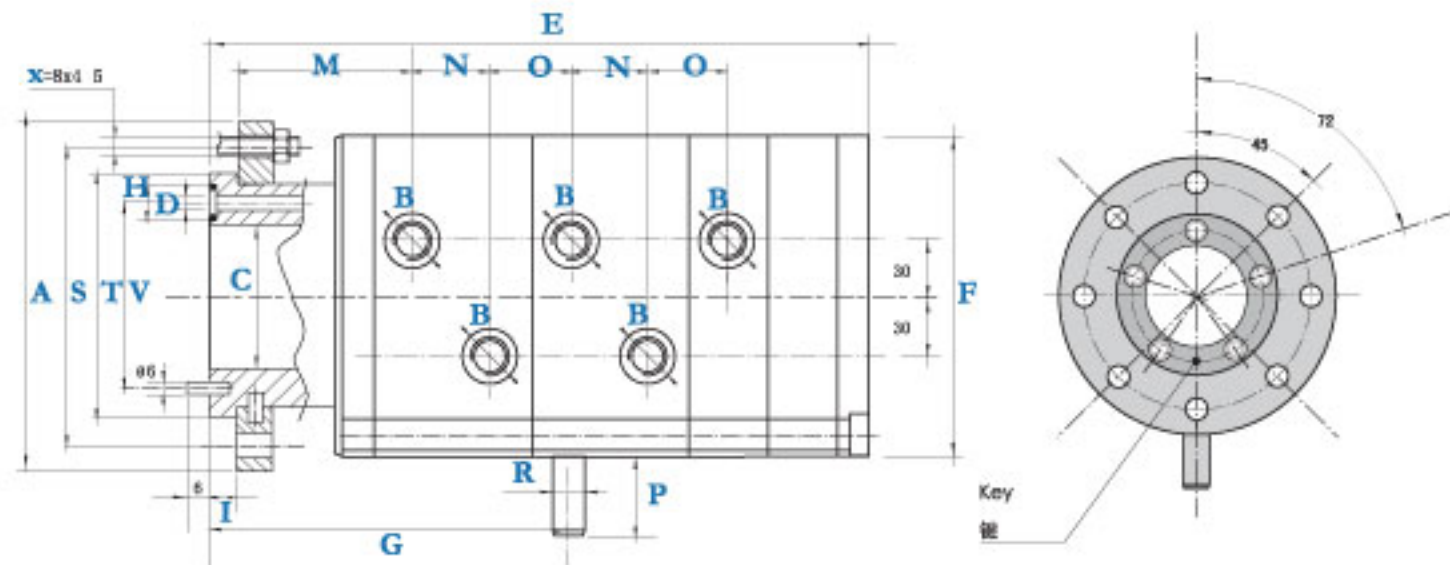
ROTOFLUX FIVE PASSAGES WITH A CENTER BORE

The ROTOFLUX unions model M, thanks to the special design of the seals and to the surface of the rotor in stainless steel, hardened, ground and lapped, may operate, for long time, with low friction and wear, at high fluid pressure and low rotation speed.

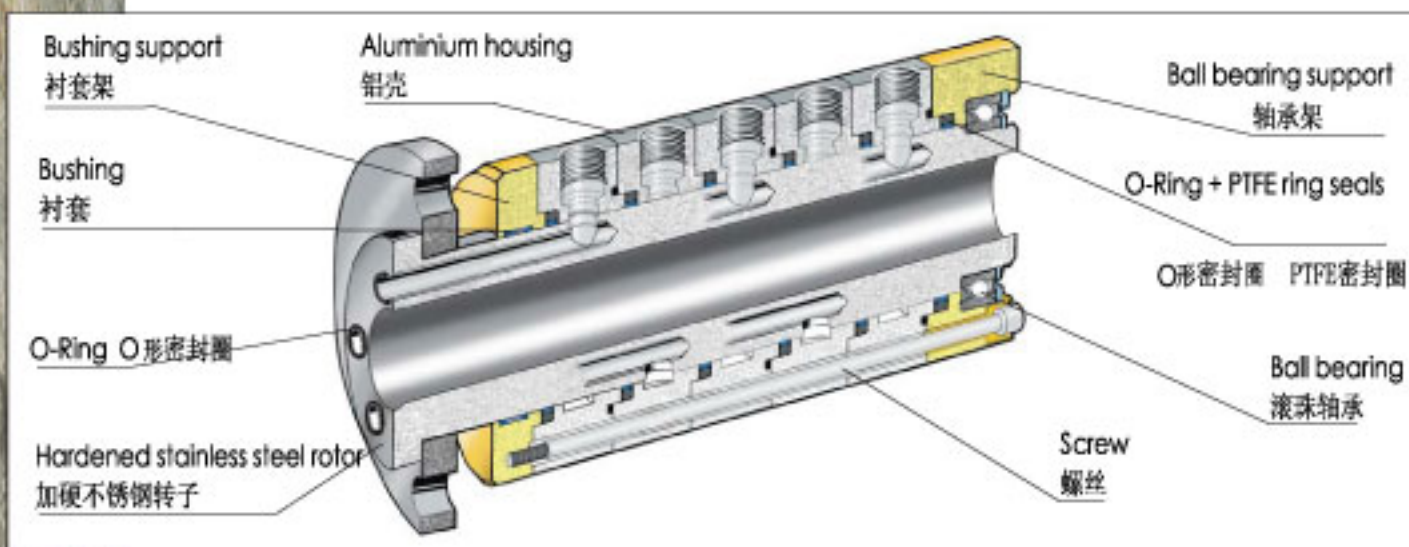
Also they may remain inactive for long periods without seizing. An antirotation pin is provided to prevent the rotation. Stop it with a slack slot. To avoid contamination in case of leaks, it is necessary that one only type of fluid flows in all the passages.

Avoid to operate the union under pressure surges and at the max suggested operating limits without consulting ROTOFLUX.

- *不允许在不与ROTOFLUX 客户服务部门协商的情况下，超过旋转接头的操作极限而运转。
- *由一个开槽的定位销防止端盖旋转，而不是通过锁紧端部螺丝防止转动的。
- *此类型旋转接头应用于高压力、低转速的场合。
- *其密封是通过径向的环形滑座和O形密封环组合来实现的。O形环提供静态密封。此结构的产生的摩擦力较小。此外，要防止无转动的情况下长时间供给流体，造成密封件损坏。
- *此类型是用于一种液体输入到五个通路中。如果需要在六个或五个通路中输入不同的液体，请与ROTOFLUX的客户服务人员联系。（此型号的旋转接头还可以通入其他液体）



型号	外形尺寸 五通路																		
	A	B	C	D	E	F	G	H	I	M	N	O	P	R	S	T ^Ø	V	X	Kg
M510-000-F80	195	G ^Ø	80	10	270	178	158	16	15	92	24	29	30	12	165	135	102	13	28



UNIONS INSTALLATION

Even if the ROTOFLUX unions are rugged and stout, they must be handled with care. For a proper installation we suggest to proceed as follows:

- Make sure that the fluid system, when new, has been properly cleaned and made free from any machining burr or abrasive particle. In existing fluid system make sure that the filter quality and functionality are in accordance with the normal requirements of hydraulic systems.
- Clamp in a bench vice the rear of the union and screw up the flexible hose (sketch 1). Do not use solid pipes.
- Install the rotary union on to the shaft (sketch 2).
- Connect the flexible hose to the supply line. Make sure that the union is not installed taut (sketch 3).
- When using metallic flexible hoses in short space with sharp curves, use rigid 45 or 90 elbows to avoid undue stresses (sketch 4).
- Check that the union does not rotate eccentric or wobbling.
- If the fluid is hot or dangerous for any reason, apply a union guard.
- When required, lubricate periodically the union.
- Inspect periodically the union to service it and detect any leakage.

WARRANTY

ROTOFLUX warrants that the products are free from any defect in material or workmanship. Unless expressly agreed in writing the liability of ROTOFLUX is limited to the replacement or repair of any proved defective union or part, returned to ROTOFLUX, transportation prepaid. The warranty is extended to 12 months from invoice date. There is not warranty of any kind extended beyond the limits as written above. ROTOFLUX will not be liable for any damage claimed as from the use of unions or parts which might be defective.

IMPORTANT

The use of ROTOFLUX unions with fluid, dangerous because flammable or corrosive or toxic or explosive, is strictly forbidden.

ROTOFLUX reserves the right to modify the catalog without any advise.

旋转接头的安装

尽管ROTOFLUX 系列旋转接头性能可靠，外形坚固，在安装时也必须遵循下面的安装步骤进行规范正确的安装：

- * 一定要在接好软管后，再将旋转接头装上主轴。
- * 可借助虎钳夹持住旋转接头本体，将软管连接上。
- * 不要采用刚性管子。
- * 将旋转接头安装在主轴末端。
- * 将软管连接到供应系统，确保旋转接头不受拉紧应力。
- * 当需要在狭小空间对软管进行大角度弯曲时，需采用45度或90度刚性接头，以防产生不必要的应力。
- * 检查并确保旋转接头在旋转过程中不要产生振动或摇晃。
- * 排泄管必须朝下，处于6点钟位置。

保固

ROTOFLUX 公司承担本产品材料或制作工艺方面的任何问题。确认属实有问题的产品或部件，公司承诺无偿更换或是维修并承担返修之运费。质保时间为自出货日起十二个月。若不属上述范围内或使用中可能形成的问题将不予以负责。

重点

ROTOFLUX 旋转接头通过的流体，严格禁止含有腐蚀性，有毒的，爆炸性的物质。避免发生意外危险。

